

A Publication of the
National Wildfire
Coordinating Group

National Interagency Incident Management System



Wildland Fire Qualification System Guide

PMS 310-1

September 2011

DRAFT

This page intentionally left blank.

DRAFT

**National Interagency
Incident Management System**

***Wildland Fire
Qualification System Guide***

PMS 310-1

Prepared by

**National Wildfire Coordinating Group
Operations and Workforce Development Committee**

September 2011

This document is at www.nwccg.gov.

This page intentionally left blank.

DRAFT

CONTENTS

| | |
|--|----|
| Introduction | 1 |
| NWCG Directives | 1 |
| How the PMS 310-1 Relates to the National Response Framework (NRF) | 1 |
| NWCG Compliance with NIMS Training | 2 |
| Skills Crosswalk for Structural and Wildland Firefighters | 2 |
| Position Competency and Behavior Guidance | 4 |
| Description of the Performance Based System | 5 |
| Certification and Recertification | 6 |
| Position Qualifications | 7 |
| Required Training | 7 |
| Recurrent Training | 7 |
| Annual Fireline Safety Refresher (RT-130) Training | 7 |
| Required Experience | 7 |
| Physical Fitness Levels..... | 8 |
| Currency Requirements | 9 |
| Other Training Which Supports Development of Knowledge and Skills..... | 9 |
| Wildfire Incident Complexity | 10 |
| Prescribed Fire Complexity | 10 |
| Nationally Mobilized Area Command, Type 1 and Type 2 Incident Management Teams ..10 | |
| Review and Update Process for the PMS 310-1 and Position Task Books | 11 |
| Position Task Book (PTB) Design and Use | 12 |
| Position Task Book Initiation | 12 |
| Position Task Book Completion Timeframes | 12 |
| Position Task Book Sections | 12 |
| Cover..... | 12 |
| Verification/Certification of Completed Task Book | 13 |
| Qualification Record | 13 |
| Evaluation Record | 14 |
| Position Task Book Responsibilities | 14 |
| The Home Unit/Agency | 14 |
| The Trainee | 15 |
| The Coach | 16 |
| The Training Specialist..... | 17 |
| The Evaluator..... | 17 |
| The Final Evaluator..... | 18 |

| | |
|---|---------|
| The Certifying Official..... | 18 |
| Position Task Book Considerations and Exceptions | 19 |
| Positions without NWCG Position Task Books | 19 |
| Positions with the Same Position Task Book for Type 2 and Type 1 Complexity Levels | 19 |
| Positions with Combined Position Task Books | 20 |
| Position Categories | 22 |
| Criteria for Position Consideration in the PMS 310-1 | 22 |
| Technical Specialists..... | 22 |
| Incident Command System (ICS) Positions | 23 |
| Wildland Fire Positions..... | 24 |
| Incident Support Positions | 25 |
| Associated Activities Positions | 25 |
| Position Qualification Sections | 27-157 |
| Command and General Staff..... | 27-47 |
| Operations | 49-72 |
| Air Operations..... | 74-89 |
| Planning | 91-109 |
| Logistics | 111-130 |
| Finance/Administration..... | 131-144 |
| Dispatch | 145-151 |
| Prevention & Investigation | 153-157 |
| Position Qualification Flow Charts | 159 |
| Area Command | 160 |
| Command and General Staff | 161 |
| Prescribed Fire | 162 |
| Operations | 163 |
| Air Operations..... | 164 |
| Planning | 165 |
| Logistics..... | 166 |
| Finance/Administration..... | 167 |
| Dispatch | 168 |
| Prevention & Investigation | 169 |

INTRODUCTION

The *National Interagency Incident Management System Wildland Fire Qualification System Guide, PMS 310-1*, developed under the sponsorship of the National Wildfire Coordinating Group (NWCG), is designed to:

1. Establish minimum requirements for training, experience, physical fitness level, and currency standards for wildland fire positions which all participating agencies have agreed to meet *for national mobilization*. Standards may be augmented to meet specific needs within an agency, but the augmentation cannot be imposed by an agency on its cooperators that meet the minimums outlined in this guide.
2. Allow cooperating agencies to jointly agree upon training, experience, physical fitness level, and currency standards to meet fire management needs for wildland fire (*wildland fire* includes wildfire and prescribed fire).
3. Establish minimum qualifications for personnel involved in prescribed fires on which resources of more than one agency are utilized—unless local agreements specify otherwise.

Any organization or agency providing resources to fill national interagency request for all types of wildland fire incidents will meet the minimum NWCG requirements described in this guide.

The NWCG recognizes the ability of cooperating agencies at the local level to jointly define and accept each other's qualifications for initial attack, extended attack, large fire operations, and prescribed fire.

NWCG DIRECTIVES

How the PMS 310-1 Relates to the National Response Framework (NRF)

The primary mission for the NWCG is wildland fire management. The guidance of the PMS 310-1 will help personnel maintain the skills necessary for success in all-hazard incidents and supports the preparedness elements of the NRF.

The NRF is a guide to how the nation conducts all hazard responses. It is built upon scalable, flexible, and adaptable coordinating structures to align key roles and responsibilities across the nation, linking all levels of government, nongovernmental organizations, and the private sector. Wildland fire agencies have the ability to make significant contributions to emergency management requirements—regardless of source. The *National Interagency Incident Management System Wildland Fire Qualification System Guide, PMS 310-1* is in compliance with and supports the ability of agency personnel to meet the requirements of the NRF and National Incident Management System (NIMS).

For more information on the Framework and related Annexes, go to <http://www.fema.gov/NRF>

National Wildfire Coordinating Group (NWCG) Compliance with National Incident Management System (NIMS) Training

According to the National Integration Center Incident Management Systems Integration Division, emergency management and response personnel already trained in the Incident Command System (ICS) using the National Interagency Incident Management System (NIIMS) ICS curriculum model do not need retraining if their previous training is consistent with the Department of Homeland Security (DHS) standard.

This would include (but not be restricted to) courses managed, administered, or delivered by the Emergency Management Institute, U.S. Fire Administration's National Fire Academy, National Wildfire Coordinating Group (NWCG), U.S. Department of Agriculture (USDA), Environmental Protection Agency (EPA), and the U.S. Coast Guard (USCG).

Homeland Security Presidential Directive (HSPD-5) requires training for all emergency responders to support the National Response Framework (NRF): for example, NIMS, An Introduction (IS-700), and NRF, An Introduction (IS-800B). NIMS training requirements will be attached to all positions identified in the PMS 310-1 and enforced in the Incident Qualification and Certification System (IQCS) for all Federal responders on June 1, 2012. Refer to agency specific direction for implementation in the interim period.

Skills Crosswalk for Structural and Wildland Firefighters

Overview

The Skills Crosswalk identifies critical wildland firefighting skills that structural firefighters need to be safe and effective in either of two situations: when making an initial attack on a wildland fire in their jurisdiction, or when working with state and federal wildland firefighter agencies.

The *Crosswalk* was developed by analyzing and comparing National Fire Protection Association (NFPA) structural firefighting standards with National Wildland Coordinating Group (NWCG) wildland firefighting Position Task Books. The resulting Crosswalk identifies wildland skills and knowledge not incorporated within standard structural firefighting training.

By incorporating a structural firefighter's existing fire suppression knowledge and skills, use of this *Crosswalk* reduces required classroom hours, minimizes curriculum redundancies, and makes efficient use of limited training hours. Coursework, practical demonstration of skills using NWCG Task Books (or other appropriate means), and the use of materials in resource kits assembled for each position have been incorporated into the *Crosswalk*.

Purpose of the Skills Crosswalk

In every area of the nation, rural development is expanding into wildland areas. Since the 1980s, the rural population has more than doubled, with 140 million people now living in rural areas.

As a result, rural and volunteer firefighters increasingly manage fire in the Wildland Urban Interface (WUI). This *Crosswalk* provides a performance-based methodology and a learning resource guide for qualified structural firefighters to develop wildland firefighting knowledge

and skills in a focused and time-efficient format. Structural firefighters with wildland skills work more safely and effectively on initial and extended attack operations. Cooperative firefighting efforts with neighboring jurisdictions and with federal wildland firefighters are enhanced.

The Crosswalk provides a standardized resource to guide local agencies in the development of training programs structured to meet needs of structural fire department personnel. By implementing the Crosswalk, wildland fire protection capacity and capability will be increased throughout the nation.

Authority Having Jurisdiction

The designated “Authority Having Jurisdiction” (AHJ) plays a primary role in the use and administration of the *Crosswalk*. The AHJ is defined by NFPA as *an organization, office, or individual responsible for enforcing the requirements of a code or standard, or for approving equipment, materials, installation, or a procedure.*

State and/or local law designate the AHJ for wildland fire protection within a given jurisdiction. Fire department chiefs, state fire marshals, state foresters, training officers, and other qualified fire protection officials are typically designated as the AHJ. The AHJ determines firefighter eligibility for *Crosswalk* use.

NWCG Positions Used for the Skills Crosswalk

Four specific NWCG positions are incorporated in the *Crosswalk*, each paired with a counterpart structural position, as shown below:

| Structural Fire Counterpart Position | Entering Qualifications | NWCG Position |
|---|---|-------------------------------------|
| Non-Supervisory Structural Firefighter, Basic | Meets NFPA standard 1001 for Firefighter 1 or equivalency | Firefighter Type 2 (FFT2) |
| Non-Supervisory Structural Firefighter, Advanced | Meets NFPA standard 1001 for Firefighter 2 or equivalency | Firefighter Type 1 (FFT1) |
| Driver/Operator/Engineer or Company Officer | Meets NFPA standard 1021 for fire officer or equivalency | Engine Boss, Single Resource (ENGB) |
| Experienced lieutenants, captains, chief officers | Meets NFPA standard 1021 for fire officer or equivalency | Strike Team Leader (STEN) |

For more information go to www.usfa.dhs.gov/fireservice/subjects/wildfire/.

POSITION COMPETENCY AND BEHAVIOR GUIDANCE

The U.S. Fire Administration (USFA) and the National Wildfire Coordinating Group (NWCG), working on behalf of the National Integration Center, Incident Management Systems Integration Division (Department of Homeland Security), identified and compiled a master list of the core competencies and behaviors for each ICS position identified in the National Incident Management System (NIMS). Using the master list of NWCG also identified competencies and behaviors for all remaining positions identified in the *NIIMS Wildland Fire Qualification System Guide, PMS 310-1*.

The competencies and behaviors form the basis for position specific training, position task books, job aids, and other performance-based documents.

The three primary benefits of identifying competencies:

- Competencies are a national “benchmark;” they standardize qualifications without interfering with local decision making about training;
- Shared competencies make interagency cross-over and collaboration easier;
- Competencies are a critical component for the development of performance based training.

The following brief definitions have been established:

- **Competency** – a broad description grouping core behaviors necessary to perform a specific function.
- **Behavior** – a general description of an observable activity or action demonstrated by an individual in a particular context.
- **Task** – A specific description of a unit of work activity that is a logical and necessary action in the performance of a behavior; how the behavior is demonstrated or performed in a particular context.

Competencies and behaviors across the ICS positions are similar. This similarity may hide critical differences in proficiency level and the environment or type of incident in which the position is expected to perform. These critical differences are typically captured in the task identified for each position.

Each all hazard discipline will determine which competencies and behaviors apply to positions identified within their discipline, and developing tasks to support the competencies and behaviors for each position. If a discipline wishes to deviate from these master competencies and behaviors they will be required to submit a change request to the Core Competency Management Working Group for adjudication and approval.

Approved competencies and behaviors by position can be found at <http://www.nwcg.gov/pms/taskbook/taskbook.htm>

DESCRIPTION OF THE PERFORMANCE BASED SYSTEM

In the performance based Wildland Fire Qualification System, qualification is based on completion of Required Training and demonstrated successful position performance by completing the applicable position task book on wildland fires, events, incidents, job activities, and in simulated exercises or classroom activities.

The primary criterion for qualification is individual performance as observed by an Evaluator. Evaluators must be either qualified in the position being evaluated or supervise the Trainee; Final Evaluators must be qualified in the Trainee position they are evaluating.

The successful performance must then be properly documented in an approved NWCG position task book (PTB). Position task books contain all critical tasks that are required to perform the job. The process of demonstrating the abilities to perform the position is the completion of a PTB. The tasks in each PTB have been established by subject matter experts from all NWCG agencies and geographical areas of the United States, and tested and approved by the NWCG.

NWCG PTBs must be used for Wildland Fire, Incident Support, and Associated Activities Position Categories. For Positions in the ICS category that do not have tasks specific to wildland fire, other all-hazard PTBs may be used as per agency direction.

Position task books are in a format which allows for documentation of a Trainee's ability to perform each task. Tasks pertaining to tactical decision-making and safety require position performance on a wildland fire. Remaining tasks may be evaluated through other means such as a simulation, or emergency or non-emergency incident/event.

The basis for recommending Agency Certification is successful completion of all required tasks of the position, as determined by the Evaluator(s) and Final Evaluator. Certification and documentation of completed PTBs is the responsibility of the Certifying Official from the Home Unit/Agency (this includes the employing agency when applicable).

Individuals are responsible for providing proof of qualification on an incident.

CERTIFICATION AND RECERTIFICATION

Agency certification and documentation of successful position performance (completion of the PTB) is the responsibility of the employing agency. This certification indicates the individual is qualified to perform in a specific position.

Each agency is responsible for annually certifying qualifications of its personnel based upon the requirements of this guide and agency specific requirements supplementing this guide. This responsibility includes evaluation of personnel for recertification in cases where position qualifications are no longer valid due to a lack of current experience.

Successful completion of position tasks and training courses does not guarantee an individual will be qualified to perform in a position. Certification and recertification is a subjective determination each individual agency must make based on task evaluations, position performance evaluations, and their own judgment of the quality of an individual's experience.

The quality of experience should be closely evaluated when making a determination for advancement to the next higher position, to a different position, or for recertification. The quality of experience may relate to the variety of fuel types in which an individual has performed, the size and complexity of the incident or event in terms of personnel, equipment, and operations, and the number of assignments.

While agency personnel can sign tasks in position task books as an Evaluator and/or Final Evaluator (which includes recommending a Trainee for certification where appropriate), agency personnel cannot function in the role of the Certifying Official for contractors—except where formal agreements are in place. Clauses in contracts are to include stipulations that specify the service provider must meet the standards found in this guide.

Casuals/emergency workers must meet hiring or certifying agency's requirements.

POSITION QUALIFICATIONS

Required Training

Required Training provides a direct link between training and job performance to provide for responder health and safe operations on wildland fires. Required Training cannot be challenged.

Note: The only exception to the PMS 310-1 Required Training is for structural firefighters using the Skills Crosswalk for qualification in FFT2, FFT1, ENGB and/or STEN. Those using the Skills Crosswalk must use the identified gap course material and obtain appropriate course certificates. Refer to the Skills Crosswalk for Structural and Wildland Firefighters section of the PMS 310-1 for further guidance.

Position task books (PTBs) can be initiated prior to attendance and successful completion of Required Training. However, Trainees cannot become fully qualified for the position until Required Training has been successfully completed. A Trainee must be qualified in the prerequisite position(s) before a PTB can be initiated.

Agency equivalent courses, and courses that are interchangeable as identified by the NWCG, Operations and Workforce Development Committee may be substituted for required courses. For information on interchangeable courses and course equivalency guidelines, see the *Field Manager's Course Guide*, PMS 901-1, available at <http://www.nwcg.gov/pms/training/training.htm>

Recurrent Training

In order to maintain currency, some positions have identified recurrent training (RT) at various intervals. For more information, consult the *Field Manager's Course Guide*, PMS 901-1.

Annual Fireline Safety Refresher (RT-130) Training

Attendance at an Annual Fireline Safety Refresher (RT-130) is required for designated positions in this guide in order to maintain currency, and for all personnel assigned to positions with fireline duties and for any position assigned to the fireline for non-suppression tasks.

Annual Fireline Safety Refresher (RT-130) training will focus on mandatory core content subjects and not on a minimum timeframe standard. The required number of hours is determined by the agency.

Core content is listed under Wildland Fire Safety Refresher Training at <http://www.nifc.gov/wfstar/index.htm>

Required Experience

Required Experience includes qualification in any prerequisite position and successful position performance through completion of the position task book. Required Experience cannot be challenged.

Physical Fitness Levels

Personnel must meet established physical fitness levels for wildland fire assignments. Agencies may determine the method of evaluating the physical fitness level of their personnel. However, the testing method should be a measurable evaluation process.

The physical fitness levels for some positions (for example, strike team leader) have been modified based on research completed by the Missoula Technology & Development Center (MTDC). For more information, see <http://fsweb.mtdc.wo.fs.fed.us/> (*intranet site for Forest Service and Bureau of Land Management*) or *internet site* www.fs.fed.us/t-d/ (*user name t-d, password t-d*).

Four levels of physical fitness have been established.

Arduous

Arduous – Duties involve fieldwork requiring physical performance calling for above-average endurance and superior conditioning. These duties may include an occasional demand for extraordinarily strenuous activities in emergencies under adverse environmental conditions and over extended periods of time. Requirements include running, walking, climbing, jumping, twisting, bending and lifting more than 50 pounds; the pace of work typically is set by the emergency situation.

Moderate

Moderate – Duties involve fieldwork requiring complete control of all physical faculties and may include considerable walking over irregular ground, standing for long periods of time, lifting 25 to 50 pounds, climbing, bending, stooping, squatting, twisting and reaching. Occasional demands may be required for moderately strenuous activities in emergencies over long periods of time. Individuals usually set their own work pace.

Light

Light – Duties mainly involve office type work with occasional field activity characterized by light physical exertion requiring basic good health. Activities may include climbing stairs, standing, operating a vehicle and long hours of work, as well as some bending, stooping, or light lifting. Individuals can usually govern the extent and pace of their physical activity.

None Required

None Required – Positions that do not require a physical fitness level.

For any position assigned to the fireline for non-suppression tasks, the required physical fitness level shall be “Light.”

Currency Requirements

For the positions identified in this guide, the maximum time allowed for maintaining currency is three (3) years for air operations and dispatch positions and five (5) years for all others.

Currency for a position can be maintained by successful performance in the position qualified for within the given timeframe, or successful performance in positions identified in this guide.

Other Training Which Supports Development of Knowledge and Skills

Personnel are not required to complete NWCG courses referenced under “Other Training Which Supports Development of Knowledge and Skills” in order to qualify for an NWCG position— unless specific agency policy dictates otherwise.

Personnel may learn skills from other sources (structural fire, law enforcement, search and rescue, or other agency specific training programs), rather than through actual performance on a wildland fire or in NWCG curricula.

Although training referenced here is not “required,” the training provided in the identified courses or Job Aids, or knowledge and skills acquired through on-the-job training, work experience, or training determined by one’s agency, is a primary means by which personnel can prepare for position performance evaluation by obtaining specific knowledge and skills required to perform tasks identified in the PTB.

For more information on training courses, Job Aids, curriculum history, and course revision schedule, refer to the NWCG Training and Qualifications website at <http://training.nwcg.gov>. The *Field Manager’s Course Guide*, PMS 901-1, at <http://www.nwcg.gov/pms/training/training.htm> is the authoritative reference for all courses within the NWCG curriculum.

WILDFIRE INCIDENT COMPLEXITY

The agency administrator or designated representative must determine the complexity of an incident and assign qualified personnel as needed. In situations where multiple agencies and jurisdictions are involved, the determination of complexity and qualifications should be made jointly.

There are many factors that determine incident complexity: size, location, threat to life and property, political sensitivity, organizational complexity, jurisdictional boundaries, values to be protected, fuel type, topography, agency policy, etc. For more specific guidance on determining types of complexity, refer to the *Fireline Handbook*, PMS 410-1, and the *Incident Response Pocket Guide*, PMS 461. Both documents are at <http://www.nwccg.gov/pms/pubs/pubs.htm>.

PRESCRIBED FIRE COMPLEXITY

Agencies can develop their own specific prescribed fire complexity determination procedures. The *Prescribed Fire Complexity Guide*, PMS 424, is an aid for use in this process. This document is at <http://www.nwccg.gov/pms/RxFire/rxfire.htm>.

NATIONALLY MOBILIZED AREA COMMAND, TYPE 1 AND TYPE 2 INCIDENT MANAGEMENT TEAMS

To become eligible for participation on an Area Command Team, any person filling a team position must successfully complete Area Command (S-620).

To become eligible for participation on a National Type 1 Incident Management Team, any person filling a team position as the Incident Commander, Safety Officer, Information Officer or General Staff must successfully complete Advanced Incident Management (S-520) or Complex Incident Management Course (CIMC) as per agency direction.

To become eligible for participation on a Type 2 Incident Management Team, any person filling a team position as the Incident Commander, Safety Officer, Information Officer or General Staff must successfully complete Command and General Staff (S-420).

An individual, having successfully completed the S-420, S-520 or CIMC, or S-620 course, does not need to reattend for the purpose of changing functions on a team at the appropriate level—such changes will be governed by meeting the requirements of the applicable position task book and receiving agency certification.

REVIEW AND UPDATE PROCESS FOR THE PMS 310-1 AND POSITION TASK BOOKS

PMS 310-1

A formal revision of the PMS 310-1 will occur on an annual basis. However, the Operations and Workforce Development Committee (OWDC) may review proposals, address issues, and make changes at any time as needs dictate. All NWCG members will be requested to review and provide input for the proposed revision prior to the revision being adopted by NWCG.

Revision Process

1. Proposed changes to the PMS 310-1 will be identified as an attachment to the “Request for Change” document available online at:
http://www.nwcg.gov/branches/pre/owdc/form_requestforchange.htm
Required information includes reason for the change, a draft Position Task Book (if appropriate), and a transition plan for individuals currently residing in Incident Qualification and Certification System (IQCS) and the Incident Qualification System (IQS).
2. This package will be reviewed by OWDC and vetted through other branches/committees to assess any other impacts and gain approval.
3. If the proposed change is approved, the requesting party will be notified through official correspondence of the acceptance and the time frame for implementation.
4. Updates to the PMS 310-1 will be made in IQS and IQCS on an annual basis. Exceptions are critical health and safety issues that need to be addressed immediately.

Position Task Books (PTBs)

Comments and proposals on PTBs and the qualification process must be submitted through the appropriate agency official or geographic area coordination group (GACG) to the Operations and Workforce Development Committee (OWDC).

The OWDC may review PTB and qualification proposals and address issues at any time. The OWDC will consult with NWCG working teams and subject matter experts as appropriate, and recommend adoption or rejection by the NWCG.

Position task books, which may be developed for positions not identified within the PMS 310-1, must be submitted to the OWDC for review and approval as NWCG positions.

Information on updates to the PMS 310-1, decisions affecting new positions, changes in qualifications, and new, revised, and approved position task books is available on the NWCG website at <http://www.nwcg.gov>.

POSITION TASK BOOK (PTB) DESIGN AND USE

Position task books are designed primarily for the evaluation of individual performance or as a checklist for recertification, but they may also be used as a basis for on-the-job training.

Position Task Book Initiation

A Trainee must be qualified in any prerequisite position before the next level PTB can be initiated. A Trainee cannot be assigned to an incident unless they are designated as a Trainee on their Incident Qualification Card or other agency proof of certification.

Position Task Book Completion Timeframes

As of the publication date, the standards established in this edition of PMS 310-1 will be met by all participating agencies. Individuals who have begun the process of qualifying for a position under previous editions can continue to use those standards as long as they complete the process prior to the expiration deadlines of the PTB.

Any individual who has begun the evaluation process need not take any newly required course(s) for that position. Additionally, personnel who are qualified in a position prior to the implementation of this revision may retain certification at the discretion of their agency. To qualify in any other position, the individual must meet the standards identified herein.

Position task books have a limited time in which they can be completed:

A PTB is valid for three years from the day it is initiated. Upon documentation of the first task in the PTB, the three-year time limit is reset from that new date.

If the PTB is not completed in three years from the date of the PTB initiation (or first task being evaluated) the PTB will no longer be valid. A new PTB may be initiated, but all current qualification standards will then apply.

Position Task Book Sections

Accurate completion of PTBs is important to the qualification process. The introductory information in each PTB provides a brief description of how the PTB is to be used.

Cover

The **Cover** includes the title of the position(s) and, if applicable, states that a “wildfire” or “prescribed fire” assignment is required prior to certification.

The cover also contains a block that includes information about the individual (Trainee), the person initiating the PTB, and the date it was initiated. The Home Unit/Agency or Training Specialist (TNSP)—with approval from the Home Unit/Agency—will enter this information.

Verification/Certification of Completed Task Book

The **Verification/Certification of Completed Task Book** provides a record of the Final Evaluator's recommendation and agency certification. The Final Evaluator will complete the verification section recommending certification and the Certifying Official at the Home Unit/Agency, when appropriate, will complete the certification.

Qualification Record

The **Qualification Record** includes:

The left column with a list of **TASKS** that must be performed. If a specific standard (quality or quantity) is required, it will be specified in the task. Tasks within the PTB are numbered sequentially; however, the numbering does NOT indicate the order in which the tasks need to be performed or evaluated.

The bullets under each numbered task are examples or indicators of items or actions related to the task. The purpose of the bullets is to assist the Evaluator in evaluating the Trainee; the bullets are not all-inclusive. Evaluate and initial ONLY the tasks. DO NOT evaluate and initial each individual bullet.

The column labeled **CODE** will contain a code that specifies the type of situation in which the task must be completed.

Tasks labeled with an **“O”** can be completed in any situation (classroom, simulation, daily job, incident, prescribed fire, etc.) Assignment to an incident is not required.

For example, an administrative officer, as a part of their regular job, may perform many of the tasks associated with a finance/administrative position for which they have been identified as a Trainee. In this case, an Evaluator may observe and document performance of the **“O”** task in the regular job setting.

Tasks labeled with an **“I” (incident)** must be performed on an incident that is managed under the Incident Command System (ICS). Types of incidents include wildland fire, structural fire, search and rescue, hazardous material, oil spill, an emergency or non-emergency (planned or unplanned) event.

Tasks labeled **“W”** must be performed on a wildfire incident.

Tasks labeled **“RX” (prescribed fire)** must be performed on a prescribed fire incident.

Tasks labeled **“W/RX” (wildfire/prescribed fire)** must be performed on a wildfire or prescribed fire incident.

Tasks labeled “**R**” (**rare event**) such as accidents, injuries, vehicle or aircraft crashes occur infrequently and opportunities to evaluate performance in a real setting are limited. The Evaluator should determine, through interview, if the Trainee would be able to perform the task in a real situation.

The column labeled “**Evaluation Record #**” refers to the numbered evaluation records at the end of the PTB. Each Evaluator will complete an Evaluation Record and enter the number of that record to reference completed tasks.

The right-hand column labeled “**Evaluator**” provides space for the Evaluator to initial and date when the task is completed. All tasks must be completed, initialed and dated before the Trainee can be recommended for certification in the position.

Evaluation Record

The **Evaluation Record** (two pages at the end of the PTB) is for recording information about the type and complexity of the incident on which the evaluation was made and the recommendations of the Evaluator. Additional copies of the Evaluation Record can be downloaded at www.nwcg.gov/pms/taskbook/taskbook.htm.

Position Task Book Responsibilities

Documentation of training, experience, and the qualification process is the responsibility of the Home Unit/Agency. Documentation of training, experience, and the qualification process for contractors and their employees is the responsibility of the contractor, except where formal agreements are in place.

Home Unit/Agency

The **Home Unit/Agency** is the designated agency that employs the individual. This could be at the local, state, regional, or national level. The Certifying Official from the Home Unit/Agency has administrative authorization to manage the qualification system for that Home Unit/Agency (see Certifying Official).

It is the responsibility of the Home Unit/Agency to:

Select Trainees, based upon the needs of the Home Unit/Agency and agreements with cooperators.

Ensure individuals selected as Trainees are qualified in any prerequisite position.

Example: A Trainee selected for the position of Crew Boss, Single Resource (CRWB) must have documented, satisfactory performance as a Firefighter Type 1 (FFT1).

Initiate and explain the purpose and proper use of the PTB, and the training, qualification and certification process. Position task books can only be initiated by either the Home Unit/Agency or a Training Specialist on an incident (with approval from the Home Unit/Agency).

Ensure the Trainee has the opportunity to acquire the knowledge/skills necessary to perform the position. This includes completion of required training courses and on-the-job training assignments.

Provide opportunities for non-incident (“O”) task evaluation.

Track the progress of the Trainee.

Ensure that the Trainee successfully completes any Required Training prior to being recommended for certification by a Final Evaluator.

Issue proof of certification as required by PMS 310-1. This proof is normally an incident qualification card.

Trainee

The Trainee is the individual, approved by their agency, who is preparing to qualify for a position. The Trainee is eligible for formal, on-the-job training.

It is the responsibility of the Trainee to:

Review and understand the instructions in the PTB.

Meet with the Evaluator and/or Coach and identify desired goals and objectives for an assignment.

Ensure readiness to perform the tasks of the position prior to undertaking a position performance assignment. This includes acquiring the knowledge and skills needed to perform the job tasks. On-the-job training assignments may assist in acquiring knowledge and skills.

Provide background information (training and experience) to the Evaluator and/or Coach.

Complete the PTB within the three-year time limit. If the PTB is not completed in three years from the date of the PTB initiation (or first task being evaluated), the PTB will no longer be valid. A new PTB may be initiated, but all current qualification standards will then apply.

Ensure an Evaluator completes the Evaluation Record, initials completed tasks, and enters a number in the Evaluation Record # column.

Provide a copy of the completed PTB to the Home Unit/Agency.

Retain the original PTB. This is extremely important, as the PTB is the only record of task performance. A lost or destroyed PTB may require additional position performance assignments.

Successfully complete any Required Training prior to being recommended for certification by a Final Evaluator.

Provide proof of qualifications on an incident.

Coach

The Coach provides instruction to a Trainee. This may be in the classroom, on-the-job, or on an incident. While many of the requirements of the Coach are similar to those of an Evaluator, the roles of coaching and evaluating must remain separate:

For example, a Coach may be instructing a Trainee in pump operation tasks. When the Trainee appears to have mastered the tasks, the Coach can become the Evaluator and observe and record performance of the task. It is similar to instructing in the classroom and administering a test. The two functions are separate. They can be performed in sequence, but not at the same time.

It is the responsibility of the Coach to:

Be qualified in the position or supervise the Trainee.

Meet with the Trainee and determine past experience and training, current qualifications, desired goals and objectives of the assignment.

Note: If a Coach determines that the Trainee does not meet the prerequisite Required Experience or does not have the knowledge/skills to perform the tasks of the position, then the position performance assignment must not continue. The Coach can provide on-the-job training and then recommend a position performance assignment at a later time during the same incident.

Review the tasks in the PTB with the Trainee and explain the procedures that will be used in the training assignment and the objectives that should be met during the assignment.

Reach agreement with the Trainee on the specific tasks that can be performed during the assignment.

Document training assignment according to Home Unit/Agency procedures.

Training Specialist

The Training Specialist can be an individual from the Home Unit/Agency who is responsible for training and qualifications, or an NWCG qualified Training Specialist (TNSP) on an incident/event.

It is the responsibility of the Training Specialist to:

Meet with the Trainee and determine the type of assignment necessary (position performance assignment or on-the-job training). Consider past experience and training, current qualifications, desired goals and objectives of the assignment.

Note: If the Trainee does not meet the prerequisite Required Experience for the position or does not have the knowledge/skills to perform the tasks of the position, then the position performance assignment must not continue. If the individual meets the prerequisites but does not have the necessary knowledge/skill, it may be possible to provide on-the-job training and reinstate the performance assignment at a later time during the same incident.

Identify opportunities for on-the-job training and position performance assignments that meet the Trainee's needs and objectives.

Work with the Home Unit/Agency or appropriate personnel on the incident to identify and assign qualified Evaluators.

Initiate a PTB ONLY after obtaining approval from the Trainee's Home Unit/Agency.

Document all on-the-job training and position performance assignments.

Conduct periodic progress reviews to ensure assignments are proceeding as planned.

Conduct a closeout interview with the Trainee and Evaluator to ensure that the PTB has been properly completed.

Evaluator

The Evaluator is the person who actually observes the task(s) being performed and documents successful performance in the PTB. The Evaluator and the Coach may be the same person; however, the functions of coaching and evaluating must remain separate (see Coach).

It is the responsibility of the Evaluator to:

Be qualified in the position being evaluated or supervise the Trainee. If the Evaluator supervises the Trainee, but is not qualified in the position, the Evaluator can sign tasks, but cannot function as the Final Evaluator.

Meet with the Trainee and determine past experience and training, current qualifications, desired goals and objectives of the assignment.

Note: If an Evaluator determines the Trainee does not meet the prerequisite Required Experience or does not have the knowledge/skills to perform the tasks of the position, then the position performance assignment must not continue. At the discretion of the Evaluator, and if the individual meets the prerequisite Required Experience, it may be possible to provide on-the-job training and reinstate the Trainee into the position performance assignment at a later time during the same incident.

Review the tasks in the PTB with the Trainee and explain the procedures that will be used in the evaluation and the objectives that should be met during the assignment.

Reach agreement with the Trainee on the specific tasks that can be performed and evaluated during the assignment.

Accurately evaluate and record the demonstrated performance of tasks. This is the Evaluator's most important responsibility; it provides for the integrity of the performance based qualification system.

Complete the appropriate Evaluation Record in the back of the PTB. If more than one position performance assignment is necessary, the Evaluator will complete an Evaluation Record for each assignment.

Final Evaluator

While Evaluators must be either qualified (meaning qualified with currency) in the position being evaluated or supervise the Trainee, a Final Evaluator must be qualified in the Trainee position they are evaluating.

Only the Evaluator on the final position performance assignment (the assignment in which all remaining tasks have been evaluated and initialed) will complete the Final Evaluator's Verification statement inside the front cover of the PTB recommending certification.

Certifying Official

The Certifying Official from the Home Unit/Agency must review and confirm the completion of the PTB and make a determination of agency certification. This determination should be based on the Trainee's demonstration of position competencies and behaviors, as well as the completed PTB—which includes a Final Evaluator's Verification. Only the Certifying Official from the Home Unit/Agency has the authority to certify an individual's qualifications.

POSITION TASK BOOK CONSIDERATIONS AND EXCEPTIONS

Positions without NWCG Position Task Books

Individuals in the following positions perform tasks that vary depending on the agency and/or the assignment. Assignment and qualification will be determined by the agency.

Agency Representative (AREP)
Air Tanker/Fixed Wing Coordinator (ATCO)
Interagency Resource Representative (IARR)
Operations Branch Director (OPBD)
Service Branch Director (SVBD)
Support Branch Director (SUBD)

Positions with the Same Position Task Book for the Type 2 and Type 1 Complexity Levels

Finance/Administration Section Chief Type 2 & Type 1 (FSC2 & FSC1)
Helibase Manager Type 2 & Type 1 (HEB2 & HEB1)
Incident Business Advisor Type 2 & Type 1 (IBA2 & IBA1)
Incident Commander Type 2 & Type 1 (ICT2 & ICT1)
Logistics Section Chief Type 2 & Type 1 (LSC2 & LSC1)
Operations Section Chief Type 2 & Type 1 (OSC2 & OSC1)
Planning Section Chief Type 2 & Type 1 (PSC2 & PSC1)
Prescribed Fire Burn Boss Type 2 & Type 1 (RXB2 & RXB1)
Prescribed Fire Manager Type 2 & Type 1 (RXM2 & RXM1)
Public Information Officer Type 2 & Type 1 (PIO2 & PIO1)
Safety Officer Type 2 & Type 1 (SOF2 & SOF1)

For positions having the same PTB, Trainees are required to complete an initiated PTB for each complexity level. When the PTB is initiated, the applicable level should be identified by crossing out the nonapplicable position identifiers on the PTB cover.

Example: A Trainee completes a PTB for Incident Commander Type 2 (ICT2) and receives certification from the Home Unit/Agency in that position. When the Home Unit/Agency determines the individual has demonstrated satisfactory position performance as an ICT2, a new Incident Commander Type 2 & Type 1 (ICT2&1) PTB may be initiated for ICT1. Crossing out ICT2 on the cover indicates the Trainee is working to complete the ICT1 Position Task Book.

Positions with Combined Position Task Books (PTBs)

Some NWCG PTBs have been combined; *however, the positions referenced on the PTBs have not been combined. For additional information refer to Individual Position Qualification pages in the PMS 310-1 or the position task book.*

Combined PTBs with Common Tasks:

1. Single Resource Boss: (CRWB, HEQB, ENGB, FELB, FIRB, and HMGB)
2. Helicopter Coordinator & Air Tactical Group Supervisor (HLCO & ATGS)
3. Resource Unit Leader, Situation Unit Leader & Demobilization Unit Leader (RESL, SITL & DMOB)
4. Facilities Unit Leader, Communications Unit Leader, Food Unit Leader, Ground Support Unit Leader, Medical Unit Leader & Supply Unit Leader (FACL, COML, FDUL, GSUL, MEDL & SPUL)
5. Compensation/Claims Unit Leader, Procurement Unit Leader, Time Unit Leader (COMP, PROC & TIME)
6. Personnel Time Recorder, Compensation-for-Injury Specialist, Claims Manager, Equipment Time Recorder, & Commissary Manager (PTRC, INJR, CLMS, EQTR, & CMSY)

These PTBs have been combined to include common tasks—with additional tasks for specific positions as referenced. The common tasks only need to be completed once. When the PTB is initiated, the applicable position(s) should be identified by crossing out the nonapplicable positions on the cover.

For each subsequent position, a new Front Cover Initiation page and a new Verification/Certification page must be printed and initiated (with the applicable position being identified by crossing out the nonapplicable positions on the cover). The Required Experience for RESL must be met prior to completing additional DMOB tasks.

Firefighter Type 1 (FFT1) and Incident Commander Type 5 (ICT5)

The FFT1 tasks only need to be completed once; the additional tasks specific to ICT5 must be completed to obtain ICT5 qualification. The FFT1 and ICT5 PTBs can be initiated at the same time; the tasks can be completed simultaneously. A Verification/Certification page is included in the PTB for each position.

Strike Team Leader (STCR, STEN, STEQ) and Task Force Leader (TFLD)

For qualification as a Strike Team Leader, the specific Strike Team Leader PTB must be initiated (with the applicable position being identified by crossing out the nonapplicable positions on the cover). The Strike Team Leader tasks only need to be completed once. Once qualified as a Strike Team Leader, any additional Single Resource Boss qualifications will allow agencies to qualify the individual in the corresponding Strike Team Leader position. An additional PTB for that position does not need to be completed. Certification must be documented on a Verification/Certification page.

Once qualified as a Strike Team Leader, to become a TFLD a new Front Cover Initiation page and a new Verification/Certification page must be printed and initiated (with the applicable

position being identified by crossing out the nonapplicable positions on the cover) and the additional tasks in the PTB for TFLD must be completed.

For an individual utilizing the alternate pathway of two Single Resource Boss + ICT4, a TFLD PTB must be initiated (with the applicable position being identified by crossing out the nonapplicable positions on the cover) and all tasks in the PTB must be accomplished and evaluated.

Note: If a TFLD meets the prerequisite experience and qualifications of a STL, the appropriate STL qualification may be granted by the certifying official. Certification must be documented on a Verification/Certification page.

Fire Behavior Analyst (FBAN) and Long Term Fire Analyst (LTAN)

For qualification as a FBAN, the PTB should be initiated (with the FBAN position being identified by crossing out LTAN on the cover). The FBAN tasks only need to be completed once.

Once qualified as FBAN, to become a LTAN a new Front Cover Initiation page and a new Verification/Certification page must be printed and initiated (with the LTAN position being identified by crossing out the FBAN positions on the cover) and the additional tasks in the PTB for LTAN must be completed.

For qualification as an LTAN (without prior FBAN qualification), the PTB indicating LTAN will be initiated and all tasks in the PTB must be accomplished and evaluated.

Note: If an LTAN meets the prerequisite experience and qualifications of an FBAN, the FBAN qualification may be granted by the certifying official. Certification must be documented on a Verification/Certification page.

Fire Effects Monitor (FEMO) and Field Observer (FOBS)

The FEMO tasks only need to be completed once; the additional tasks specific to FOBS must be completed to obtain FOBS qualification. The FEMO and FOBS PTBs can be initiated at the same time; the tasks can be completed simultaneously. A Verification/Certification page is included in the PTB for each position.

Aircraft Base Radio Operator (ABRO) and Takeoff and Landing Coordinator (TOLC)

The ABRO tasks only need to be completed once; the additional tasks specific to TOLC must be completed to obtain TOLC qualification. The ABRO and TOLC PTBs cannot be initiated at the same time; the tasks must be completed for the ABRO before the TOLC PTB can be initiated. A Verification/Certification page is included in the PTB for each position.

POSITION CATEGORIES

Criteria for Position Consideration in the PMS 310-1

The following seven criteria must be met for a position to be considered for inclusion in the PMS 310-1:

1. The position is needed for national mobilization;
2. The position is interagency in scope;
3. The position has been reviewed and is supported by the interagency community;
4. The position supports the NWCG mission;
5. The position qualifications have been submitted by an NWCG member, agency, Geographic Area Coordinating Group, or NWCG working team;
6. No other position exists that can accomplish these tasks;
7. The primary position qualifications are not addressed or supported by industry standards/requirements and training.

There are five position categories recognized by the National Wildfire Coordinating Group (NWCG):

1. Incident Command System (ICS)
2. Wildland Fire
3. Incident Support
4. Associated Activities
5. Technical Specialists

The NWCG Operations and Workforce Development Committee (OWDC) has established and approved qualifications and position task books for the following four position categories:

1. Incident Command System (ICS)
2. Wildland Fire
3. Incident Support
4. Associated Activities

Technical Specialists

Technical Specialists are personnel with specialized skills gained through educational degree programs or industry training of established standards. These personnel may perform the same duties during an incident that they perform in their regular job and may have supplemental training in the Incident Command System in order to utilize their specialized skills in the incident environment.

Although position codes have been assigned to technical specialist positions that can be used within the Incident Command System, no minimum qualifications have been established by NWCG.

For titles and position codes of identified technical specialists see the Incident Qualifications and Certification System (IQCS) website <http://iqcs.nwcg.gov>

Incident Command System (ICS) Positions

Incident Command System (ICS) positions: In the ICS, organizational chart recognized by NWCG for use on wildland fires and for response to all-hazard incidents. This category includes ICS positions approved under the National Incident Management System (NIMS).

Positions with an * have agency established qualifications and no NWCG position task book.

Agency Representative (AREP)*
Air Operations Branch Director (AOBD)
Air Support Group Supervisor (ASGS)
Air Tactical Group Supervisor (ATGS)
Air Tanker/Fixed Wing Coordinator (ATCO)*
Area Command Aviation Coordinator (ACAC)
Area Commander (ACDR)
Assistant Area Commander, Logistics (ACLC)
Assistant Area Commander, Planning (ACPC)
Base/Camp Manager (BCMG)
Claims Specialist (CLMS)
Commissary Manager (CMSY)
Communications Unit Leader (COML)
Compensation/Claims Unit Leader (COMP)
Compensation-for-Injury Specialist (INJR)
Cost Unit Leader (COST)
Demobilization Unit Leader (DMOB)
Division/Group Supervisor (DIVS)
Documentation Unit Leader (DOCL)
Equipment Manager (EQPM)
Equipment Time Recorder (EQTR)
Facilities Unit Leader (FACL)
Finance/Administration Section Chief Type 1 (FSC1)
Finance/Administration Section Chief Type 2 (FSC2)
Food Unit Leader (FDUL)
Ground Support Unit Leader (GSUL)
Helibase Manager Type 1 (6 or more helicopters) (HEB1)
Helibase Manager Type 2 (1-5 helicopters) (HEB2)
Helicopter Coordinator (HLCO)
Incident Commander Type 1 (ICT1)
Incident Commander Type 2 (ICT2)
Incident Commander Type 3 (ICT3)
Incident Commander Type 4 (ICT4)
Incident Communications Center Manager (INCM)
Incident Communications Technician (COMT)
Liaison Officer (LOFR)
Logistics Section Chief Type 1 (LSC1)
Logistics Section Chief Type 2 (LSC2)
Medical Unit Leader (MEDL)
Operations Branch Director (OPBD)*
Operations Section Chief Type 1 (OSC1)

Operations Section Chief Type 2 (OSC2)
Ordering Manager (ORDM)
Personnel Time Recorder (PTRC)
Planning Section Chief Type 1 (PSC1)
Planning Section Chief Type 2 (PSC2)
Procurement Unit Leader (PROC)
Public Information Officer (PIOF)
Public Information Officer Type 1 (PIO1)
Public Information Officer Type 2 (PIO2)
Receiving/Distribution Manager (RCDM)
Resources Unit Leader (RESL)
Safety Officer Type 1 (SOF1)
Safety Officer Type 2 (SOF2)
Safety Officer, Line (SOFR)
Security Manager (SECM)
Service Branch Director (SVBD)*
Situation Unit Leader (SITL)
Staging Area Manager (STAM)
Status/Check-In Recorder (SCKN)
Strike Team Leader Crew (STCR)
Strike Team Leader Engine (STEN)
Strike Team Leader Heavy Equipment (STEQ)
Supply Unit Leader (SPUL)
Support Branch Director (SUBD)*
Task Force Leader (TFLD)
Time Unit Leader (TIME)

Wildland Fire Positions

Wildland Fire positions: needed specifically for wildfire and prescribed fire.

Crew Boss, Single Resource (CRWB)
Crew Representative (CREP)
Engine Boss, Single Resource (ENGB)
Felling Boss, Single Resource (FELB)
Field Observer (FOBS)
Fire Behavior Analyst (FBAN)
Fire Effects Monitor (FEMO)
Firefighter Type 1 (FFT1)
Firefighter Type 2 (FFT2)
Firing Boss, Single Resource (FIRB)
Heavy Equipment Boss, Single Resource (HEQB)
Helicopter Crewmember (HECM)
Helicopter Manager, Single Resource (HMGB)
Incident Commander Type 5 (ICT5)
Long Term Fire Analyst (LTAN)
Prescribed Fire Burn Boss Type 1 (RXB1)
Prescribed Fire Burn Boss Type 2 (RXB2)
Prescribed Fire Manager Type 1 (RXM1)

Prescribed Fire Manager Type 2 (RXM2)
Strategic Operational Planner (SOPL)
Structure Protection Specialist (STPS)

Incident Support Positions

Incident Support positions: used in support of incident management but not necessarily directly attached to an incident or ICS organization.

Aircraft Base Radio Operator (ABRO)
Aircraft Dispatcher (ACDP)
Deck Coordinator (DECK)
Display Processor (DPRO)
Expanded Dispatch Coordinator (CORD)
Expanded Dispatch Recorder (EDRC)
Expanded Dispatch Supervisory Dispatcher (EDSP)
Expanded Dispatch Support Dispatcher (EDSD)
Geographic Information System Specialist (GISS)
Human Resource Specialist (HRSP)
Incident Business Advisor Type 1 (IBA1)
Incident Business Advisor Type 2 (IBA2)
Initial Attack Dispatcher (IADP)
Interagency Resource Representative (IARR)*
Radio Operator (RADO)
Single Engine Air Tanker Manager (SEMG)
Take-Off and Landing Coordinator (TOLC)
Training Specialist (TNSP)

Associated Activities Positions

Associated Activities positions: needed for associated activities not directly involved in or in support of an incident.

Fire Prevention Education Team Leader (PETL)
Fire Prevention Education Team Member (PETM)
Wildland Fire Investigation Team Member (INTM)
Wildland Fire Investigator (INVF)

This page intentionally left blank.

DRAFT

**QUALIFICATIONS FOR COMMAND AND
GENERAL STAFF POSITIONS**

DRAFT

Area Commander (ACDR)

(Position Category: ICS)

REQUIRED TRAINING

Area Command (S-620)

REQUIRED EXPERIENCE

Satisfactory performance as an Assistant Area Commander Planning ([ACPC](#))

+

Successful position performance as an Area Commander (ACDR) on a wildfire incident

OR

Satisfactory performance as an Assistant Area Commander Logistics ([ACLC](#))

+

Successful position performance as an Area Commander (ACDR) on a wildfire incident

OR

Satisfactory performance as an Incident Commander Type 1 ([ICT1](#)) on a National Type 1 Incident Management Team

+

Successful position performance as an Area Commander (ACDR) on a wildfire incident

PHYSICAL FITNESS LEVEL

[None Required](#)

THESE POSITIONS MAINTAIN CURRENCY FOR ACDR

Assistant Area Commander Planning ([ACPC](#))

Assistant Area Commander Logistics ([ACLC](#))

Incident Commander Type 1 ([ICT1](#))

ACDR MAINTAINS CURRENCY FOR THESE POSITIONS

Assistant Area Commander Planning ([ACPC](#))

Assistant Area Commander Logistics ([ACLC](#))

Incident Commander Type 1 ([ICT1](#))

Operations Section Chief Type 1 ([OSC1](#))

Planning Section Chief Type 1 ([PSC1](#))

OTHER TRAINING WHICH SUPPORTS DEVELOPMENT OF KNOWLEDGE AND SKILLS

None

Incident Commander Type 1 (ICT1)

(Position Category: ICS)

REQUIRED TRAINING

Advanced Incident Management (S-520) or Complex Incident Management Course (CIMC)
Annual Fireline Safety Refresher (RT-130)

REQUIRED EXPERIENCE

Satisfactory performance as an Incident Commander Type 2 (ICT2)

+

Successful position performance as an Incident Commander Type 1 (ICT1) on a wildfire incident

PHYSICAL FITNESS LEVEL

None Required

THESE POSITIONS MAINTAIN CURRENCY FOR ICT1

Area Commander (ACDR)

Assistant Area Commander Logistics (ACLC)

Assistant Area Commander Planning (ACPC)

Incident Commander Type 2 (ICT2)

Finance/Administration Section Chief Type 1 (FSC1)

Logistics Section Chief Type 1 (LSC1)

Operations Section Chief Type 1 (OSC1)

Planning Section Chief Type 1 (PSC1)

ICT1 MAINTAINS CURRENCY FOR THESE POSITIONS

Incident Commander Type 2 (ICT2)

Incident Commander Type 3 (ICT3)

Assistant Area Commander Logistics (ACLC)

Assistant Area Commander Planning (ACPC)

Planning Section Chief Type 1 (PSC1)

OTHER TRAINING WHICH SUPPORTS DEVELOPMENT OF KNOWLEDGE AND SKILLS

None

Incident Commander Type 2 (ICT2)

(Position Category: ICS)

REQUIRED TRAINING

Command and General Staff (S-420)
Annual Fireline Safety Refresher (RT-130)

REQUIRED EXPERIENCE

Satisfactory performance as an Incident Commander Type 3 (ICT3)
+
Satisfactory performance as an Operations Section Chief Type 2 (OSC2)
+
Successful position performance as an Incident Commander Type 2 (ICT2) on a wildfire incident
OR
Satisfactory performance as an Incident Commander Type 3 (ICT3)
+
Satisfactory performance as a Planning Section Chief Type 2 (PSC2)
+
Successful position performance as an Incident Commander Type 2 (ICT2) on a wildfire incident
OR
Satisfactory performance as an Incident Commander Type 3 (ICT3)
+
Satisfactory performance as a Logistics Section Chief Type 2 (LSC2)
+
Successful position performance as an Incident Commander Type 2 (ICT2) on a wildfire incident
OR
Satisfactory performance as an Incident Commander Type 3 (ICT3)
+
Satisfactory performance as a Finance/Administration Section Chief Type 2 (FSC2)
+
Successful position performance as an Incident Commander Type 2 (ICT2) on a wildfire incident

PHYSICAL FITNESS LEVEL

None Required

THESE POSITIONS MAINTAIN CURRENCY FOR ICT2

Incident Commander Type 1 (ICT1)
Finance/Administration Section Chief Type 2 (FSC2)
Logistics Section Chief Type 2 (LSC2)
Operations Section Chief Type 2 (OSC2)
Planning Section Chief Type 2 (PSC2)
Finance/Administration Section Chief Type 1 (FSC1)
Logistics Section Chief Type 1 (LSC1)
Operations Section Chief Type 1 (OSC1)
Planning Section Chief Type 1 (PSC1)

ICT2 MAINTAINS CURRENCY FOR THESE POSITIONS

- Incident Commander Type 1 (ICT1)
- Incident Commander Type 3 (ICT3)
- Operations Section Chief Type 1 (OSC1)
- Operations Branch Director (OPBD)
- Operations Section Chief Type 2 (OSC2)
- Planning Section Chief Type 2 (PSC2)
- Finance/Administration Section Chief Type 2 (FSC2)
- Logistics Section Chief Type 2 (LSC2)

OTHER TRAINING WHICH SUPPORTS DEVELOPMENT OF KNOWLEDGE AND SKILLS

- Advanced ICS (I-400)
- Incident Commander (S-400)
- Organizational Leadership in the Fire Service (L-480)

DRAFT

Incident Commander Type 3 (ICT3)

(Position Category: ICS)

REQUIRED TRAINING

Extended Attack Incident Commander (S-300)
Introduction to Wildland Fire Behavior Calculations (S-390)
Annual Fireline Safety Refresher (RT-130)

REQUIRED EXPERIENCE

Satisfactory performance as an Incident Commander Type 4 (ICT4)
+
Satisfactory performance as a Task Force Leader (TFLD)
+
Successful position performance as an Incident Commander Type 3 (ICT3) on a wildfire incident
OR
Satisfactory position performance as an Incident Commander Type 4 (ICT4)
+
Satisfactory performance as any Strike Team Leader (STCR, STEQ, STEN)
+
Satisfactory performance in any two Single Resource Boss positions (one must be CRWB or ENGB)
+
Successful position performance as an Incident Commander Type 3 (ICT3) on a wildfire incident

PHYSICAL FITNESS LEVEL

Arduous

THESE POSITIONS MAINTAIN CURRENCY FOR ICT3

Incident Commander Type 1 (ICT1)
Incident Commander Type 2 (ICT2)
Operations Section Chief Type 1 (OSC1)
Operations Branch Director (OPBD)
Operations Section Chief Type 2 (OSC2)
Division/Group Supervisor (DIVS)
Task Force Leader (TFLD)
Any Strike Team Leader (STCR, STEN, STEQ)
Prescribed Fire Burn Boss Type 1 (RXB1)

ICT3 MAINTAINS CURRENCY FOR THESE POSITIONS

Operations Branch Director (OPBD)
Operations Section Chief Type 2 (OSC2)
Division/Group Supervisor (DIVS)
Structure Protection Specialist (STPS)
Strategic Operational Planner (SOPL)
Task Force Leader (TFLD)
Any Single Resource Boss position (CRWB, HEQB, ENGB, FELB, FIRB, HMGB)
Any Strike Team Leader (STCR, STEN, STEQ)
Firefighter Type 1 (FFT1)
Firefighter Type 2 (FFT2)

OTHER TRAINING WHICH SUPPORTS DEVELOPMENT OF KNOWLEDGE AND SKILLS

Incident Leadership (L-381)

DRAFT

Incident Commander Type 4 (ICT4)

(Position Category: ICS)

REQUIRED TRAINING

Initial Attack Incident Commander (S-200)

Annual Fireline Safety Refresher (RT-130)

REQUIRED EXPERIENCE

Satisfactory performance in any Single Resource Boss position (CRWB, HEQB, ENGB, FELB, FIRB, HMGB)

+

Successful position performance as an Incident Commander Type 4 (ICT4) on a wildfire incident

PHYSICAL FITNESS LEVEL

Arduous

THESE POSITIONS MAINTAIN CURRENCY FOR ICT4

Incident Commander Type 3 (ICT3)

Division/Group Supervisor (DIVS)

Air Tactical Group Supervisor (ATGS)

Task Force Leader (TFLD)

Any Single Resource Boss position (CRWB, HEQB, ENGB, FELB, FIRB, HMGB)

Prescribed Fire Burn Boss Type 2 (RXB2)

Safety Officer, Line (SOFR)

ICT4 MAINTAINS CURRENCY FOR THESE POSITIONS

Task Force Leader (TFLD)

Any Single Resource Boss position (CRWB, HEQB, ENGB, FELB, FIRB, HMGB)

Firefighter Type 1 (FFT1)

Firefighter Type 2 (FFT2)

OTHER TRAINING WHICH SUPPORTS DEVELOPMENT OF KNOWLEDGE AND SKILLS

Ignition Operations (S-234)

Fire Operations in the Wildland/Urban Interface (S-215)

Incident Commander Type 5 (ICT5)

(Position Category: ICS)

REQUIRED TRAINING

Firefighter Type 1 (S-131)
Look up, Look Down, Look Around (S-133)
Annual Fireline Safety Refresher (RT-130)

REQUIRED EXPERIENCE

Satisfactory performance as a Firefighter Type 2 (FFT2)
+
Successful position performance as an Incident Commander Type 5 (ICT5) on a wildfire incident.

PHYSICAL FITNESS LEVEL

Arduous

THESE POSITIONS MAINTAIN CURRENCY FOR ICT5

Incident Commander Type 4 (ICT4)
Firefighter Type 1 (FFT1)

ICT5 MAINTAINS CURRENCY FOR THESE POSITIONS

Firefighter Type 1 (FFT1)
Firefighter Type 2 (FFT2)

OTHER TRAINING WHICH SUPPORTS DEVELOPMENT OF KNOWLEDGE AND SKILLS

Wildland Fire Chain Saws (S-212)
Portable Pumps and Water Use (S-211)

Note: The ICT5 position is not prerequisite to the NWCG Incident Commander Type 4 (ICT4) position.

Note: The Firefighter Type 1 (FFT1) and Incident Commander Type 5 (ICT5) Position Task Books are combined. However, the positions are not combined. The FFT1 tasks are completed only once; additional tasks must be completed to meet the ICT5 level. The FFT1 and ICT5 tasks can be completed simultaneously. The Required Experience is satisfactory performance as a Firefighter Type 2 (FFT2).

Safety Officer Type 1 (SOF1)

(Position Category: ICS)

REQUIRED TRAINING

Advanced Incident Management (S-520) or Complex Incident Management Course (CIMC)
Annual Fireline Safety Refresher (RT-130)

REQUIRED EXPERIENCE

Satisfactory performance as a Safety Officer Type 2 (SOF2)

+

Successful position performance as a Safety Officer Type 1 (SOF1) on a wildland fire incident

PHYSICAL FITNESS LEVEL

Moderate

THESE POSITIONS MAINTAIN CURRENCY FOR SOF1

Operations Section Chief Type 2 (OSC2)

Safety Officer Type 2 (SOF2)

SOF1 MAINTAINS CURRENCY FOR THESE POSITIONS

Safety Officer Type 2 (SOF2)

OTHER TRAINING WHICH SUPPORTS DEVELOPMENT OF KNOWLEDGE AND SKILLS

None

Safety Officer Type 2 (SOF2)

(Position Category: ICS)

REQUIRED TRAINING

Command and General Staff (S-420)

Annual Fireline Safety Refresher (RT-130)

REQUIRED EXPERIENCE

Satisfactory performance as a Division/Group Supervisor (**DIVS**)

+

Successful position performance as a Safety Officer Type 2 (SOF2) on a wildland fire incident

PHYSICAL FITNESS LEVEL

Moderate

THESE POSITIONS MAINTAIN CURRENCY FOR SOF2

Division/Group Supervisor (**DIVS**)

Safety Officer Type 1 (**SOF1**)

Safety Officer, Line (**SOFR**)

SOF2 MAINTAINS CURRENCY FOR THESE POSITIONS

Safety Officer Type 1 (**SOF1**)

Safety Officer, Line (**SOFR**)

OTHER TRAINING WHICH SUPPORTS DEVELOPMENT OF KNOWLEDGE AND SKILLS

Advanced ICS (I-400)

Safety Officer (S-404)

Organizational Leadership in the Fire Service (L-480)

Safety Officer, Line (SOFR)

(Position Category: ICS)

REQUIRED TRAINING

Annual Fireline Safety Refresher (RT-130)

REQUIRED EXPERIENCE

Satisfactory performance as any Strike Team Leader ([STCR](#), [STEQ](#), [STEN](#)),

+

Successful position performance as a Safety Officer, Line (SOFR) on a wildland fire incident

OR

Satisfactory performance as an Incident Commander Type 4 ([ICT4](#))

+

Successful position performance as a Safety Officer, Line (SOFR) on a wildland fire incident

PHYSICAL FITNESS LEVEL

[Moderate](#)

THESE POSITIONS MAINTAIN CURRENCY FOR SOFR

Incident Commander Type 4 ([ICT4](#))

Task Force Leader ([TFLD](#))

Any Strike Team Leader ([STCR](#), [STEN](#), [STEQ](#))

Safety Officer Type 2 ([SOF2](#))

SOFR MAINTAINS CURRENCY FOR THESE POSITIONS

Incident Commander Type 4 ([ICT4](#))

Task Force Leader ([TFLD](#))

Any Strike Team Leader ([STCR](#), [STEN](#), [STEQ](#))

Safety Officer Type 2 ([SOF2](#))

OTHER TRAINING WHICH SUPPORTS DEVELOPMENT OF KNOWLEDGE AND SKILLS

Intermediate ICS (I-300)

Note: The Safety Officer, Line (SOFR) position is not prerequisite to the NWCG Safety Officer Type 2 (SOF2) position.

Public Information Officer Type 1 (PIO1)

(Position Category: ICS)

REQUIRED TRAINING

Advanced Incident Management (S-520) or Complex Incident Management Course (CIMC)
Annual Fireline Safety Refresher (RT-130)

REQUIRED EXPERIENCE

Satisfactory performance as a Public Information Officer Type 2 (PIO2)

+

Successful position performance as a Public Information Officer Type 1 (PIO1)

PHYSICAL FITNESS LEVEL

None Required

THESE POSITIONS MAINTAIN CURRENCY FOR PIO1

Public Information Officer Type 2 (PIO2)

PIO1 MAINTAINS CURRENCY FOR THESE POSITIONS

Public Information Officer Type 2 (PIO2)

OTHER TRAINING WHICH SUPPORTS DEVELOPMENT OF KNOWLEDGE AND SKILLS

None

Public Information Officer Type 2 (PIO2)

(Position Category: ICS)

REQUIRED TRAINING

Command and General Staff (S-420)
Annual Fireline Safety Refresher (RT-130)

REQUIRED EXPERIENCE

Successful position performance as a Public Information Officer (PIOF)
+
Successful position performance as a Public Information Officer Type 2 (PIO2)

PHYSICAL FITNESS LEVEL

None Required

THESE POSITIONS MAINTAIN CURRENCY FOR PIO2

Public Information Officer Type 1 (PIO1)
Public Information Officer (PIOF)

PIO2 MAINTAINS CURRENCY FOR THESE POSITIONS

Public Information Officer Type 1 (PIO1)

OTHER TRAINING WHICH SUPPORTS DEVELOPMENT OF KNOWLEDGE AND SKILLS

Advanced ICS (I-400)
Information Officer (S-403)

Public Information Officer (PIOF)

(Position Category: ICS)

REQUIRED TRAINING

Introduction to Incident Information (S-203)

Basic Firefighter Training:

Introduction to ICS (I-100)

Human Factors in the Wildland Fire Service (L-180)

Introduction to Wildland Fire Behavior (S-190)

Firefighter Training (S-130)

Annual Fireline Safety Refresher (RT-130)*

REQUIRED EXPERIENCE

Successful position performance as a Public Information Officer (PIOF)

PHYSICAL FITNESS LEVEL

None Required

THESE POSITIONS MAINTAIN CURRENCY FOR PIOF

Public Information Officer Type 2 (PIO2)

PIOF MAINTAINS CURRENCY FOR THESE POSITIONS

Public Information Officer Type 2 (PIO2)

OTHER TRAINING WHICH SUPPORTS DEVELOPMENT OF KNOWLEDGE AND SKILLS

Intermediate ICS (I-300)

Basic Wildland Fire Orientation (S-110)

Liaison Officer (LOFR)

(Position Category: ICS)

REQUIRED TRAINING

None

REQUIRED EXPERIENCE

Successful position performance as a Liaison Officer (LOFR)

PHYSICAL FITNESS LEVEL

None Required

THESE POSITIONS MAINTAIN CURRENCY FOR LOFR

Agency Representative ([AREP](#))

LOFR MAINTAINS CURRENCY FOR THESE POSITIONS

Agency Representative ([AREP](#))

OTHER TRAINING WHICH SUPPORTS DEVELOPMENT OF KNOWLEDGE AND SKILLS

Intermediate Wildland Fire Behavior (S-290)

Advanced ICS (I-400)

Command and General Staff (S-420)

Organizational Leadership in the Fire Service (L-480)

Advanced Incident Management (S-520)

Agency Representative (AREP)*
(Position Category: ICS)

REQUIRED TRAINING

None

REQUIRED EXPERIENCE

Agency established

PHYSICAL FITNESS LEVEL

None Required

THESE POSITIONS MAINTAIN CURRENCY FOR AREP

Liaison Officer (LOFR)

AREP MAINTAINS CURRENCY FOR THESE POSITIONS

Liaison Officer (LOFR)

OTHER TRAINING WHICH SUPPORTS DEVELOPMENT OF KNOWLEDGE AND SKILLS

Human Factors in the Wildland Fire Service (L-180)

Note: This is not a Command or General Staff Position

** Designates agency established position qualifications*

Prescribed Fire Manager Type 1 (RXM1)

(Position Category: Wildland Fire)

REQUIRED TRAINING

Annual Fireline Safety Refresher (RT-130)

REQUIRED EXPERIENCE

Satisfactory performance as a Prescribed Fire Burn Boss Type 1 (RXB1)

+

Successful position performance as a Prescribed Fire Manager Type 1 (RXM1) on a Prescribed Fire Incident

PHYSICAL FITNESS LEVEL

None Required

THESE POSITIONS MAINTAIN CURRENCY FOR RXM1

Prescribed Fire Manager Type 2 (RXM2)

RXM1 MAINTAINS CURRENCY FOR THESE POSITIONS

Prescribed Fire Burn Boss Type 1 (RXB1)

Prescribed Fire Burn Boss Type 2 (RXB2)

OTHER TRAINING WHICH SUPPORTS DEVELOPMENT OF KNOWLEDGE AND SKILLS

Intermediate ICS (I-300)

Fire Program Management (M-581)

Prescribed Fire Manager Type 2 (RXM2)

(Position Category: Wildland Fire)

REQUIRED TRAINING

Annual Fireline Safety Refresher (RT-130)

REQUIRED EXPERIENCE

Satisfactory performance as a Prescribed Fire Burn Boss Type 2 (RXB2)

+

Successful position performance as a Prescribed Fire Manager Type 2 (RXM2) on a Prescribed Fire Incident

PHYSICAL FITNESS LEVEL

None Required

THESE POSITIONS MAINTAIN CURRENCY FOR RXM2

Prescribed Fire Burn Boss Type 2 (RXB2)

RXM2 MAINTAINS CURRENCY FOR THESE POSITIONS

Prescribed Fire Burn Boss Type 2 (RXB2)

Prescribed Fire Manager Type 1 (RXM1)

OTHER TRAINING WHICH SUPPORTS DEVELOPMENT OF KNOWLEDGE AND SKILLS

Intermediate ICS (I-300)

Fire Program Management (M-581)

Prescribed Fire Burn Boss Type 1 (RXB1)

(Position Category: Wildland Fire)

REQUIRED TRAINING

Advanced Wildland Fire Behavior Calculations (S-490)
Annual Fireline Safety Refresher (RT-130)

REQUIRED EXPERIENCE

Satisfactory performance as a Prescribed Fire Burn Boss Type 2 (RXB2)

+

Successful position performance as a Prescribed Fire Burn Boss Type 1 (RXB1) on a prescribed fire incident

PHYSICAL FITNESS LEVEL

Light

THESE POSITIONS MAINTAIN CURRENCY FOR RXB1

Prescribed Fire Burn Boss Type 2 (RXB2)
Prescribed Fire Manager Type 1 (RXM1)

RXB1 MAINTAINS CURRENCY FOR THESE POSITIONS

Incident Commander Type 3 (ICT3)
Task Force Leader (TFLD)
Any Strike Team Leader (STCR, STEQ, STEN)
Any Single Resource Boss (ENGB, FELB, FIRB, HMGB, HEQB, CRWB)
Prescribed Fire Burn Boss Type 2 (RXB2)

OTHER TRAINING WHICH SUPPORTS DEVELOPMENT OF KNOWLEDGE AND SKILLS

Fire Program Management (M-581)
Advanced Fire Effects (RX-510)
Smoke Management Techniques (RX-410)

Prescribed Fire Burn Boss Type 2 (RXB2)

(Position Category: Wildland Fire)

REQUIRED TRAINING

Introduction to Wildland Fire Behavior Calculations (S-390)
Annual Fireline Safety Refresher (RT-130)

REQUIRED EXPERIENCE

Satisfactory performance as a Firing Boss, Single Resource (FIRB)

+

Satisfactory performance as an Incident Commander Type 4 (ICT4)

+

Successful position performance as a Prescribed Fire Burn Boss Type 2 (RXB2) on a prescribed fire incident

PHYSICAL FITNESS LEVEL

Moderate

THESE POSITIONS MAINTAIN CURRENCY FOR RXB2

Strategic Operational Planner (SOPL)
Prescribed Fire Manager Type 1 (RXM1)
Prescribed Fire Manager Type 2 (RXM2)
Prescribed Fire Burn Boss Type 1 (RXB1)

RXB2 MAINTAINS CURRENCY FOR THESE POSITIONS

Incident Commander Type 4 (ICT4)
Strategic Operational Planner (SOPL)
Prescribed Fire Burn Boss Type 1 (RXB1)
Any Single Resource Boss (ENGB, FELB, FIRB, HMGB, HEQB, CRWB)

OTHER TRAINING WHICH SUPPORTS DEVELOPMENT OF KNOWLEDGE AND SKILLS

Fireline Leadership (L-380)
Prescribed Fire Burn Plan Preparation (RX-341)
Introduction to Fire Effects (RX-310)
Prescribed Fire Implementation (RX-301)

This page intentionally left blank.

DRAFT

QUALIFICATIONS FOR OPERATIONS POSITIONS

DRAFT

Operations Section Chief Type 1 (OSC1)

(Position Category: ICS)

REQUIRED TRAINING

Advanced Incident Management (S-520) or Complex Incident Management Course (CIMC)
Annual Fireline Safety Refresher (RT-130)

REQUIRED EXPERIENCE

Satisfactory performance as an Operations Section Chief Type 2 (OSC2)

+

Successful position performance as an Operations Section Chief Type 1 (OSC1) on a wildfire incident

PHYSICAL FITNESS LEVEL

Moderate

THESE POSITIONS MAINTAIN CURRENCY FOR OSC1

Area Commander (ACDR)

Assistant Area Commander, Planning (ACPC)

Assistant Area Commander, Logistics (ACLC)

Incident Commander Type 1 (ICT1)

Incident Commander Type 2 (ICT2)

Operations Branch Director (OPBD)

Operations Section Chief Type 2 (OSC2)

OSC1 MAINTAINS CURRENCY FOR THESE POSITIONS

Incident Commander Type 1 (ICT1)

Incident Commander Type 3 (ICT3)

Operations Branch Director (OPBD)

Operations Section Chief Type 2 (OSC2)

Division/Group Supervisor (DIVS)

OTHER TRAINING WHICH SUPPORTS DEVELOPMENT OF KNOWLEDGE AND SKILLS

None

Operations Section Chief Type 2 (OSC2)

(Position Category: ICS)

REQUIRED TRAINING

Command and General Staff (S-420)

Annual Fireline Safety Refresher (RT-130)

REQUIRED EXPERIENCE

Satisfactory performance as a Division/Group Supervisor (**DIVS**)

+

Successful position performance as an Operations Section Chief Type 2 (OSC2) on a wildfire incident

PHYSICAL FITNESS LEVEL

Moderate

THESE POSITIONS MAINTAIN CURRENCY FOR OSC2

Incident Commander Type 2 (**ICT2**)

Incident Commander Type 3 (**ICT3**)

Operations Section Chief Type 1 (**OSC1**)

Operations Branch Director (**OPBD**)

Division/Group Supervisor (**DIVS**)

OSC2 MAINTAINS CURRENCY FOR THESE POSITIONS

Incident Commander Type 2 (**ICT2**)

Incident Commander Type 3 (**ICT3**)

Operations Branch Director (**OPBD**)

Operations Section Chief Type 1 (**OSC1**)

Division/Group Supervisor (**DIVS**)

Structure Protection Specialist (**STPS**)

OTHER TRAINING WHICH SUPPORTS DEVELOPMENT OF KNOWLEDGE AND SKILLS

Advanced ICS (I-400)

Operations Section Chief (S-430)

Organizational Leadership in the Fire Service (L-480)

Operations Branch Director (OPBD)*

(Position Category: ICS)

REQUIRED TRAINING

Annual Fireline Safety Refresher (RT-130)

REQUIRED EXPERIENCE

Satisfactory performance as an Operations Section Chief Type 2 (OSC2)

PHYSICAL FITNESS LEVEL

Moderate

THESE POSITIONS MAINTAIN CURRENCY FOR OPBD

Incident Commander Type 2 (ICT2)

Incident Commander Type 3 (ICT3)

Operations Section Chief Type 1 (OSC1)

Operations Section Chief Type 2 (OSC2)

Division/Group Supervisor (DIVS)

OPBD MAINTAINS CURRENCY FOR THESE POSITIONS

Incident Commander Type 3 (ICT3)

Operations Section Chief Type 1 (OSC1)

Operations Section Chief Type 2 (OSC2)

Division/Group Supervisor (DIVS)

Structure Protection Specialist (STPS)

OTHER TRAINING WHICH SUPPORTS DEVELOPMENT OF KNOWLEDGE AND SKILLS

None

** Designates agency established position qualifications*

Structure Protection Specialist (STPS)

(Position Category: Wildland Fire)

REQUIRED TRAINING

Annual Fireline Safety Refresher (RT-130)

REQUIRED EXPERIENCE

Satisfactory performance as a Division/Group Supervisor (DIVS)

+

Successful position performance as a Structure Protection Specialist (STPS) on a wildland fire incident

OR

Satisfactory performance as an Incident Commander Type 3 (ICT3)

+

Successful position performance as a Structure Protection Specialist (STPS) on a wildland fire incident

PHYSICAL FITNESS LEVEL

Moderate

THESE POSITIONS MAINTAIN CURRENCY FOR STPS

Incident Commander Type 3 (ICT3)

Operations Section Chief Type 1 (OSC1)

Operations Branch Director (OPBD)

Operations Section Chief Type 2 (OSC2)

Task Force Leader (TFLD)

Any Strike Team Leader (STCR, STEQ, STEN)

STPS MAINTAINS CURRENCY FOR THESE POSITIONS

Incident Commander Type 3 (ICT3)

Incident Commander Type 4 (ICT4)

Operations Branch Director (OPBD)

Operations Section Chief Type 2 (OSC2)

Structure Protection Specialist (STPS)

Task Force Leader (TFLD)

Any Strike Team Leader (STCR, STEQ, STEN)

Any Single Resource Boss (ENGB, FELB, FIRB, HMGB, HEQB, CRWB)

Firefighter Type 1 (FFT1)

Firefighter Type 2 (FFT2)

OTHER TRAINING WHICH SUPPORTS DEVELOPMENT OF KNOWLEDGE AND SKILLS

None

Division/Group Supervisor (DIVS)

(Position Category: ICS)

REQUIRED TRAINING

Introduction to Wildland Fire Behavior Calculations (S-390)

Division/Group Supervisor (S-339)

Annual Fireline Safety Refresher (RT-130)

REQUIRED EXPERIENCE

Satisfactory performance as a Task Force Leader (TFLD)

+

Successful position performance as a Division/Group Supervisor (DIVS) on a wildland fire incident

OR

Satisfactory performance as an Incident Commander Type 3 (ICT3)

+

Successful position performance as a Division/Group Supervisor (DIVS) on a wildland fire incident

OR

Satisfactory performance as an Incident Commander Type 4 (ICT4)

+

Satisfactory performance in any two Strike Team Leader positions (one must be STCR or STEN)

+

Successful position performance as a Division/Group Supervisor (DIVS) on a wildland fire incident

PHYSICAL FITNESS LEVEL

Arduous

THESE POSITIONS MAINTAIN CURRENCY FOR DIVS

Incident Commander Type 3 (ICT3)

Operations Section Chief Type 1 (OSC1)

Operations Branch Director (OPBD)

Operations Section Chief Type 2 (OSC2)

Task Force Leader (TFLD)

Any Strike Team Leader (STCR, STEQ, STEN)

DIVS MAINTAINS CURRENCY FOR THESE POSITIONS

Incident Commander Type 3 (ICT3)

Incident Commander Type 4 (ICT4)

Operations Branch Director (OPBD)

Operations Section Chief Type 2 (OSC2)

Structure Protection Specialist (STPS)

Task Force Leader (TFLD)

Any Strike Team Leader (STCR, STEQ, STEN)

Any Single Resource Boss (ENGB, FELB, FIRB, HMGB, HEQB, CRWB)

Firefighter Type 1 (FFT1)

Firefighter Type 2 (FFT2)

OTHER TRAINING WHICH SUPPORTS DEVELOPMENT OF KNOWLEDGE AND SKILLS

Incident Leadership (L-381)

DRAFT

Task Force Leader (TFLD)

(Position Category: ICS)

REQUIRED TRAINING

Task Force/Strike Team Leader (S-330)
Fire Operations in the Wildland/Urban Interface (S-215)
Annual Fireline Safety Refresher (RT-130)

REQUIRED EXPERIENCE

Satisfactory performance as any Strike Team Leader ([STCR](#), [STEQ](#), [STEN](#),)
+
Successful position performance as a Task Force Leader (TFLD) on a wildland fire incident
OR
Satisfactory performance in any two Single Resource Boss positions (one must be [CRWB](#) or [ENGB](#))
+
Satisfactory performance as an Incident Commander Type 4 ([ICT4](#))
+
Successful position performance as a Task Force Leader (TFLD) on a wildland fire incident

PHYSICAL FITNESS LEVEL

[Arduous](#)

THESE POSITIONS MAINTAIN CURRENCY FOR TFLD

Incident Commander Type 3 ([ICT3](#))
Incident Commander Type 4 ([ICT4](#))
Division/Group Supervisor ([DIVS](#))
Prescribed Fire Burn Boss Type 1 ([RXB1](#))
Any Strike Team Leader ([STCR](#), [STEQ](#), [STEN](#))
Safety Officer, Line ([SOFR](#))
Prescribed Fire Burn Boss Type 1 ([RXB1](#))

TFLD MAINTAINS CURRENCY FOR THESE POSITIONS

Incident Commander Type 3 ([ICT3](#))
Incident Commander Type 4 ([ICT4](#))
Division/Group Supervisor ([DIVS](#))
Any Strike Team Leader ([STCR](#), [STEQ](#), [STEN](#))
Any Single Resource Boss ([ENGB](#), [FELB](#), [FIRB](#), [HMGB](#), [HEQB](#), [CRWB](#))
Firefighter Type 1 ([FFT1](#))
Firefighter Type 2 ([FFT2](#))
Prescribed Fire Burn Boss Type 1 ([RXB1](#))

OTHER TRAINING WHICH SUPPORTS DEVELOPMENT OF KNOWLEDGE AND SKILLS

Intermediate ICS (I-300)
Fireline Leadership (L-380)
Tactical Decision Making in Wildland Fire (S-336)

Note: The Task Force Leader (TFLD) and Strike Team Leader (STCR, STEQ, STEN) Position Task Books are combined. However, the positions are not combined. Strike Team Leader tasks are completed only once. The Required Experience for TFLD must be met prior to completing additional TFLD tasks.

DRAFT

Strike Team Leader Crew (STCR)

(Position Category: ICS)

REQUIRED TRAINING

Task Force/Strike Team Leader (S-330)
Fire Operations in the Wildland/Urban Interface (S-215)
Annual Fireline Safety Refresher (RT-130)

REQUIRED EXPERIENCE

Satisfactory performance as a Crew Boss, Single Resource (CRWB)
+
Successful position performance as a Strike Team Leader Crew (STCR) on a wildland fire incident

PHYSICAL FITNESS LEVEL

Arduous

THESE POSITIONS MAINTAIN CURRENCY FOR STCR

Incident Commander Type 3 (ICT3)
Division/Group Supervisor (DIVS)
Task Force Leader (TFLD)
Any Strike Team Leader (STEQ, STEN)
Prescribed Fire Burn Boss Type 1 (RXB1)
Safety Officer, Line (SOFR)

STCR MAINTAINS CURRENCY FOR THESE POSITIONS

Incident Commander Type 3 (ICT3)
Division/Group Supervisor (DIVS)
Task Force Leader (TFLD)
Any Strike Team Leader (STEQ, STEN)
Crew Boss, Single Resource (CRWB)
Firefighter Type 1 (FFT1)
Firefighter Type 2 (FFT2)

OTHER TRAINING WHICH SUPPORTS DEVELOPMENT OF KNOWLEDGE AND SKILLS

Intermediate ICS (I-300)
Fireline Leadership (L-380)
Tactical Decision Making in Wildland Fire (S-336)

Note: The Task Force Leader (TFLD) and Strike Team Leader (STCR, STEQ, STEN,) Position Task Books are combined. However, the positions are not combined. Strike Team Leader tasks are completed only once. The Required Experience for TFLD must be met prior to completing additional TFLD tasks.

Upon satisfactory performance in the prerequisite Single Resource Boss position, the specific strike team leader task book may be initiated. Once qualified as a Strike Team Leader, any additional Single Resource Boss qualifications will also qualify the individual in that

corresponding strike team leader position—without having to complete the Strike Team Leader PTB for the new position—once agency certification is documented on the PTB Verification/Certification page.

DRAFT

Strike Team Leader Heavy Equipment (STEQ)

(Position Category: ICS)

REQUIRED TRAINING

Task Force/Strike Team Leader (S-330)
Fire Operations in the Wildland/Urban Interface (S-215)
Annual Fireline Safety Refresher (RT-130)

REQUIRED EXPERIENCE

Satisfactory performance as a Heavy Equipment Boss, Single Resource (HEQB)
+
Successful position performance as a Strike Team Leader Heavy Equipment (STEQ) on a wildland fire incident

PHYSICAL FITNESS LEVEL

Moderate

THESE POSITIONS MAINTAIN CURRENCY FOR HEQB

Incident Commander Type 3 (ICT3)
Division/Group Supervisor (DIVS)
Task Force Leader (TFLD)
Any Strike Team Leader (STCR, STEN)
Prescribed Fire Burn Boss Type 1 (RXB1)
Safety Officer, Line (SOFR)

STEQ MAINTAINS CURRENCY FOR THESE POSITIONS

Incident Commander Type 3 (ICT3)
Division/Group Supervisor (DIVS)
Task Force Leader (TFLD)
Any Strike Team Leader (STCR, STEN)
Heavy Equipment Boss, Single Resource (HEQB)
Firefighter Type 1 (FFT1)
Firefighter Type 2 (FFT2)

OTHER TRAINING WHICH SUPPORTS DEVELOPMENT OF KNOWLEDGE AND SKILLS

Intermediate ICS (I-300)
Fireline Leadership (L-380)
Tactical Decision Making in Wildland Fire (S-336)

Note: The Task Force Leader (TFLD) and Strike Team Leader (STCR, STEQ, STEN,) Position Task Books are combined. However, the positions are not combined. Strike Team Leader tasks are completed only once. The Required Experience for TFLD must be met prior to completing additional TFLD tasks.

Upon satisfactory performance in the prerequisite Single Resource Boss position, the specific strike team leader task book may be initiated. Once qualified as a Strike Team Leader, any additional Single Resource Boss qualifications will also qualify the individual in that

corresponding strike team leader position—without having to complete the Strike Team Leader PTB for the new position—once agency certification is documented on the PTB Verification/Certification page.

DRAFT

Strike Team Leader Engine (STEN)

(Position Category: ICS)

REQUIRED TRAINING

Task Force/Strike Team Leader (S-330)
Fire Operations in the Wildland/Urban Interface (S-215)
Annual Fireline Safety Refresher (RT-130)

REQUIRED EXPERIENCE

Satisfactory performance as an Engine Boss, Single Resource (ENGB)
+
Successful position performance as a Strike Team Leader Engine (STEN) on a wildland fire incident

PHYSICAL FITNESS LEVEL

Moderate

THESE POSITIONS MAINTAIN CURRENCY FOR STEN

Incident Commander Type 3 (ICT3)
Division/Group Supervisor (DIVS)
Task Force Leader (TFLD)
Any Strike Team Leader (STCR, STEQ)
Prescribed Fire Burn Boss Type 1 (RXB1)
Safety Officer, Line (SOFR)

STEN MAINTAINS CURRENCY FOR THESE POSITIONS

Incident Commander Type 3 (ICT3)
Division/Group Supervisor (DIVS)
Task Force Leader (TFLD)
Any Strike Team Leader (STCR, STEQ)
Engine Boss, Single Resource (ENGB)
Firefighter Type 1 (FFT1)
Firefighter Type 2 (FFT2)

OTHER TRAINING WHICH SUPPORTS DEVELOPMENT OF KNOWLEDGE AND SKILLS

Intermediate ICS (I-300)
Fireline Leadership (L-380)
Tactical Decision Making in Wildland Fire (S-336)

Note: The Task Force Leader (TFLD) and Strike Team Leader (STCR, STEQ, STEN,) Position Task Books are combined. However, the positions are not combined. Strike Team Leader tasks are completed only once. The Required Experience for TFLD must be met prior to completing additional TFLD tasks.

Upon satisfactory performance in the prerequisite Single Resource Boss position, the specific strike team leader task book may be initiated. Once qualified as a Strike Team Leader, any additional Single Resource Boss qualifications will also qualify the individual in that

corresponding strike team leader position—without having to complete the Strike Team Leader PTB for the new position—once agency certification is documented on the PTB Verification/Certification page.

DRAFT

Crew Representative (CREP)

(Position Category: Wildland Fire)

REQUIRED TRAINING

Annual Fireline Safety Refresher (RT-130)

REQUIRED EXPERIENCE

Satisfactory performance as a Crew Boss, Single Resource (CRWB)

+

Successful position performance as a Crew Representative (CREP)

PHYSICAL FITNESS LEVEL

Moderate

THESE POSITIONS MAINTAIN CURRENCY FOR CREP

Crew Boss, Single Resource (CRWB)

Interagency Resource Representative (IARR)

CREP MAINTAINS CURRENCY FOR THESE POSITIONS

Crew Boss, Single Resource (CRWB)

OTHER TRAINING WHICH SUPPORTS DEVELOPMENT OF KNOWLEDGE AND SKILLS

None

Crew Boss, Single Resource (CRWB)

(Position Category: Wildland Fire)

REQUIRED TRAINING

Intermediate Wildland Fire Behavior (S-290)

Crew Boss (Single Resource) (S-230)

Annual Fireline Safety Refresher (RT-130)

REQUIRED EXPERIENCE

Satisfactory performance as a Firefighter Type 1 (FFT1)

+

Successful position performance as a Crew Boss, Single Resource (CRWB) on a wildland fire

PHYSICAL FITNESS LEVEL

Arduous

THESE POSITIONS MAINTAIN CURRENCY FOR CRWB

Incident Commander Type 3 (ICT3)

Incident Commander Type 4 (ICT4)

Division/Group Supervisor (DIVS)

Task Force Leader (TFLD)

Any Strike Team Leader (STCR, STEQ, STEN)

Crew Representative (CREP)

Any Single Resource Boss (ENGB, FELB, FIRB, HMGB, HEQB)

Prescribed Fire Burn Boss Type 1 (RXB1)

Prescribed Fire Burn Boss Type 2 (RXB2)

CRWB MAINTAINS CURRENCY FOR THESE POSITIONS

Incident Commander Type 4 (ICT4)

Any Single Resource Boss (ENGB, FELB, FIRB, HMGB, HEQB)

Firefighter Type 1 (FFT1)

Firefighter Type 2 (FFT2)

OTHER TRAINING WHICH SUPPORTS DEVELOPMENT OF KNOWLEDGE AND SKILLS

Basic ICS (I-200)

Followership to Leadership (L-280)

Basic Air Operations (S-270)

Interagency Incident Business Management (S-260)

Ignition Operations (S-234)

Heavy Equipment Boss, Single Resource (HEQB)

(Position Category: Wildland Fire)

REQUIRED TRAINING

Intermediate Wildland Fire Behavior (S-290)
Crew Boss (Single Resource) (S-230)
Annual Fireline Safety Refresher (RT-130)

REQUIRED EXPERIENCE

Satisfactory performance as a Firefighter Type 1 (FFT1)

+

Successful position performance as a Heavy Equipment Boss, Single Resource (HEQB) on a wildland fire incident

PHYSICAL FITNESS LEVEL

Arduous

THESE POSITIONS MAINTAIN CURRENCY FOR HEQB

Incident Commander Type 3 (ICT3)
Incident Commander Type 4 (ICT4)
Division/Group Supervisor (DIVS)
Task Force Leader (TFLD)
Strike Team Leader Heavy Equipment (STEQ)
Any Single Resource Boss (CRWB, ENGB, FELB, FIRB, HMGB)
Prescribed Fire Burn Boss Type 1 (RXB1)
Prescribed Fire Burn Boss Type 2 (RXB2)
Safety Officer, Line (SOFR)

HEQB MAINTAINS CURRENCY FOR THESE POSITIONS

Incident Commander Type 4 (ICT4)
Any Single Resource Boss (CRWB, ENGB, FELB, FIRB, HMGB)
Firefighter Type 1 (FFT1)
Firefighter Type 2 (FFT2)

OTHER TRAINING WHICH SUPPORTS DEVELOPMENT OF KNOWLEDGE AND SKILLS

Basic ICS (I-200)
Followership to Leadership (L-280)
Basic Air Operations (S-270)
Interagency Incident Business Management (S-260)
Ignition Operations (S-234)
Dozer Boss (Single Resource) (S-232)

Engine Boss, Single Resource (ENGB)

(Position Category: Wildland Fire)

REQUIRED TRAINING

Intermediate Wildland Fire Behavior (S-290)

Crew Boss (Single Resource) (S-230)

Annual Fireline Safety Refresher (RT-130)

REQUIRED EXPERIENCE

Satisfactory performance as a Firefighter Type 1 (FFT1)

+

Successful position performance as an Engine Boss, Single Resource (ENGB) on a wildland fire incident

PHYSICAL FITNESS LEVEL

Arduous

THESE POSITIONS MAINTAIN CURRENCY FOR ENGB

Incident Commander Type 3 (ICT3)

Incident Commander Type 4 (ICT4)

Division/Group Supervisor (DIVS)

Task Force Leader (TFLD)

Strike Team Leader Engine (STEN)

Any Single Resource Boss (CRWB, FELB, FIRB, HMGB, HEQB)

Prescribed Fire Burn Boss Type 1 (RXB1)

Prescribed Fire Burn Boss Type 2 (RXB2)

Safety Officer, Line (SOFR)

ENGB MAINTAINS CURRENCY FOR THESE POSITIONS

Incident Commander Type 4 (ICT4)

Any Single Resource Boss (CRWB, FELB, FIRB, HMGB, HEQB)

Firefighter Type 1 (FFT1)

Firefighter Type 2 (FFT2)

OTHER TRAINING WHICH SUPPORTS DEVELOPMENT OF KNOWLEDGE AND SKILLS

Basic ICS (I-200)

Followership to Leadership (L-280)

Basic Air Operations (S-270)

Interagency Incident Business Management (S-260)

Ignition Operations (S-234)

Engine Boss (Single Resource) (S-231)

Felling Boss, Single Resource (FELB)

(Position Category: Wildland Fire)

REQUIRED TRAINING

Intermediate Wildland Fire Behavior (S-290)

Crew Boss (Single Resource) (S-230)

Annual Fireline Safety Refresher (RT-130)

REQUIRED EXPERIENCE

Satisfactory performance as a Firefighter Type 1 (FFT1)

+

Successful position performance as a Felling Boss, Single Resource (FELB) on a wildland fire incident

PHYSICAL FITNESS LEVEL

Arduous

THESE POSITIONS MAINTAIN CURRENCY FOR FELB

Incident Commander Type 3 (ICT3)

Incident Commander Type 4 (ICT4)

Division/Group Supervisor (DIVS)

Task Force Leader (TFLD)

Any Single Resource Boss (CRWB, ENGB, FIRB, HMGB, HEQB)

Prescribed Fire Burn Boss Type 1 (RXB1)

Prescribed Fire Burn Boss Type 2 (RXB2)

Safety Officer, Line (SOFR)

FELB MAINTAINS CURRENCY FOR THESE POSITIONS

Incident Commander Type 4 (ICT4)

Any Single Resource Boss (CRWB, ENGB, FIRB, HMGB, HEQB)

Firefighter Type 1 (FFT1)

Firefighter Type 2 (FFT2)

OTHER TRAINING WHICH SUPPORTS DEVELOPMENT OF KNOWLEDGE AND SKILLS

Basic ICS (I-200)

Followership to Leadership (L-280)

Basic Air Operations (S-270)

Interagency Incident Business Management (S-260)

Wildland Fire Chain Saws (S-212)

Firing Boss, Single Resource (FIRB)

(Position Category: Wildland Fire)

REQUIRED TRAINING

Intermediate Wildland Fire Behavior (S-290)

Crew Boss (Single Resource) (S-230)

Annual Fireline Safety Refresher (RT-130)

REQUIRED EXPERIENCE

Satisfactory performance as a Firefighter Type 1 (FFT1)

+

Successful position performance as a Firing Boss, Single Resource (FIRB) on a wildland fire incident

PHYSICAL FITNESS LEVEL

Moderate

THESE POSITIONS MAINTAIN CURRENCY FOR FIRB

Incident Commander Type 3 (ICT3)

Incident Commander Type 4 (ICT4)

Division/Group Supervisor (DIVS)

Task Force Leader (TFLD)

Any Single Resource Boss (CRWB, FELB, ENGB, HMGB, HEQB)

Prescribed Fire Burn Boss Type 1 (RXB1)

Prescribed Fire Burn Boss Type 2 (RXB2)

Safety Officer, Line (SOFR)

FIRB MAINTAINS CURRENCY FOR THESE POSITIONS

Incident Commander Type 4 (ICT4)

Any Single Resource Boss (CRWB, ENGB, ENGB, HMGB, HEQB)

Firefighter Type 1 (FFT1)

Firefighter Type 2 (FFT2)

OTHER TRAINING WHICH SUPPORTS DEVELOPMENT OF KNOWLEDGE AND SKILLS

Basic ICS (I-200)

Followership to Leadership (L-280)

Basic Air Operations (S-270)

Interagency Incident Business Management (S-260)

Ignition Operations (S-234)

Staging Area Manager (STAM)

(Position Category: ICS)

REQUIRED TRAINING

None

REQUIRED EXPERIENCE

Successful position performance as a Staging Area Manager (STAM)

PHYSICAL FITNESS LEVEL

Light

THESE POSITIONS MAINTAIN CURRENCY FOR STAM

Firefighter Type 1 (FFT1)

STAM MAINTAINS CURRENCY FOR THESE POSITIONS

None

OTHER TRAINING WHICH SUPPORTS DEVELOPMENT OF KNOWLEDGE AND SKILLS

Basic ICS (I-200)

Staging Area Manager (J-236)

Firefighter Type 1 (FFT1)

(Position Category: Wildland Fire)

REQUIRED TRAINING

Firefighter Type 1 (S-131)
Look Up, Look Down, Look Around (S-133)
Annual Fireline Safety Refresher (RT-130)

REQUIRED EXPERIENCE

Satisfactory performance as a Firefighter Type 2 (FFT2)
+
Successful position performance as a Firefighter Type 1 (FFT1) on a wildland fire incident

PHYSICAL FITNESS LEVEL

Arduous

THESE POSITIONS MAINTAIN CURRENCY FOR FFT1

Incident Commander Type 3 (ICT3)
Incident Commander Type 4 (ICT4)
Incident Commander Type 5 (ICT5)
Task Force Leader (TFLD)
Any Strike Team Leader (STCR, STEN, STEQ)
Any Single Resource Boss (CRWB, FIRB, ENGB, FELB, HMGB, HEQB)
Safety Officer, Line (SOFR)

FFT1 MAINTAINS CURRENCY FOR THESE POSITIONS

Firefighter Type 2 (FFT2)
Staging Area Manager (STAM)

OTHER TRAINING WHICH SUPPORTS DEVELOPMENT OF KNOWLEDGE AND SKILLS

Wildland Fire Chain Saws (S-212)
Portable Pumps and Water Use (S-211)

Note: The Firefighter Type 1 (FFT1) and Incident Commander Type 5 (ICT5) Position Task Books are combined. However, the positions are not combined. The FFT1 tasks are completed only once; additional tasks must be completed to meet the ICT5 level. The FFT1 and ICT5 tasks can be completed simultaneously. The Required Experience is satisfactory performance as a Firefighter Type 2 (FFT2).

Firefighter Type 2 (FFT2)

(Position Category: Wildland Fire)

REQUIRED TRAINING

Basic Firefighter Training:

Introduction to ICS (I-100)

Human Factors in the Wildland Fire Service (L-180)

Introduction to Wildland Fire Behavior (S-190)

Firefighter Training
(S-130)

Annual Fireline Safety Refresher (RT-130)*

REQUIRED EXPERIENCE

None

PHYSICAL FITNESS LEVEL

Arduous

THESE POSITIONS MAINTAIN CURRENCY FOR FFT2

Incident Commander Type 3 (ICT3)

Incident Commander Type 4 (ICT4)

Incident Commander Type 5 (ICT5)

Task Force Leader (TFLD)

Any Strike Team Leader (STCR, STEN, STEQ)

Any Single Resource Boss (CRWB, FIRB, ENGB, FELB, HMGB, HEQB)

Safety Officer, Line (SOFR)

FFT2 MAINTAINS CURRENCY FOR THESE POSITIONS

None

OTHER TRAINING WHICH SUPPORTS DEVELOPMENT OF KNOWLEDGE AND SKILLS

None

**Note: Annual Fireline Safety Refresher (RT-130) is not required for the first year as a Firefighter Type 2 (FFT2); however, it is required for subsequent years.*

Note: For the Firefighter Type 2 (FFT2) position, satisfactory completion of the Required Training meets the position qualification requirements.

This page intentionally left blank.

DRAFT

QUALIFICATIONS FOR AIR OPERATIONS POSITIONS

DRAFT

Area Command Aviation Coordinator (ACAC)

(Position Category: ICS)

REQUIRED TRAINING

Area Command (S-620)

REQUIRED EXPERIENCE

Satisfactory performance as an Air Operations Branch Director (AOBD) on a National Type 1 Incident Management Team

+

Successful position performance as an Area Command Aviation Coordinator (ACAC) on a wildfire incident

PHYSICAL FITNESS LEVEL

None Required

THESE POSITIONS MAINTAIN CURRENCY FOR ACAC

Air Operations Branch Director (AOBD)

ACAC MAINTAINS CURRENCY FOR THESE POSITIONS

Air Operations Branch Director (AOBD)

Air Support Group Supervisor (ASGS)

OTHER TRAINING WHICH SUPPORTS DEVELOPMENT OF KNOWLEDGE AND SKILLS

None

Air Operations Branch Director (AOBD)

(Position Category: ICS)

REQUIRED TRAINING

Air Operations Branch Director (S-470)

REQUIRED EXPERIENCE

Satisfactory performance as an Air Support Group Supervisor ([ASGS](#))

+

Successful position performance as an Air Operations Branch Director (AOBD) on a wildfire incident

PHYSICAL FITNESS LEVEL

[None Required](#)

THESE POSITIONS MAINTAIN CURRENCY FOR AOBD

Area Command Aviation Coordinator ([ACAC](#))

Air Support Group Supervisor ([ASGS](#))

AOBD MAINTAINS CURRENCY FOR THESE POSITIONS

Air Support Group Supervisor ([ASGS](#))

Helibase Manager Type 1 (6 or more helicopters) ([HEB1](#))

Helibase Manager Type 2 (1-5 helicopters) ([HEB2](#))

Helicopter Manager, Single Resource ([HMGB](#))

OTHER TRAINING WHICH SUPPORTS DEVELOPMENT OF KNOWLEDGE AND SKILLS

Advanced ICS (I-400)

Organizational Leadership in the Fire Service (L-480)

Air Support Group Supervisor (ASGS)

(Position Category: ICS)

REQUIRED TRAINING

Annual Fireline Safety Refresher (RT-130)

REQUIRED EXPERIENCE

Satisfactory performance as a Helibase Manager Type 1(HEB1)

+

Successful position performance as an Air Support Group Supervisor (ASGS) on a wildland fire incident

PHYSICAL FITNESS LEVEL

None Required

THESE POSITIONS MAINTAIN CURRENCY FOR ASGS

Area Command Aviation Coordinator (ACAC)

Air Operations Branch Director (AOBD)

Helibase Manager Type 1 (HEB1)

ASGS MAINTAINS CURRENCY FOR THESE POSITIONS

Air Operations Branch Director (AOBD)

Helibase Manager Type 1 (6 or more helicopters) (HEB1)

Helibase Manager Type 2 (1-5 helicopters) (HEB2)

Helicopter Manager, Single Resource (HMGB)

OTHER TRAINING WHICH SUPPORTS DEVELOPMENT OF KNOWLEDGE AND SKILLS

Intermediate ICS (I-300)

Air Support Group Supervisor (S-375)

Helibase Manager Type 1 (HEB1)
(Six Or More Helicopters)
(Position Category: ICS)

REQUIRED TRAINING

Annual Fireline Safety Refresher (RT-130)

REQUIRED EXPERIENCE

Satisfactory performance as a Helibase Manager Type 2 ([HEB2](#))

+

Successful position performance as a Helibase Manager Type 1 ([HEB1](#))

PHYSICAL FITNESS LEVEL

[Light](#)

THESE POSITIONS MAINTAIN CURRENCY FOR HEB1

Air Operations Branch Director ([AOBD](#))

Air Support Group Supervisor ([ASGS](#))

Helibase Manager Type 2 ([HEB2](#))

HEB1 MAINTAINS CURRENCY FOR THESE POSITIONS

Air Support Group Supervisor ([ASGS](#))

Helibase Manager Type 1 (6 or more helicopters) ([HEB1](#))

Helibase Manager Type 2 (1-5 helicopters) ([HEB2](#))

Helicopter Crewmember ([HECM](#))

OTHER TRAINING WHICH SUPPORTS DEVELOPMENT OF KNOWLEDGE AND SKILLS

None

Helibase Manager Type 2 (HEB2)

(One To Five Helicopters)

(Position Category: ICS)

REQUIRED TRAINING

Helibase Manager (S-371)
Annual Fireline Safety Refresher (RT-130)

REQUIRED EXPERIENCE

Satisfactory performance as a Helicopter Manager, Single Resource (HMGB)
+
Successful position performance as a Helibase Manager Type 2 (HEB2)

PHYSICAL FITNESS LEVEL

Light

THESE POSITIONS MAINTAIN CURRENCY FOR HEB2

Air Operations Branch Director (AOBD)
Air Support Group Supervisor (ASGS)
Helibase Manager Type 1 (HEB1)
Helicopter Manager, Single Resource Boss (HMGB)

HEB2 MAINTAINS CURRENCY FOR THESE POSITIONS

Helibase Manager Type 1 (HEB1)
Helicopter Manager, Single Resource Boss (HMGB)
Helicopter Crewmember (HECM)
Take-Off and Landing Coordinator (TOLC)
Aircraft Base Radio Operator (ABRO)

OTHER TRAINING WHICH SUPPORTS DEVELOPMENT OF KNOWLEDGE AND SKILLS

Intermediate ICS (I-300)
Fireline Leadership (L-380)

Helicopter Manager, Single Resource (HMGB)*

(Position Category: ICS)

REQUIRED TRAINING

Intermediate Wildland Fire Behavior (S-290)

Crew Boss (Single Resource) (S-230)

Helicopter Manager (S-372)

Helicopter Manager Workshop (RT-372)

Triennial, after completion of S-372 must attend RT-372 once every three years in order to manage federal helicopters)

Annual Fireline Safety Refresher (RT-130)

REQUIRED EXPERIENCE

Satisfactory performance as a Helicopter Crewmember ([HECM](#))

+

Satisfactory performance as a Firefighter Type 1 ([FFT1](#))

+

Successful position performance as a Helicopter Manager, Single Resource (HMGB) on a wildland fire incident

PHYSICAL FITNESS

[Moderate](#)

THESE POSITIONS MAINTAIN CURRENCY FOR HMGB

Air Operations Branch Director ([AOBD](#))

Air Support Group Supervisor ([ASGS](#))

Helicopter Coordinator ([HLCO](#))

Helibase Manager Type 1 ([HEB1](#))

Helibase Manager Type ([HEB2](#))

HMGB MAINTAINS CURRENCY FOR THESE POSITIONS

Incident Commander Type 4 ([ICT4](#))

Helibase Manager Type ([HEB2](#))

Helicopter Crewmember ([HECM](#))

Any Single Resource Boss ([CRWB](#), [FIRB](#), [ENGB](#), [FELB](#), [HEQB](#))

Firefighter Type 1 ([FFT1](#))

Firefighter Type 2 ([FFT2](#))

OTHER TRAINING WHICH SUPPORTS DEVELOPMENT OF KNOWLEDGE AND SKILLS

Basic ICS (I-200)

Followership to Leadership (L-280)

Basic Air Operations (S-270)

Interagency Incident Business Management (S-260)

Ignition Operations (S-234)

Contract Administration Skills

Note: *When Helicopter Managers are intended to be utilized for other missions they must be ordered with additional qualifications such as: ICT4, PLDO, Agency Exclusive Use Prerequisites, etc.

DRAFT

Helicopter Crewmember (HECM)

(Position Category: Wildland Fire)

REQUIRED TRAINING

Helicopter Crewmember (S-271)

Aviation Transportation of Hazardous Material (A-110)

Triennial, must complete A-110 once every three years in order to manage federal helicopters

Annual Fireline Safety Refresher (RT-130)

REQUIRED EXPERIENCE

Satisfactory performance as a Firefighter Type 2 (FFT2)

+

Successful position performance as a Helicopter Crewmember (HECM)

PHYSICAL FITNESS LEVEL

Arduous

THESE POSITIONS MAINTAIN CURRENCY FOR HECM

Air Operations Branch Director (AOBD)

Air Support Group Supervisor (ASGS)

Helicopter Coordinator (HLCO)

Helibase Manager Type 1 (HEB1)

Helibase Manager Type 2 (HEB2)

Helicopter Manager, Single Resource (HMGB)

HECM MAINTAINS CURRENCY FOR THESE POSITIONS

Aircraft Base Radio Operator (ABRO)

Firefighter Type 2 (FFT2)

OTHER TRAINING WHICH SUPPORTS DEVELOPMENT OF KNOWLEDGE AND SKILLS

None

Air Tactical Group Supervisor (ATGS)

(Position Category: ICS)

REQUIRED TRAINING

Air Tactical Group Supervisor (S-378)

Annual Fireline Safety Refresher (RT-130)

REQUIRED EXPERIENCE

Satisfactory performance as a Division/Group Supervisor (**DIVS**)

+

Successful position performance as an Air Tactical Group Supervisor (ATGS) on a wildfire incident

OR

Satisfactory performance as an Incident Commander Type 3 (**ICT3**)

+

Successful position performance as an Air Tactical Group Supervisor (ATGS) on a wildfire incident

PHYSICAL FITNESS LEVEL

None Required

THESE POSITIONS MAINTAIN CURRENCY FOR ATGS

None

ATGS MAINTAINS CURRENCY FOR THESE POSITIONS

Incident Commander Type 4 (**ICT4**)

Division/Group Supervisor (**DIVS**)

Helicopter Coordinator (**HLCO**)

OTHER TRAINING WHICH SUPPORTS DEVELOPMENT OF KNOWLEDGE AND SKILLS

None

Helicopter Coordinator (HLCO)

(Position Category: ICS)

REQUIRED TRAINING

Air Tactical Group Supervisor (S-378)

Annual Fireline Safety Refresher (RT-130)

REQUIRED EXPERIENCE

Satisfactory performance as a Task Force Leader (TFLD)

+

Successful position performance as Helicopter Coordinator (HLCO)

OR

Satisfactory performance in one Strike Team Leader position (STCR, STEQ, STEN)

+

Successful position performance as Helicopter Coordinator (HLCO)

PHYSICAL FITNESS LEVEL

None Required

THESE POSITIONS MAINTAIN CURRENCY FOR HLCO

Air Tactical Group Supervisor (ATGS)

HLCO MAINTAINS CURRENCY FOR THESE POSITIONS

Helicopter Manager, Single Resource (HMGB)

OTHER TRAINING WHICH SUPPORTS DEVELOPMENT OF KNOWLEDGE AND SKILLS

None

Air Tanker/Fixed Wing Coordinator (ATCO)*
(Position Category: ICS)

REQUIRED TRAINING

Agency established

REQUIRED EXPERIENCE

Agency established

PHYSICAL FITNESS LEVEL

None Required

THESE POSITIONS MAINTAIN CURRENCY FOR ATCO

None

ATCO MAINTAINS CURRENCY FOR THESE POSITIONS

None

OTHER TRAINING WHICH SUPPORTS DEVELOPMENT OF KNOWLEDGE AND SKILLS

Fireline Leadership (L-380)

** Designates agency established position qualifications*

Single Engine Air Tanker Manager (SEMG)

(Position Category: Incident Support)

REQUIRED TRAINING

Single Engine Air Tanker Manager (S-273)
Basic Air Operations (S-270)

REQUIRED EXPERIENCE

Successful position performance as a Single Engine Air Tanker Manager (SEMG)

PHYSICAL FITNESS LEVEL

None Required

THESE POSITIONS MAINTAIN CURRENCY FOR SEMG

Air Tanker Base Manager (ATBM)*
Fixed-Wing Base Manager (FWBM)*
Helicopter Manager, Single Resource Boss (HMGB)

SEMG MAINTAINS CURRENCY FOR THESE POSITIONS

None

OTHER TRAINING WHICH SUPPORTS DEVELOPMENT OF KNOWLEDGE AND SKILLS

Single Engine Air Tanker Manager Workshop (RT-273) (Triennial)
Expanded Dispatch Recorder (D-110)
Basic ICS (I-200)
Basic Firefighter Training:
 Introduction to ICS (I-100)
 Human Factors in the Wildland Fire Service (L-180)
 Introduction to Wildland Fire Behavior (S-190)
 Firefighting Training (S-130)

** Air Tanker Base Manager (ATBM) and Fixed-Wing Base Manager (FWBM) are agency specific positions utilized by the Bureau of Land Management and U.S. Forest Service. Position task books are available at <http://www.nwccg.gov/>.*

Deck Coordinator (DECK)

(Position Category: Incident Support)

REQUIRED TRAINING

None

REQUIRED EXPERIENCE

Satisfactory performance as a Helicopter Crewmember ([HECM](#))

+

Satisfactory performance as a Takeoff and Landing Coordinator ([TOLC](#))

+

Successful position performance as a Deck Coordinator (DECK)

PHYSICAL FITNESS LEVEL

Light

THESE POSITIONS MAINTAIN CURRENCY FOR DECK

Helibase Manager Type 2 ([HEB2](#))

Takeoff and Landing Coordinator ([TOLC](#))

DECK MAINTAINS CURRENCY FOR THESE POSITIONS

Helicopter Crewmember ([HECM](#))

Takeoff and Landing Coordinator ([TOLC](#))

Aircraft Base Radio Operator ([ABRO](#))

OTHER TRAINING WHICH SUPPORTS DEVELOPMENT OF KNOWLEDGE AND SKILLS

None

Takeoff and Landing Coordinator (TOLC)

(Position Category: Incident Support)

REQUIRED TRAINING

None

REQUIRED EXPERIENCE

Satisfactory performance as Aircraft Base Radio Operator ([ABRO](#))

+

Successful position performance as a Takeoff and Landing Coordinator (TOLC)

PHYSICAL FITNESS LEVEL

[Light](#)

THESE POSITIONS MAINTAIN CURRENCY FOR TOLC

Helibase Manager Type 2 ([HEB2](#))

Deck Coordinator ([DECK](#))

Aircraft Base Radio Operator ([ABRO](#))

TOLC MAINTAINS CURRENCY FOR THESE POSITIONS

Deck Coordinator ([DECK](#))

Aircraft Base Radio Operator ([ABRO](#))

OTHER TRAINING WHICH SUPPORTS DEVELOPMENT OF KNOWLEDGE AND SKILLS

None

Aircraft Base Radio Operator (ABRO)

(Position Category: Incident Support)

REQUIRED TRAINING

None

REQUIRED EXPERIENCE

Successful position performance as an Aircraft Base Radio Operator (ABRO)

PHYSICAL FITNESS LEVEL

None Required

THESE POSITIONS MAINTAIN CURRENCY FOR ABRO

Helibase Manager Type 2 (**HEB2**)

Helicopter Crewmember (**HECM**)

Deck Coordinator (**DECK**)

Take-Off and Landing Coordinator (**TOLC**)

Radio Operator (**RADO**)

ABRO MAINTAINS CURRENCY FOR THESE POSITIONS

Take-Off and Landing Coordinator (**TOLC**)

Deck Coordinator (**DECK**)

Radio Operator (**RADO**)

OTHER TRAINING WHICH SUPPORTS DEVELOPMENT OF KNOWLEDGE AND SKILLS

None

This page intentionally left blank.

DRAFT

QUALIFICATIONS FOR PLANNING POSITIONS

DRAFT

Assistant Area Commander, Planning (ACPC)

(Position Category: ICS)

REQUIRED TRAINING

Area Command (S-620)

REQUIRED EXPERIENCE

Satisfactory performance as an Incident Commander or General Staff on a National Type 1 Incident Management Team

+

Successful position performance as an Assistant Area Commander, Planning (ACPC) on a wildfire incident

PHYSICAL FITNESS LEVEL

None Required

THESE POSITIONS MAINTAIN CURRENCY FOR ACPC

Area Commander (ACDR)

Assistant Area Commander, Logistics (ACLC)

Incident Commander Type 1 (ICT1)

ACPC MAINTAINS CURRENCY FOR THESE POSITIONS

Area Commander (ACDR)

Assistant Area Commander, Logistics (ACLC)

Incident Commander Type 1 (ICT1)

Planning Section Chief Type 1 (PSC1)

Operations Section Chief Type 1 (OSC1)

OTHER TRAINING WHICH SUPPORTS DEVELOPMENT OF KNOWLEDGE AND SKILLS

None

Planning Section Chief Type 1 (PSC1)

(Position Category: ICS)

REQUIRED TRAINING

Advanced Incident Management (S-520) or Complex Incident Management Course (CIMC)

REQUIRED EXPERIENCE

Satisfactory performance as a Planning Section Chief Type 2 (PSC2)

+

Successful position performance as a Planning Section Chief Type 1 (PSC1) on a wildland fire incident

PHYSICAL FITNESS LEVEL

None Required

THESE POSITIONS MAINTAIN CURRENCY FOR PSC1

Area Commander (ACDR)

Assistant Area Commander, Planning (ACPC)

Incident Commander Type 1 (ICT1)

Planning Section Chief Type 2 (PSC2)

PSC1 MAINTAINS CURRENCY FOR THESE POSITIONS

Incident Commander Type 1 (ICT1)

Planning Section Chief Type 2 (PSC2)

Situation Unit Leader (SITL)

Resources Unit Leader (RESL)

Status/Check-In Recorder (SCKN)

OTHER TRAINING WHICH SUPPORTS DEVELOPMENT OF KNOWLEDGE AND SKILLS

None

Planning Section Chief Type 2 (PSC2)

(Position Category: ICS)

REQUIRED TRAINING

Command and General Staff (S-420)

REQUIRED EXPERIENCE

Satisfactory performance as a Situation Unit Leader (SITL)

+

Satisfactory performance as a Resources Unit Leader (RESL)

+

Successful position performance as a Planning Section Chief Type 2 (PSC2) on a wildland fire incident

PHYSICAL FITNESS LEVEL

None Required

THESE POSITIONS MAINTAIN CURRENCY FOR PSC2

Incident Commander Type 1 (ICT1)

Incident Commander Type 2 (ICT2)

Planning Section Chief Type 1 (PSC1)

Resources Unit Leader (RESL)

Situation Unit Leader (SITL)

PSC2 MAINTAINS CURRENCY FOR THESE POSITIONS

Incident Commander Type 2 (ICT2)

Planning Section Chief Type 1 (PSC1)

Resources Unit Leader (RESL)

Situation Unit Leader (SITL)

Status/Check-In Recorder (SCKN)

Documentation Unit Leader (DOCL)

OTHER TRAINING WHICH SUPPORTS DEVELOPMENT OF KNOWLEDGE AND SKILLS

Advanced ICS (I-400)

Organizational Leadership in the Fire Service (L-480)

Planning Section Chief (S-440)

Situation Unit Leader (SITL)

(Position Category: ICS)

REQUIRED TRAINING

Annual Fireline Safety Refresher (RT-130)

REQUIRED EXPERIENCE

Satisfactory performance as an Incident Commander Type 4 (ICT4)

+

Successful position performance as a Situation Unit Leader (SITL) on a wildland fire incident

PHYSICAL FITNESS LEVEL

Light

THESE POSITIONS MAINTAIN CURRENCY FOR SITL

Planning Section Chief Type 1 (PSC1)

Planning Section Chief Type 2 (PSC2)

Field Observer (FOBS)

SITL MAINTAINS CURRENCY FOR THESE POSITIONS

Planning Section Chief Type 2 (PSC2)

Display Processor (DPRO)

OTHER TRAINING WHICH SUPPORTS DEVELOPMENT OF KNOWLEDGE AND SKILLS

Intermediate ICS (I-300)

Situation Unit Leader (S-346)

Fireline Leadership (L-380)

Field Observer (FOBS)

(Position Category: Wildland Fire)

REQUIRED TRAINING

Annual Fireline Safety Refresher (RT-130)

REQUIRED EXPERIENCE

Satisfactory performance as any Single Resource Boss ([CRWB](#), [HEQB](#), [ENGB](#), [FELB](#), [FIRB](#), [HMGB](#))

+

Successful position performance as a Field Observer (FOBS) on a wildland fire incident

PHYSICAL FITNESS LEVEL

[Moderate](#)

THESE POSITIONS MAINTAIN CURRENCY FOR FOBS

Any Single Resource Boss ([CRWB](#), [HEQB](#), [ENGB](#), [FELB](#), [FIRB](#), [HMGB](#))

Fire Effects Monitor ([FEMO](#))

FOBS MAINTAINS CURRENCY FOR THESE POSITIONS

Situation Unit Leader ([SITL](#))

Fire Effects Monitor ([FEMO](#))

OTHER TRAINING WHICH SUPPORTS DEVELOPMENT OF KNOWLEDGE AND SKILLS

Field Observer (S-244)

Geographic Information System Specialist (GISS)

(Position Category: Incident Support)

REQUIRED TRAINING

None

REQUIRED EXPERIENCE

Successful position performance as a Geographic Information System Specialist (GISS)

PHYSICAL FITNESS

None Required

THESE POSITIONS MAINTAIN CURRENCY FOR GISS

None

GISS MAINTAINS CURRENCY FOR THESE POSITIONS

None

OTHER TRAINING WHICH SUPPORTS DEVELOPMENT OF KNOWLEDGE AND SKILLS

Introduction to ICS (I-100)

Display Processor (S-245)

Basic Wildland Fire Orientation (S-110)

Geographic Information System (GIS) Specialist for Incident Management (S-341)

Display Processor (DPRO)

(Position Category: Incident Support)

REQUIRED TRAINING

None

REQUIRED EXPERIENCE

Successful position performance as a Display Processor (DPRO)

PHYSICAL FITNESS LEVEL

None Required

THESE POSITIONS MAINTAIN CURRENCY FOR DPRO

Situation Unit Leader ([SITL](#))

DPRO MAINTAINS CURRENCY FOR THESE POSITIONS

None

OTHER TRAINING WHICH SUPPORTS DEVELOPMENT OF KNOWLEDGE AND SKILLS

Introduction to ICS (I-100)

Display Processor (S-245)

Basic Wildland Fire Orientation (S-110)

Demobilization Unit Leader (DMOB)

(Position Category: ICS)

REQUIRED TRAINING

None

REQUIRED EXPERIENCE

Satisfactory performance as a Resources Unit Leader ([RESL](#))

+

Successful position performance as a Demobilization Unit Leader (DMOB)

PHYSICAL FITNESS LEVEL

[None Required](#)

THESE POSITIONS MAINTAIN CURRENCY FOR DMOB

Planning Section Chief Type 2 ([PSC2](#))

Resources Unit Leader ([RESL](#))

Expanded Dispatch Support Dispatcher ([EDSD](#))

DMOB MAINTAINS CURRENCY FOR THESE POSITIONS

Planning Section Chief Type 2 ([PSC2](#))

Resources Unit Leader ([RESL](#))

Status/Check-In Recorder ([SCKN](#))

OTHER TRAINING WHICH SUPPORTS DEVELOPMENT OF KNOWLEDGE AND SKILLS

Resources Unit Leader and Demobilization Unit Leader (S-349)

Resources Unit Leader (RESL)

(Position Category: ICS)

REQUIRED TRAINING

None

REQUIRED EXPERIENCE

Satisfactory performance as a Status/Check-In Recorder ([SCKN](#))

+

Successful position performance as a Resources Unit Leader (RESL)

PHYSICAL FITNESS LEVEL

[None Required](#)

THESE POSITIONS MAINTAIN CURRENCY FOR RESL

Planning Section Chief Type 1 ([PSC1](#))

Planning Section Chief Type 2 ([PSC2](#))

Demobilization Unit Leader ([DMOB](#))

Status/Check-In Recorder ([SCKN](#))

RESL MAINTAINS CURRENCY FOR THESE POSITIONS

Planning Section Chief Type 2 ([PSC2](#))

Demobilization Unit Leader ([DMOB](#))

Status/Check-In Recorder ([SCKN](#))

OTHER TRAINING WHICH SUPPORTS DEVELOPMENT OF KNOWLEDGE AND SKILLS

Intermediate ICS (I-300)

Fireline Leadership (L-380)

Resources Unit Leader and Demobilization Unit Leader (S-349)

Interagency Incident Business Management (S-260)

Status/Check-In Recorder (SCKN)

(Position Category: ICS)

REQUIRED TRAINING

None

REQUIRED EXPERIENCE

Successful position performance as a Status/Check-In Recorder (SCKN)

PHYSICAL FITNESS LEVEL

None Required

THESE POSITIONS MAINTAIN CURRENCY FOR SCKN

Planning Section Chief Type 1 (PSC1)

Planning Section Chief Type 2 (PSC2)

Resources Unit Leader (RESL)

Demobilization Unit Leader (DMOB)

SCKN MAINTAINS CURRENCY FOR THESE POSITIONS

Resources Unit Leader (RESL)

OTHER TRAINING WHICH SUPPORTS DEVELOPMENT OF KNOWLEDGE AND SKILLS

Incident Base Automation (I-Suite)

Introduction to ICS (I-100)

Human Factors in the Wildland Fire Service (L-180)

Status/Check-In Recorder (S-248)

Basic Wildland Fire Orientation (S-110)

Documentation Unit Leader (DOCL)

(Position Category: ICS)

REQUIRED TRAINING

None

REQUIRED EXPERIENCE

Successful position performance as a Documentation Unit Leader (DOCL)

PHYSICAL FITNESS LEVEL

None Required

THESE POSITIONS MAINTAIN CURRENCY FOR DOCL

Planning Section Chief Type 2 (PSC2)

DOCL MAINTAINS CURRENCY FOR THESE POSITIONS

None

OTHER TRAINING WHICH SUPPORTS DEVELOPMENT OF KNOWLEDGE AND SKILLS

Intermediate ICS (I-300)

Documentation Unit Leader (J-342)

Basic Wildland Fire Orientation (S-110)

Strategic Operational Planner (SOPL)

(Position Category: Wildland Fire)

REQUIRED TRAINING

Advanced Fire Management Applications (S-482)

Annual Fireline Safety Refresher (RT-130)

REQUIRED EXPERIENCE

Satisfactory performance as a Prescribed Fire Burn Boss Type 2 (RXB2)

+

Satisfactory performance as a Division/Group Supervisor (DIVS)

+

Successful position performance as a Strategic Operational Planner (SOPL)

PHYSICAL FITNESS LEVEL

Moderate

THESE POSITIONS MAINTAIN CURRENCY FOR SOPL

Incident Commander Type 3 (ICT3)

Division/Group Supervisor (DIVS)

Prescribed Fire Manager Type 1 (RXM1)

Prescribed Fire Burn Boss Type 2 (RXB2)

Long Term Fire Analyst (LTAN)

SOPL MAINTAINS CURRENCY FOR THESE POSITIONS

Prescribed Fire Burn Boss Type 2 (RXB2)

OTHER TRAINING WHICH SUPPORTS DEVELOPMENT OF KNOWLEDGE AND SKILLS

Fire Program Management (M-581)

Long Term Fire Analyst (LTAN)

(Position Category: Wildland Fire)

REQUIRED TRAINING

Advanced Fire Behavior Interpretation (S-590)
Geospatial Fire Analysis, Interpretation and Application (S-495)
Intermediate National Fire Danger Rating System (S-491)
Advanced Wildland Fire Behavior Calculations (S-490)
Introduction to Wildland Fire Behavior Calculations (S-390)
Annual Fireline Safety Refresher (RT-130)

REQUIRED EXPERIENCE

Satisfactory performance as a Fire Behavior Analyst (FBAN)
+
Successful position performance as a Long Term Fire Analyst (LTAN) on a wildland fire incident

OR

Satisfactory performance as a Fire Effects Monitor (FEMO)
+
Satisfactory performance as a Firing Boss, Single Resource (FIRB)
+
Successful position performance as a Long Term Fire Analyst (LTAN) on a wildland fire incident

PHYSICAL FITNESS LEVEL

Moderate

THESE POSITIONS MAINTAIN CURRENCY FOR LTAN

Fire Behavior Analyst (FBAN)

LTAN MAINTAINS CURRENCY FOR THESE POSITIONS

Strategic Operational Planner (SOPL)

OTHER TRAINING WHICH SUPPORTS DEVELOPMENT OF KNOWLEDGE AND SKILLS

Smoke Management Techniques (RX-410)
Advanced Fire Management (S-482)
BEHAVE PLUS

Fire Behavior Analyst (FBAN)

(Position Category: Wildland Fire)

REQUIRED TRAINING

Advanced Fire Behavior Interpretation (S-590)
Advanced Wildland Fire Behavior Calculations (S-490)
Annual Fireline Safety Refresher (RT-130)

REQUIRED EXPERIENCE

Satisfactory performance as a Division/Group Supervisor (**DIVS**)
+
Successful position performance as a Fire Behavior Analyst (FBAN) on a wildland fire incident

PHYSICAL FITNESS LEVEL

Moderate

THESE POSITIONS MAINTAIN CURRENCY FOR FBAN

None

FBAN MAINTAINS CURRENCY FOR THESE POSITIONS

Long Term Fire Analyst (**LTAN**)
Fire Effects Monitor (**FEMO**)

OTHER TRAINING WHICH SUPPORTS DEVELOPMENT OF KNOWLEDGE AND SKILLS

Intermediate National Fire Danger Rating System (S-491)

Fire Effects Monitor (FEMO)

(Position Category: Wildland Fire)

REQUIRED TRAINING

Intermediate Wildland Fire Behavior (S-290)

Annual Fireline Safety Refresher (RT-130)

REQUIRED EXPERIENCE

Satisfactory performance as a Firefighter Type 2 (FFT2)

+

Successful position performance as a Fire Effects Monitor (FEMO) on a wildland fire incident

PHYSICAL FITNESS LEVEL

Moderate

THESE POSITIONS MAINTAIN CURRENCY FOR FEMO

Long Term Fire Analyst (LTAN)

Fire Behavior Analyst (FBAN)

Field Observer (FOBS)

FEMO MAINTAINS CURRENCY FOR THESE POSITIONS

Firefighter Type 2 (FFT2)

OTHER TRAINING WHICH SUPPORTS DEVELOPMENT OF KNOWLEDGE AND SKILLS

Introduction to Fire Effects (RX-310)

Field Observer (S-244)

Training Specialist (TNSP)

(Position Category: Incident Support)

REQUIRED TRAINING

None

REQUIRED EXPERIENCE

Successful position performance as a Training Specialist (TNSP)

PHYSICAL FITNESS LEVEL

None Required

THESE POSITIONS MAINTAIN CURRENCY FOR TNSP

None

TNSP MAINTAINS CURRENCY FOR THESE POSITIONS

None

OTHER TRAINING WHICH SUPPORTS DEVELOPMENT OF KNOWLEDGE AND SKILLS

Intermediate ICS (I-300)

Human Factors in the Wildland Fire Service (L-180)

Incident Training Specialist (S-445)

Basic Wildland Fire Orientation (S-110)

Human Resource Specialist (HRSP)

(Position Category: Incident Support)

REQUIRED TRAINING

Human Resource Specialist (S-340)

Human Resource Specialist Refresher Workshop (RT-340) (Triennial)

REQUIRED EXPERIENCE

Successful position performance as a Human Resource Specialist (HRSP)

PHYSICAL FITNESS LEVEL

None Required

THESE POSITIONS MAINTAIN CURRENCY FOR HRSP

None

HRSP MAINTAINS CURRENCY FOR THESE POSITIONS

None

OTHER TRAINING WHICH SUPPORTS DEVELOPMENT OF KNOWLEDGE AND SKILLS

Human Factors in the Wildland Fire Service (L-180)

Introduction to ICS (I-100)

Interagency Incident Business Management (S-260)

Basic Wildland Fire Orientation (S-110)

Interagency Resource Representative (IARR)*

(Position Category: ICS)

REQUIRED TRAINING

None

REQUIRED EXPERIENCE

Agency established

PHYSICAL FITNESS LEVEL

None Required

THESE POSITIONS MAINTAIN CURRENCY FOR IARR

None

IARR MAINTAINS CURRENCY FOR THESE POSITIONS

Crew Representative (CREP)

OTHER TRAINING WHICH SUPPORTS DEVELOPMENT OF KNOWLEDGE AND SKILLS

Human Factors in the Wildland Fire Service (L-180)

** Designates agency established position qualifications*

This page intentionally left blank.

DRAFT

QUALIFICATIONS FOR LOGISTICS POSITIONS

DRAFT

Assistant Area Commander, Logistics (ACLCL)

(Position Category: ICS)

REQUIRED TRAINING

Area Command (S-620)

REQUIRED EXPERIENCE

Satisfactory performance as an Incident Commander or General Staff on a National Type 1 Incident Management Team

+

Successful position performance as an Assistant Area Commander, Logistics (ACLCL)

PHYSICAL FITNESS LEVEL

None Required

THESE POSITIONS MAINTAIN CURRENCY FOR ACLCL

Area Commander (ACDR)

Assistant Area Commander, Planning (ACPC)

Incident Commander Type 1 (ICT1)

ACLCL MAINTAINS CURRENCY FOR THESE POSITIONS

Assistant Area Commander, Planning (ACPC)

Incident Commander Type 1 (ICT1)

Logistics Section Chief Type 1 (LSC1)

Logistics Section Chief Type 2 (LSC2)

Operations Section Chief Type 1 (OSC1)

OTHER TRAINING WHICH SUPPORTS DEVELOPMENT OF KNOWLEDGE AND SKILLS

None

Logistics Section Chief Type 1 (LSC1)

(Position Category: ICS)

REQUIRED TRAINING

Advanced Incident Management (S-520) or Complex Incident Management Course (CIMC)

REQUIRED EXPERIENCE

Satisfactory performance as a Logistics Section Chief Type 2 (LSC2)

+

Successful position performance as a Logistics Section Chief Type 1 (LSC1)

PHYSICAL FITNESS LEVEL

None Required

THESE POSITIONS MAINTAIN CURRENCY FOR LSC1

Assistant Area Commander, Logistics (ACLCL)

Service Branch Director (SVBD)

Support Branch Director (SUBD)

Logistics Section Chief Type 2 (LSC2)

LSC1 MAINTAINS CURRENCY FOR THESE POSITIONS

Incident Commander Type 1 (ICT1)

Logistics Section Chief Type 2 (LSC2)

Facilities Unit Leader (FACL)

Base/Camp Manager (BCMG)

Ground Support Unit Leader (GSUL)

Equipment Manager (EQPM)

OTHER TRAINING WHICH SUPPORTS DEVELOPMENT OF KNOWLEDGE AND SKILLS

None

Logistics Section Chief Type 2 (LSC2)

(Position Category: ICS)

REQUIRED TRAINING

Command and General Staff (S-420)

REQUIRED EXPERIENCE

Satisfactory performance as a Facilities Unit Leader (FACL)

+

Satisfactory performance as a Ground Support Unit Leader (GSUL)

+

Successful position performance as a Logistics Section Chief Type 2 (LSC2)

OR

Satisfactory performance as a Facilities Unit Leader (FACL)

+

Satisfactory performance as a Supply Unit Leader (SPUL)

+

Successful position performance as a Logistics Section Chief Type 2 (LSC2)

PHYSICAL FITNESS LEVEL

None Required

THESE POSITIONS MAINTAIN CURRENCY FOR LSC2

Assistant Area Commander, Logistics (ACLCL)

Incident Commander Type 1 (ICT1)

Incident Commander Type 2 (ICT2)

Logistics Section Chief Type 1 (LSC1)

Service Branch Director (SVBD)

Support Branch Director (SUBD)

Facilities Unit Leader (FACL)

Ground Support Unit Leader (GSUL)

Supply Unit Leader (SPUL)

LSC2 MAINTAINS CURRENCY FOR THESE POSITIONS

Incident Commander Type 2 (ICT2)

Logistics Section Chief Type 1 (LSC1)

Facilities Unit Leader (FACL)

Base/Camp Manager (BCMG)

Ground Support Unit Leader (GSUL)

Equipment Manager (EQPM)

Supply Unit Leader (SPUL)

Receiving/Distribution Manager (RCDM)

OTHER TRAINING WHICH SUPPORTS DEVELOPMENT OF KNOWLEDGE AND SKILLS

Advanced ICS (I-400)

Organizational Leadership in the Fire Service (L-480)

Logistics Section Chief (S-450)

Service Branch Director (SVBD)*

(Position Category: ICS)

REQUIRED TRAINING

None

REQUIRED EXPERIENCE

Satisfactory performance as a Logistics Section Chief Type 2 (LSC2)

PHYSICAL FITNESS LEVEL

None Required

THESE POSITIONS MAINTAIN CURRENCY FOR SVBD

Logistics Section Chief Type 2 (LSC2)

Support Branch Director (SUBD)

Communications Unit Leader (COML)

Food Unit Leader (FDUL)

Medical Unit Leader (MEDL)

SVDB MAINTAINS CURRENCY FOR THESE POSITIONS

Logistics Section Chief Type 1 (LSC1)

Logistics Section Chief Type 2 (LSC2)

Support Branch Director (SUBD)

Ground Support Unit Leader (GSUL)

Equipment Manager (EQPM)

Supply Unit Leader (SPUL)

Ordering Manager (ORDM)

Receiving/Distribution Manager (RCDM)

Base/Camp Manager (BCMG)

OTHER TRAINING WHICH SUPPORTS DEVELOPMENT OF KNOWLEDGE AND SKILLS

None

** Designates agency established position qualifications*

Support Branch Director (SUBD)*

(Position Category: ICS)

REQUIRED TRAINING

None

REQUIRED EXPERIENCE

Satisfactory performance as a Logistics Section Chief Type 2 (LSC2)

PHYSICAL FITNESS LEVEL

None Required

THESE POSITIONS MAINTAIN CURRENCY FOR SUBD

Logistics Section Chief Type 2 (LSC2)

Service Branch Director (SVBD)

Facilities Unit Leader (FACL)

Ground Support Unit Leader (GSUL)

Supply Unit Leader (SPUL)

SUBD MAINTAINS CURRENCY FOR THESE POSITIONS

Logistics Section Chief Type 1 (LSC1)

Logistics Section Chief Type 2 (LSC2)

Service Branch Director (SVBD)

Ground Support Unit Leader (GSUL)

Supply Unit Leader (SPUL)

Equipment Manager (EQPM)

Receiving/Distribution Manager (RCDM)

Ordering Manager (ORDM)

Base/Camp Manager (BCMG)

OTHER TRAINING WHICH SUPPORTS DEVELOPMENT OF KNOWLEDGE AND SKILLS

None

** Designates agency established position qualifications*

Medical Unit Leader (MEDL)

(Position Category: ICS)

REQUIRED TRAINING

Medical Unit Leader (S-359)

REQUIRED EXPERIENCE

Prior or current certification as an Emergency Medical Technician (EMT) or equivalent

+

Successful position performance as a Medical Unit Leader (MEDL)

PHYSICAL FITNESS LEVEL

None Required

THESE POSITIONS MAINTAIN CURRENCY FOR MEDL

None

MEDL MAINTAINS CURRENCY FOR THESE POSITIONS

Service Branch Director (SVBD)

OTHER TRAINING WHICH SUPPORTS DEVELOPMENT OF KNOWLEDGE AND SKILLS

Intermediate ICS (I-300)

Fireline Leadership (L-380)

Basic Wildland Fire Orientation (S-110)

Communications Unit Leader (COML)

(Position Category: ICS)

REQUIRED TRAINING

None

REQUIRED EXPERIENCE

Satisfactory performance as an Incident Communications Technician (COMT)

+

Satisfactory performance as an Incident Communications Center Manager (INCM)

+

Successful position performance as a Communications Unit Leader (COML)

PHYSICAL FITNESS LEVEL

None Required

THESE POSITIONS MAINTAIN CURRENCY FOR COML

Incident Communications Center Manager (INCM)

Incident Communications Technician (COMT)

MEDL MAINTAINS CURRENCY FOR THESE POSITIONS

Service Branch Director (SVBD)

Incident Communications Center Manager (INCM)

Radio Operator (RADO)

Incident Communications Technician (COMT)

OTHER TRAINING WHICH SUPPORTS DEVELOPMENT OF KNOWLEDGE AND SKILLS

Intermediate ICS (I-300)

Fireline Leadership (L-380)

Communications Unit Leader (S-358)

Incident Communications Technician (COMT)

(Position Category: ICS)

REQUIRED TRAINING

Annual Fireline Safety Refresher (RT-130)

REQUIRED EXPERIENCE

Successful position performance as an Incident Communications Technician (COMT)

PHYSICAL FITNESS LEVEL

Light

THESE POSITIONS MAINTAIN CURRENCY FOR COMT

Communications Unit Leader (COML)

COMT MAINTAINS CURRENCY FOR THESE POSITIONS

None

OTHER TRAINING WHICH SUPPORTS DEVELOPMENT OF KNOWLEDGE AND SKILLS

Basic Firefighter Training:

Introduction to ICS (I-100)

Human Factors in the Wildland Fire Service (L-180)

Introduction to Wildland Fire Behavior (S-190)

Firefighting Training (S-130)

Incident Communications Technician (S-258)

Incident Communications Center Manager (INCM)

(Position Category: ICS)

REQUIRED TRAINING

None

REQUIRED EXPERIENCE

Satisfactory performance as a Radio Operator ([RADO](#))

+

Successful position performance as an Incident Communications Center Manager (INCM)

PHYSICAL FITNESS LEVEL

[None Required](#)

THESE POSITIONS MAINTAIN CURRENCY FOR INCM

Communications Unit Leader ([COML](#))

Expanded Dispatch Recorder ([EDRC](#))

INCM MAINTAINS CURRENCY FOR THESE POSITIONS

Radio Operator ([RADO](#))

OTHER TRAINING WHICH SUPPORTS DEVELOPMENT OF KNOWLEDGE AND SKILLS

Basic ICS (I-200)

Incident Communications Center Manager (J-257)

Interagency Incident Business Management (S-260)

Basic Wildland Fire Orientation (S-110)

Radio Operator (RADO)

(Position Category: Incident Support)

REQUIRED TRAINING

None

REQUIRED EXPERIENCE

Successful position performance as a Radio Operator (RADO)

PHYSICAL FITNESS LEVEL

None Required

THESE POSITIONS MAINTAIN CURRENCY FOR RADO

Initial Attack Dispatcher (**IADP**)

Communications Unit Leader (**COML**)

Incident Communications Center Manager (**INCM**)

Aircraft Base Radio Operator (**ABRO**)

RADO MAINTAINS CURRENCY FOR THESE POSITIONS

None

OTHER TRAINING WHICH SUPPORTS DEVELOPMENT OF KNOWLEDGE AND SKILLS

Basic Firefighter Training:

Introduction to ICS (I-100)

Human Factors in the Wildland Fire Service (L-180)

Introduction to Wildland Fire Behavior (S-190)

Firefighting Training (S-130)

Radio Operator (J-158)

Food Unit Leader (FDUL)

(Position Category: ICS)

REQUIRED TRAINING

Food Unit Leader (S-357)

REQUIRED EXPERIENCE

Successful position performance as a Food Unit Leader (FDUL)

PHYSICAL FITNESS LEVEL

None Required

THESE POSITIONS MAINTAIN CURRENCY FOR FDUL

None

FDUL MAINTAINS CURRENCY FOR THESE POSITIONS

Service Branch Director (SVBD)

OTHER TRAINING WHICH SUPPORTS DEVELOPMENT OF KNOWLEDGE AND SKILLS

Intermediate ICS (I-300)

Fireline Leadership (L-380)

Basic Wildland Fire Orientation (S-110)

Supply Unit Leader (SPUL)

(Position Category: ICS)

REQUIRED TRAINING

None

REQUIRED EXPERIENCE

Satisfactory performance as an Ordering Manager (ORDM)

+

Satisfactory performance as a Receiving/Distribution Manager (RCDM)

+

Successful position performance as a Supply Unit Leader (SPUL)

PHYSICAL FITNESS LEVEL

None Required

THESE POSITIONS MAINTAIN CURRENCY FOR SPUL

Logistics Section Chief Type 2 (LSC2)

Service Branch Director (SVBD)

Support Branch Director (SUBD)

Ordering Manager (ORDM)

Receiving/Distribution Manager (RCDM)

SPUL MAINTAINS CURRENCY FOR THESE POSITIONS

Logistics Section Chief Type 2 (LSC2)

Ordering Manager (ORDM)

Receiving/Distribution Manager (RCDM)

OTHER TRAINING WHICH SUPPORTS DEVELOPMENT OF KNOWLEDGE AND SKILLS

Intermediate ICS (I-300)

Fireline Leadership (L-380)

Supply Unit Leader (S-356)

Ordering Manager (ORDM)

(Position Category: ICS)

REQUIRED TRAINING

None

REQUIRED EXPERIENCE

Successful position performance as an Ordering Manager (ORDM)

PHYSICAL FITNESS LEVEL

None Required

THESE POSITIONS MAINTAIN CURRENCY FOR ORDM

Logistics Section Chief Type 2 (LSC2)

Service Branch Director (SVBD)

Support Branch Director (SUBD)

Receiving/Distribution Manager (RCDM)

Supply Unit Leader (SPUL)

ORDM MAINTAINS CURRENCY FOR THESE POSITIONS

Supply Unit Leader (SPUL)

Receiving/Distribution Manager (RCDM)

Expanded Dispatch Recorder (EDRC)

OTHER TRAINING WHICH SUPPORTS DEVELOPMENT OF KNOWLEDGE AND SKILLS

Basic ICS (I-200)

Ordering Manager (J-252)

Interagency Incident Business Management (S-260)

Basic Wildland Fire Orientation (S-110)

Receiving/Distribution Manager (RCDM)

(Position Category: ICS)

REQUIRED TRAINING

None

REQUIRED EXPERIENCE

Successful position performance as a Receiving/Distribution Manager (RCDM)

PHYSICAL FITNESS LEVEL

None Required

THESE POSITIONS MAINTAIN CURRENCY FOR RCDM

Logistics Section Chief Type 2 (LSC2)

Service Branch Director (SVBD)

Support Branch Director (SUBD)

Ordering Manager (ORDM)

Supply Unit Leader (SPUL)

RCDM MAINTAINS CURRENCY FOR THESE POSITIONS

Ordering Manager (ORDM)

Supply Unit Leader (SPUL)

Facilities Unit Leader (FACL)

OTHER TRAINING WHICH SUPPORTS DEVELOPMENT OF KNOWLEDGE AND SKILLS

Basic ICS (I-200)

Receiving and Distribution Manager (J-253)

Human Factors in the Wildland Fire Service (L-180)

Interagency Incident Business Management (S-260)

Basic Wildland Fire Orientation (S-110)

Facilities Unit Leader (FACL)

(Position Category: ICS)

REQUIRED TRAINING

None

REQUIRED EXPERIENCE

Satisfactory performance as a Base/Camp Manager (**BCMG**)

+

Successful position performance as a Facilities Unit Leader (FACL)

PHYSICAL FITNESS LEVEL

None Required

THESE POSITIONS MAINTAIN CURRENCY FOR FALC

Logistics Section Chief Type 1 (**LSC1**)

Logistics Section Chief Type 2 (**LSC2**)

Base/Camp Manager (**BCMG**)

Receiving/Distribution Manager (**RCDM**)

FACL MAINTAINS CURRENCY FOR THESE POSITIONS

Logistics Section Chief Type 2 (**LSC2**)

Base/Camp Manager (**BCMG**)

OTHER TRAINING WHICH SUPPORTS DEVELOPMENT OF KNOWLEDGE AND SKILLS

Intermediate ICS (I-300)

Fireline Leadership (L-380)

Facilities Unit Leader (S-354)

Base/Camp Manager (BCMG)

(Position Category: ICS)

REQUIRED TRAINING

None

REQUIRED EXPERIENCE

Successful position performance as a Base/Camp Manager (BCMG)

PHYSICAL FITNESS LEVEL

Light

THESE POSITIONS MAINTAIN CURRENCY FOR BCMG

Logistics Section Chief Type 1 (LSC1)

Logistics Section Chief Type 2 (LSC2)

Service Branch Director (SVBD)

Support Branch Director (SUBD)

Facilities Unit Leader (FACL)

BCMG MAINTAINS CURRENCY FOR THESE POSITIONS

Facilities Unit Leader (FACL)

OTHER TRAINING WHICH SUPPORTS DEVELOPMENT OF KNOWLEDGE AND SKILLS

Basic ICS (I-200)

Base/Camp Manager (J-254)

Human Factors in the Wildland Fire Service (L-180)

Interagency Incident Business Management (S-260)

Basic Wildland Fire Orientation (S-110)

Ground Support Unit Leader (GSUL)

(Position Category: ICS)

REQUIRED TRAINING

None

REQUIRED EXPERIENCE

Satisfactory performance as an Equipment Manager (EQPM)

+

Successful position performance as a Ground Support Unit Leader (GSUL)

PHYSICAL FITNESS LEVEL

None Required

THESE POSITIONS MAINTAIN CURRENCY FOR GSUL

Logistics Section Chief Type 1 (LSC1)

Logistics Section Chief Type 2 (LSC2)

Service Branch Director (SVBD)

Support Branch Director (SUBD)

Equipment Manager (EQPM)

GSUL MAINTAINS CURRENCY FOR THESE POSITIONS

Logistics Section Chief Type 2 (LSC2)

Equipment Manager (EQPM)

OTHER TRAINING WHICH SUPPORTS DEVELOPMENT OF KNOWLEDGE AND SKILLS

Intermediate ICS (I-300)

Fireline Leadership (L-380)

Ground Support Unit Leader (S-355)

Equipment Manager (EQPM)

(Position Category: ICS)

REQUIRED TRAINING

None

REQUIRED EXPERIENCE

Successful position performance as an Equipment Manager (EQPM)

PHYSICAL FITNESS LEVEL

None Required

THESE POSITIONS MAINTAIN CURRENCY FOR EQPM

Logistics Section Chief Type 1 (LSC1)

Logistics Section Chief Type 2 (LSC2)

Service Branch Director (SVBD)

Support Branch Director (SUBD)

Ground Support Unit Leader (GSUL)

EQPM MAINTAINS CURRENCY FOR THESE POSITIONS

Ground Support Unit Leader (GSUL)

OTHER TRAINING WHICH SUPPORTS DEVELOPMENT OF KNOWLEDGE AND SKILLS

Basic ICS (I-200)

Equipment Manager (J-255)

Human Factors in the Wildland Fire Service (L-180)

Basic Wildland Fire Orientation (S-110)

Interagency Incident Business Management (S-260)

Security Manager (SECM)

(Position Category: ICS)

REQUIRED TRAINING

None

REQUIRED EXPERIENCE

Successful position performance as a Security Manager (SECM)

PHYSICAL FITNESS LEVEL

None Required

THESE POSITIONS MAINTAIN CURRENCY FOR SECM

None

SECM MAINTAINS CURRENCY FOR THESE POSITIONS

None

OTHER TRAINING WHICH SUPPORTS DEVELOPMENT OF KNOWLEDGE AND SKILLS

Basic ICS (I-200)

Security Manager (J-259)

Human Factors in the Wildland Fire Service (L-180)

Interagency Incident Business Management (S-260)

Basic Wildland Fire Orientation (S-110)

**QUALIFICATIONS FOR
FINANCE/ADMINISTRATION POSITIONS**

DRAFT

Finance/Administration Section Chief Type 1 (FSC1)

(Position Category: ICS)

REQUIRED TRAINING

Advanced Incident Management (S-520) or Complex Incident Management Course (CIMC)

REQUIRED EXPERIENCE

Satisfactory performance as a Finance/Administration Section Chief Type 2 (FSC2)

+

Successful position performance as a Finance/Administration Section Chief Type 1 (FSC1)

PHYSICAL FITNESS LEVEL

None Required

THESE POSITIONS MAINTAIN CURRENCY FOR FSC1

Incident Commander Type 1 (ICT1)

Incident Business Advisor Type 1 (IBA1)

Finance/Administration Section Chief Type 2 (FSC2)

FSC1 MAINTAINS CURRENCY FOR THESE POSITIONS

Incident Commander Type 1 (ICT1)

Finance/Administration Section Chief Type 2 (FSC2)

Incident Business Advisor Type 2 (IBA2)

Time Unit Leader (TIME)

Cost Unit Leader (COST)

Procurement Unit Leader (PROC)

Equipment Time Recorder (EQTR)

Personnel Time Recorder (PTRC)

OTHER TRAINING WHICH SUPPORTS DEVELOPMENT OF KNOWLEDGE AND SKILLS

None

Finance/Administration Section Chief Type 2 (FSC2)

(Position Category: ICS)

REQUIRED TRAINING

Command and General Staff (S-420)

REQUIRED EXPERIENCE

Satisfactory performance as a Time Unit Leader (**TIME**)

+

Satisfactory performance as a Procurement Unit Leader (**PROC**)

+

Successful position performance as a Finance/Administration Section Chief Type 2 (FSC2)

OR

Satisfactory performance as a Time Unit Leader (**TIME**)

+

Satisfactory performance as a Cost Unit Leader (**COST**)

+

Successful position performance as a Finance/Administration Section Chief Type 2 (FSC2)

PHYSICAL FITNESS LEVEL

None Required

THESE POSITIONS MAINTAIN CURRENCY FOR FSC2

Incident Commander Type 1 (**ICT1**)

Incident Commander Type 2 (**ICT2**)

Finance/Administration Section Chief Type 1 (**FSC1**)

Incident Business Advisor Type 1 (**IBA1**)

Incident Business Advisor Type 2 (**IBA2**)

Compensation/Claims Unit Leader (**COMP**)

Cost Unit Leader (**COST**)

Procurement Unit Leader (**PROC**)

Time Unit Leader (**TIME**)

FSC2 MAINTAINS CURRENCY FOR THESE POSITIONS

Incident Commander Type 2 (**ICT2**)

Finance/Administration Section Chief Type 1 (**FSC1**)

Incident Business Advisor Type 2 (**IBA2**)

Time Unit Leader (**TIME**)

Cost Unit Leader (**COST**)

Procurement Unit Leader (**PROC**)

Equipment Time Recorder (**EQTR**)

Personnel Time Recorder (**PTRC**)

OTHER TRAINING WHICH SUPPORTS DEVELOPMENT OF KNOWLEDGE AND SKILLS

Advanced ICS (I-400)

Organizational Leadership in the Fire Service (L-480)

Finance/Administration Section Chief (S-460)

Time Unit Leader (TIME)

(Position Category: ICS)

REQUIRED TRAINING

None

REQUIRED EXPERIENCE

Satisfactory performance as a Personnel Time Recorder (PTRC)

+

Successful position performance as a Time Unit Leader (TIME)

PHYSICAL FITNESS LEVEL

None Required

THESE POSITIONS MAINTAIN CURRENCY FOR TIME

Finance/Administration Section Chief Type 1 (FSC1)

Finance/Administration Section Chief Type 2 (FSC2)

Equipment Time Recorder (EQTR)

Personnel Time Recorder (PTRC)

TIME MAINTAINS CURRENCY FOR THESE POSITIONS

Finance/Administration Section Chief Type 2 (FSC2)

Personnel Time Recorder (PTRC)

OTHER TRAINING WHICH SUPPORTS DEVELOPMENT OF KNOWLEDGE AND SKILLS

Intermediate ICS (I-300)

Fireline Leadership (L-380)

Finance/Administration Unit Leader (S-360)

Personnel Time Recorder (PTRC)

(Position Category: ICS)

REQUIRED TRAINING

None

REQUIRED EXPERIENCE

Successful position performance as a Personnel Time Recorder (PTRC)

PHYSICAL FITNESS LEVEL

None Required

THESE POSITIONS MAINTAIN CURRENCY FOR PTRC

Finance/Administration Section Chief Type 1 (FSC1)

Finance/Administration Section Chief Type 2 (FSC2)

Equipment Time Recorder (EQTR)

Time Unit Leader (TIME)

PTRC MAINTAINS CURRENCY FOR THESE POSITIONS

Time Unit Leader (TIME)

Procurement Unit Leader (PROC)

Equipment Time Recorder (EQTR)

OTHER TRAINING WHICH SUPPORTS DEVELOPMENT OF KNOWLEDGE AND SKILLS

Incident Base Automation (I-Suite)

Introduction to ICS (I-100)

Human Factors in the Wildland Fire Service (L-180)

Applied Interagency Incident Business Management (S-261)

Interagency Incident Business Management (S-260)

Basic Wildland Fire Orientation (S-110)

Cost Unit Leader (COST)

(Position Category: ICS)

REQUIRED TRAINING

None

REQUIRED EXPERIENCE

Successful position performance as a Cost Unit Leader (COST)

PHYSICAL FITNESS LEVEL

None Required

THESE POSITIONS MAINTAIN CURRENCY FOR COST

Finance/Administration Section Chief Type 1 (FSC1)

Finance/Administration Section Chief Type 2 (FSC2)

Equipment Time Recorder (EQTR)

COST MAINTAINS CURRENCY FOR THESE POSITIONS

Finance/Administration Section Chief Type 2 (FSC2)

OTHER TRAINING WHICH SUPPORTS DEVELOPMENT OF KNOWLEDGE AND SKILLS

Incident Base Automation (I-Suite)

Intermediate ICS (I-300)

Fireline Leadership (L-380)

Finance/Administration Unit Leader (S-360)

Applied Interagency Incident Business Management (S-261)

Interagency Incident Business Management (S-260)

Basic Wildland Fire Orientation (S-110)

Compensation/Claims Unit Leader (COMP)

(Position Category: ICS)

REQUIRED TRAINING

None

REQUIRED EXPERIENCE

Satisfactory performance as a Compensation-for Injury Specialist (INJR)

+

Satisfactory performance as a Claims Specialist (CLMS)

+

Successful position performance as a Compensation/Claims Unit Leader (COMP)

PHYSICAL FITNESS LEVEL

None Required

THESE POSITIONS MAINTAIN CURRENCY FOR COMP

Finance/Administration Section Chief Type 2 (FSC2)

Claims Specialist (CLMS)

Compensation-for-Injury Specialist (INJR)

COMP MAINTAINS CURRENCY FOR THESE POSITIONS

Finance/Administration Section Chief Type 2 (FSC2)

Claims Specialist (CLMS)

Compensation-for-Injury Specialist (INJR)

OTHER TRAINING WHICH SUPPORTS DEVELOPMENT OF KNOWLEDGE AND SKILLS

Intermediate ICS (I-300)

Fireline Leadership (L-380)

Finance/Administration Unit Leader (S-360)

Compensation-For-Injury Specialist (INJR)

(Position Category: ICS)

REQUIRED TRAINING

None

REQUIRED EXPERIENCE

Successful position performance as a Compensation-for-Injury Specialist (INJR)

PHYSICAL FITNESS LEVEL

None Required

THESE POSITIONS MAINTAIN CURRENCY FOR INJR

Claims Specialist ([CLMS](#))

Compensation/Claims Unit Leader ([COMP](#))

INJR MAINTAINS CURRENCY FOR THESE POSITIONS

Claims Specialist ([CLMS](#))

OTHER TRAINING WHICH SUPPORTS DEVELOPMENT OF KNOWLEDGE AND SKILLS

Introduction to ICS (I-100)

Human Factors in the Wildland Fire Service (L-180)

Applied Interagency Incident Business Management (S-261)

Interagency Incident Business Management (S-260)

Basic Wildland Fire Orientation (S-110)

Claims Specialist (CLMS)

(Position Category: ICS)

REQUIRED TRAINING

None

REQUIRED EXPERIENCE

Successful position performance as a Claims Specialist (CLMS)

PHYSICAL FITNESS LEVEL

None Required

THESE POSITIONS MAINTAIN CURRENCY FOR CLMS

Compensation/Claims Unit Leader ([COMP](#))

Compensation-for-Injury Specialist ([INJR](#))

CLMS MAINTAINS CURRENCY FOR THESE POSITIONS

Compensation-for-Injury Specialist ([INJR](#))

OTHER TRAINING WHICH SUPPORTS DEVELOPMENT OF KNOWLEDGE AND SKILLS

Introduction to ICS (I-100)

Human Factors in the Wildland Fire Service (L-180)

Applied Interagency Incident Business Management (S-261)

Interagency Incident Business Management (S-260)

Basic Wildland Fire Orientation (S-110)

Procurement Unit Leader (PROC)

(Position Category: ICS)

REQUIRED TRAINING

None

REQUIRED EXPERIENCE

Satisfactory performance as an Equipment Time Recorder (EQTR)

+

Successful position performance as a Procurement Unit Leader (PROC)

PHYSICAL FITNESS LEVEL

None Required

THESE POSITIONS MAINTAIN CURRENCY FOR PROC

Finance/Administration Section Chief Type 1 (FSC1)

Finance/Administration Section Chief Type 2 (FSC2)

Equipment Time Recorder (EQTR)

Personnel Time Recorder (PTRC)

PROC MAINTAINS CURRENCY FOR THESE POSITIONS

Finance/Administration Section Chief Type 2 (FSC2)

Equipment Time Recorder (EQTR)

OTHER TRAINING WHICH SUPPORTS DEVELOPMENT OF KNOWLEDGE AND SKILLS

Intermediate ICS (I-300)

Fireline Leadership (L-380)

Finance/Administration Unit Leader (S-360)

Equipment Time Recorder (EQTR)

(Position Category: ICS)

REQUIRED TRAINING

None

REQUIRED EXPERIENCE

Successful position performance as an Equipment Time Recorder (EQTR)

PHYSICAL FITNESS LEVEL

None Required

THESE POSITIONS MAINTAIN CURRENCY FOR EQTR

Finance/Administration Section Chief Type 1 (FSC1)

Finance/Administration Section Chief Type 2 (FSC2)

Personnel Time Recorder (PTRC)

Procurement Unit Leader (PROC)

EQTR MAINTAINS CURRENCY FOR THESE POSITIONS

Personnel Time Recorder (PTRC)

Procurement Unit Leader (PROC)

Time Unit Leader (TIME)

Cost Unit Leader (COST)

OTHER TRAINING WHICH SUPPORTS DEVELOPMENT OF KNOWLEDGE AND SKILLS

Introduction to ICS (I-100)

Human Factors in the Wildland Fire Service (L-180)

Applied Interagency Incident Business Management (S-261)

Interagency Incident Business Management (S-260)

Basic Wildland Fire Orientation (S-110)

Commissary Manager (CMSY)

(Position Category: ICS)

REQUIRED TRAINING

None

REQUIRED EXPERIENCE

Successful position performance as a Commissary Manager (CMSY)

PHYSICAL FITNESS LEVEL

None Required

THESE POSITIONS MAINTAIN CURRENCY FOR CMSY

Time Unit Leader (**TIME**)

Personnel Time Recorder (**PTRC**)

CMSY MAINTAINS CURRENCY FOR THESE POSITIONS

None

OTHER TRAINING WHICH SUPPORTS DEVELOPMENT OF KNOWLEDGE AND SKILLS

Introduction to ICS (I-100)

Human Factors in the Wildland Fire Service (L-180)

Applied Interagency Incident Business Management (S-261)

Interagency Incident Business Management (S-260)

Basic Wildland Fire Orientation (S-110)

Incident Business Advisor Type 1 (IBA1)

(Position Category: Incident Support)

REQUIRED TRAINING

None

REQUIRED EXPERIENCE

Satisfactory performance as an Incident Business Advisor Type 2 (IBA2)

+

Successful position performance as an Incident Business Advisor Type 1 (IBA1)

PHYSICAL FITNESS LEVEL

None Required

THESE POSITIONS MAINTAIN CURRENCY FOR IBA1

Finance/Administration Section Chief Type 1 (FSC1)

Incident Business Advisor Type 2 (IBA2)

IBA1 MAINTAINS CURRENCY FOR THESE POSITIONS

Finance/Administration Section Chief Type 1 (FSC1)

Finance/Administration Section Chief Type 2 (FSC2)

Incident Business Advisor Type 2 (IBA2)

OTHER TRAINING WHICH SUPPORTS DEVELOPMENT OF KNOWLEDGE AND SKILLS

Advanced ICS (I-400)

Incident Business Advisor Type 2 (IBA2)

(Position Category: Incident Support)

REQUIRED TRAINING

None

REQUIRED EXPERIENCE

Successful position performance as an Incident Business Advisor Type 2 (IBA2)

PHYSICAL FITNESS LEVEL

None Required

THESE POSITIONS MAINTAIN CURRENCY FOR IBA2

Finance/Administration Section Chief Type 1 (FSC1)

Finance/Administration Section Chief Type 2 (FSC2)

Incident Business Advisor Type 1 (IBA1)

IBA2 MAINTAINS CURRENCY FOR THESE POSITIONS

Finance/Administration Section Chief Type 2 (FSC2)

OTHER TRAINING WHICH SUPPORTS DEVELOPMENT OF KNOWLEDGE AND SKILLS

Intermediate ICS (I-300)

Command and General Staff (S-420)

Finance/Administration Unit Leader (S-360)

Incident Business Advisor (S-481)

QUALIFICATIONS FOR DISPATCH POSITIONS

DRAFT

Expanded Dispatch Coordinator (CORD)

(Position Category: Incident Support)

REQUIRED TRAINING

None

REQUIRED EXPERIENCE

Satisfactory performance as an Expanded Dispatch Supervisory Dispatcher (EDSP)

+

Successful position performance as an Expanded Dispatch Coordinator (CORD)

PHYSICAL FITNESS LEVEL

None Required

THESE POSITIONS MAINTAIN CURRENCY FOR CORD

Expanded Dispatch Supervisory Dispatcher (EDSP)

CORD MAINTAINS CURRENCY FOR THESE POSITIONS

Expanded Dispatch Supervisory Dispatcher (EDSP)

Expanded Dispatch Support Dispatcher (EDSD)

Expanded Dispatch Recorder (EDRC)

OTHER TRAINING WHICH SUPPORTS DEVELOPMENT OF KNOWLEDGE AND SKILLS

Advanced ICS (I-400)

Organizational Leadership in the Fire Service (L-480)

Expanded Dispatch Supervisory Dispatcher (EDSP)

(Position Category: Incident Support)

REQUIRED TRAINING

None

REQUIRED EXPERIENCE

Satisfactory performance as an Expanded Dispatch Support Dispatcher (**EDSD**) in all four functional areas (Overhead, Crews, Equipment, and Supplies)

+

Successful position performance as an Expanded Dispatch Supervisory Dispatcher (**EDSP**)

PHYSICAL FITNESS LEVEL

None Required

THESE POSITIONS MAINTAIN CURRENCY FOR EDSP

Expanded Dispatch Support Dispatcher (**EDSD**)

Expanded Dispatch Coordinator (**CORD**)

EDSP MAINTAINS CURRENCY FOR THESE POSITIONS

Expanded Dispatch Support Dispatcher (**EDSD**)

Expanded Dispatch Recorder (**EDRC**)

OTHER TRAINING WHICH SUPPORTS DEVELOPMENT OF KNOWLEDGE AND SKILLS

Aviation Conference and Education (ACE) Module A-207

Supervisory Dispatcher (D-510)

Intermediate ICS (I-300)

Fireline Leadership (L-380)

Expanded Dispatch Support Dispatcher (EDSD)

(Position Category: Incident Support)

REQUIRED TRAINING

None

REQUIRED EXPERIENCE

Satisfactory performance as an Expanded Dispatch Recorder ([EDRC](#))

+

Successful position performance as an Expanded Dispatch Support Dispatcher (EDSD)

PHYSICAL FITNESS LEVEL

[None Required](#)

THESE POSITIONS MAINTAIN CURRENCY FOR EDSD

Expanded Dispatch Recorder ([EDRC](#))

Expanded Dispatch Coordinator ([CORD](#))

Expanded Dispatch Supervisory Dispatcher ([EDSP](#))

EDSD MAINTAINS CURRENCY FOR THESE POSITIONS

Expanded Dispatch Recorder ([EDRC](#))

Expanded Dispatch Supervisory Dispatcher ([EDSP](#))

OTHER TRAINING WHICH SUPPORTS DEVELOPMENT OF KNOWLEDGE AND SKILLS

Expanded Dispatch Support Dispatcher (D-310)

Basic ICS (I-200)

Interagency Incident Business Management (S-260)

Expanded Dispatch Recorder (EDRC)

(Position Category: Incident Support)

REQUIRED TRAINING

None

REQUIRED EXPERIENCE

Successful position performance as an Expanded Dispatch Recorder (EDRC)

PHYSICAL FITNESS LEVEL

None Required

THESE POSITIONS MAINTAIN CURRENCY FOR EDRC

Initial Attack Dispatcher ([IADP](#))

Aircraft Dispatcher ([ACDP](#))

Expanded Dispatch Coordinator ([CORD](#))

Expanded Dispatch Supervisory Dispatcher ([EDSP](#))

Expanded Dispatch Recorder ([EDRC](#))

Ordering Manager ([ORDM](#))

EDRC MAINTAINS CURRENCY FOR THESE POSITIONS

Expanded Dispatch Recorder ([EDRC](#))

Incident Communications Center Manager ([INCM](#))

OTHER TRAINING WHICH SUPPORTS DEVELOPMENT OF KNOWLEDGE AND SKILLS

Expanded Dispatch Recorder (D-110)

Basic Firefighter Training:

Introduction to ICS (I-100)

Human Factors in the Wildland Fire Service (L-180)

Introduction to Wildland Fire Behavior (S-190)

Firefighting Training (S-130)

Initial Attack Dispatcher (IADP)

(Position Category: Incident Support)

REQUIRED TRAINING

Basic Firefighter Training:

Introduction to ICS (I-100)

Human Factors in the Wildland Fire Service (L-180)

Introduction to Wildland Fire Behavior (S-190)

Firefighting Training (S-130)

REQUIRED EXPERIENCE

Satisfactory performance as an Expanded Dispatch Recorder (EDRC)

+

Successful position performance as an Initial Attack Dispatcher (IADP)

PHYSICAL FITNESS LEVEL

None Required

THESE POSITIONS MAINTAIN CURRENCY FOR IADP

None

IADP MAINTAINS CURRENCY FOR THESE POSITIONS

Expanded Dispatch Recorder (EDRC)

Radio Operator (RADO)

OTHER TRAINING WHICH SUPPORTS DEVELOPMENT OF KNOWLEDGE AND SKILLS

Initial Attack Dispatcher (D-311)

Intermediate Wildland Fire Behavior (S-290)

Aircraft Dispatcher (ACDP)

(Position Category: Incident Support)

REQUIRED TRAINING

None

REQUIRED EXPERIENCE

Satisfactory performance as an Expanded Dispatch Recorder (EDRC)

+

Successful position performance as an Aircraft Dispatcher (ACDP)

PHYSICAL FITNESS LEVEL

None Required

THESE POSITIONS MAINTAIN CURRENCY FOR ACDP

Aircraft Base Radio Operator (ABRO)

Expanded Dispatch Recorder (EDRC)

ACDP MAINTAINS CURRENCY FOR THESE POSITIONS

Expanded Dispatch Recorder (EDRC)

OTHER TRAINING WHICH SUPPORTS DEVELOPMENT OF KNOWLEDGE AND SKILLS

Aircraft Dispatcher (D-312)

Expanded Dispatch Support Dispatcher (D-310)

Basic ICS (I-200)

Basic Air Operations (S-270)

Interagency Incident Business Management (S-260)

This page intentionally left blank.

DRAFT

QUALIFICATIONS FOR PREVENTION & INVESTIGATION POSITIONS

DRAFT

Fire Prevention Education Team Leader (PETL)

(Position Category: Associated Activities)

REQUIRED TRAINING

None

REQUIRED EXPERIENCE

Satisfactory performance as a Fire Prevention Education Team Member (PETM)

+

Successful position performance as a Fire Prevention Education Team Leader (PETL)

PHYSICAL FITNESS LEVEL

None Required

THESE POSITIONS MAINTAIN CURRENCY FOR PETL

Fire Prevention Team Member (PETM)

PETL MAINTAINS CURRENCY FOR THESE POSITIONS

Fire Prevention Team Member (PETM)

OTHER TRAINING WHICH SUPPORTS DEVELOPMENT OF KNOWLEDGE AND SKILLS

Basic ICS (I-200)

Fire Prevention Education Team Leader (P-410)

Fire Prevention Education 2 (P-301)

Fire Prevention Education Team Member (PETM)

(Position Category: Associated Activities)

REQUIRED TRAINING

None

REQUIRED EXPERIENCE

Successful position performance as a Fire Prevention Education Team Member (PETM)

PHYSICAL FITNESS LEVEL

None Required

THESE POSITIONS MAINTAIN CURRENCY FOR PETM

Fire Prevention Education Team Leader ([PETL](#))

PETM MAINTAINS CURRENCY FOR THESE POSITIONS

Fire Prevention Education Team Leader ([PETL](#))

OTHER TRAINING WHICH SUPPORTS DEVELOPMENT OF KNOWLEDGE AND SKILLS

Wildland Fire Observations and Origin Scene Protection for First Responders (FI-110)

Introduction to ICS (I-100)

Fire Prevention Education Team Member (P-310)

Introduction to Wildfire Prevention (P-101)

Introduction to Wildland Fire Behavior (S-190)

Firefighting Training (S-130)

Basic Wildland Fire Orientation (S-110)

Wildland Fire Investigation Team Member (INTM)

(Position Category: Associated Activities)

REQUIRED TRAINING

Wildland Fire Investigation Case Management (FI-310)

REQUIRED EXPERIENCE

Satisfactory performance as a Wildland Fire Investigator (INVF)

+

Successful position performance Wildland Fire Investigation Team Member (INTM)

PHYSICAL FITNESS LEVEL

Light

THESE POSITIONS MAINTAIN CURRENCY FOR INTM

None

INTM MAINTAINS CURRENCY FOR THESE POSITIONS

None

OTHER TRAINING WHICH SUPPORTS DEVELOPMENT OF KNOWLEDGE AND SKILLS

Intermediate ICS (I-300)

Intermediate Wildland Fire Behavior (S-290)

Wildland Fire Investigation: Civil Case Management (FI-311)

Interviewing and Interrogation Training

Wildland Fire Investigator (INVF)

(Position Category: Associated Activities)

REQUIRED TRAINING

Wildfire Origin and Cause Determination (FI-210)

REQUIRED EXPERIENCE

Successful position performance as a Wildland Fire Investigator (INVF)

PHYSICAL FITNESS LEVEL

Light

THESE POSITIONS MAINTAIN CURRENCY FOR INVF

None

INVF MAINTAINS CURRENCY FOR THESE POSITIONS

None

OTHER TRAINING WHICH SUPPORTS DEVELOPMENT OF KNOWLEDGE AND SKILLS

Wildland Fire Observations and Origin Scene Protection for First Responders (FI-110)

Basic ICS (I-200)

Introduction to Wildland Fire Behavior (S-190)

This page intentionally left blank.

DRAFT

POSITION QUALIFICATION FLOW CHARTS

These charts *are not* Incident Command System chain of command organization charts.

These charts show the progression from one position to another within the qualification system. For more information on a position, refer to the individual Qualification Page.

Each box within the charts contains information pertaining to Required Experience (Qualified As), Required Training, and Physical Fitness Level.

| |
|--|
| <p>Planning Section Chief Type 2</p> <p>(PSC2)</p> |
| <p>Qualified As: SITL + RESL</p> <p>Required Training: S-420</p> <p>PHYS: N</p> |

Job title

Position Code

**Required Experience qualification referenced by
Position Code**

**Required Training course(s) for qualification in
this position (does not show Annual Fireline Safety
Refresher Training, which is referenced on
individual Qualification Pages)**

Required level of physical fitness:

A = Arduous

M = Moderate

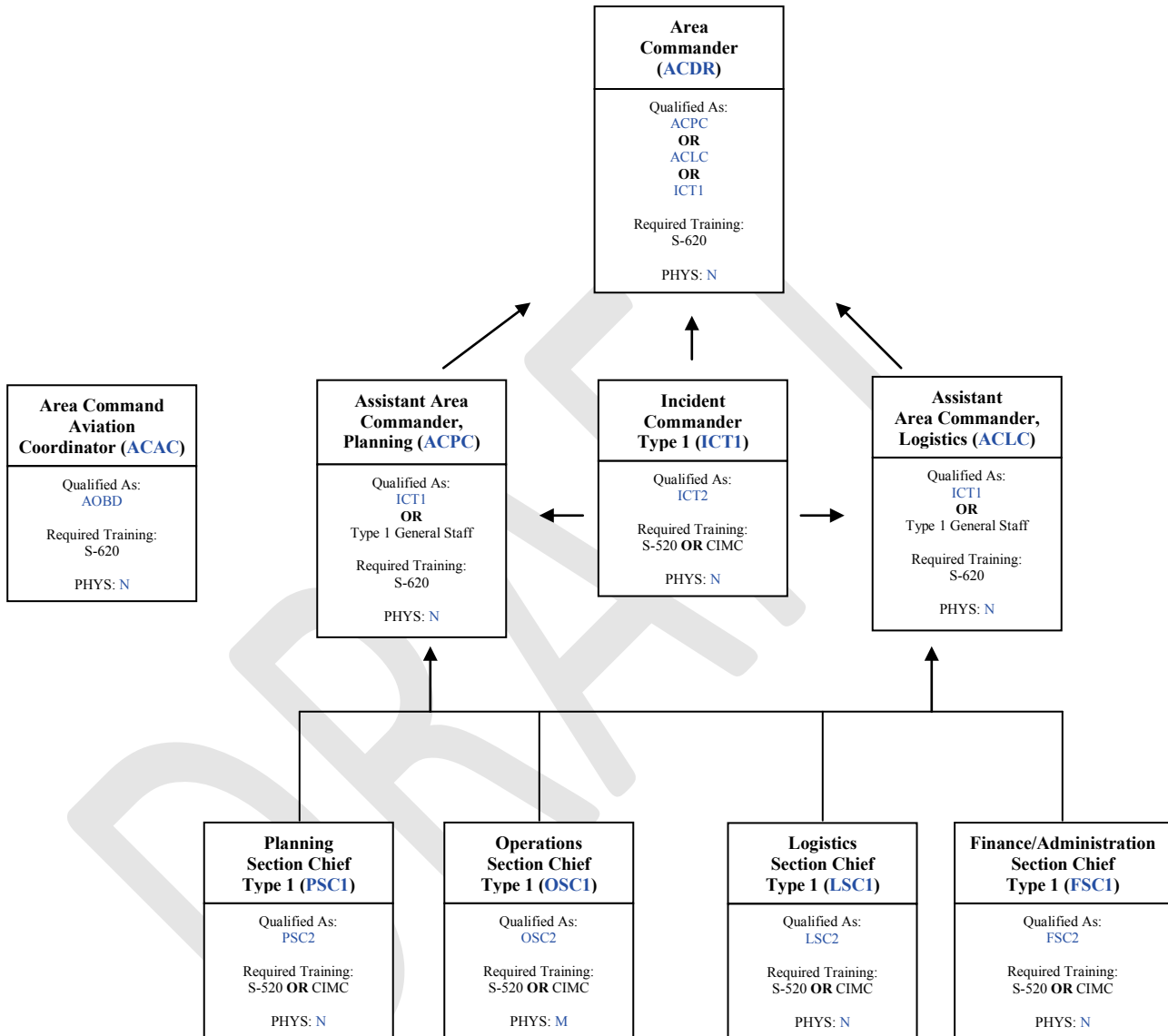
L = Light

N = None Required

AREA COMMAND

June 2011

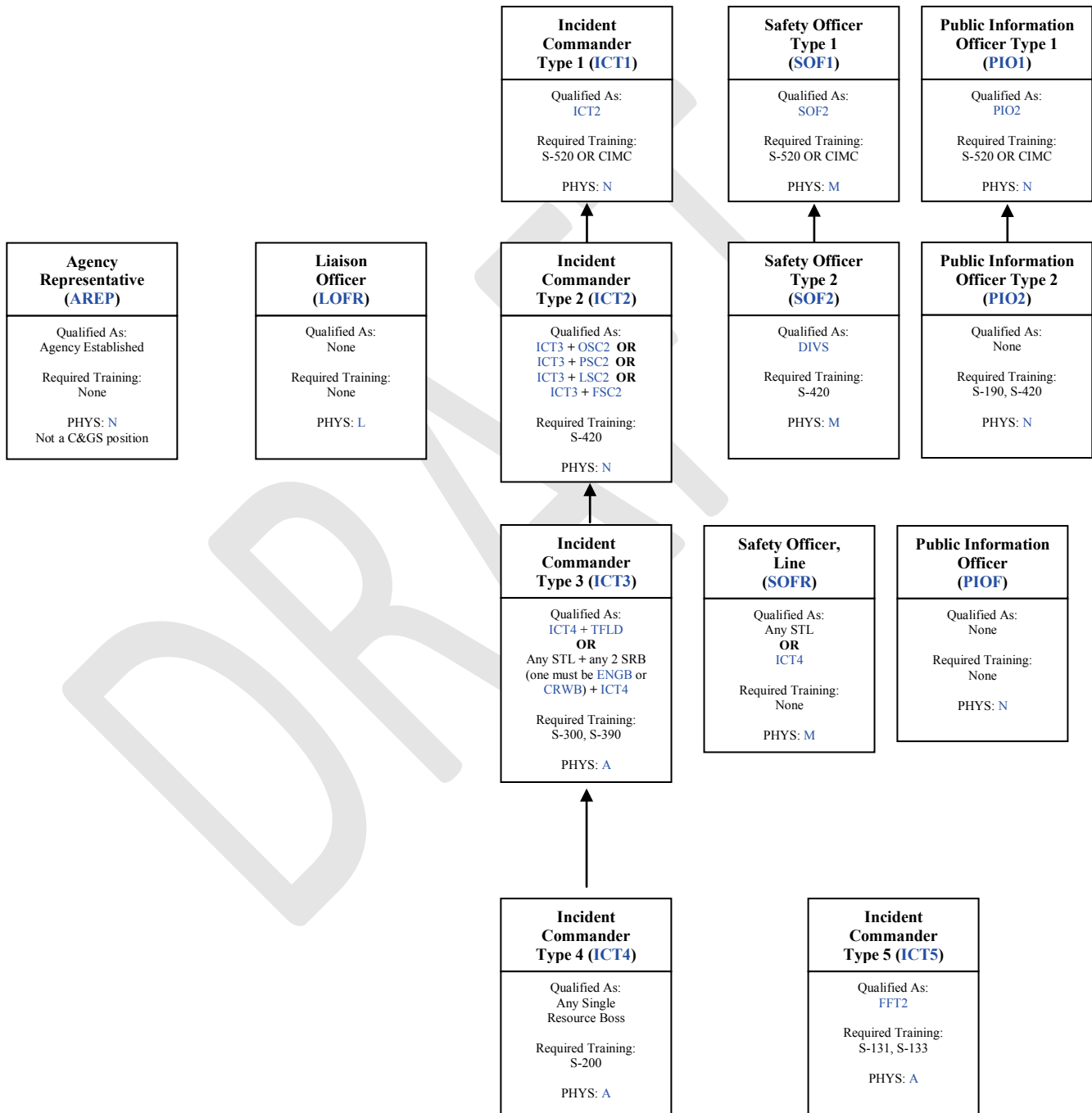
This is not an ICS chain of command organization chart



COMMAND & GENERAL STAFF

June 2011

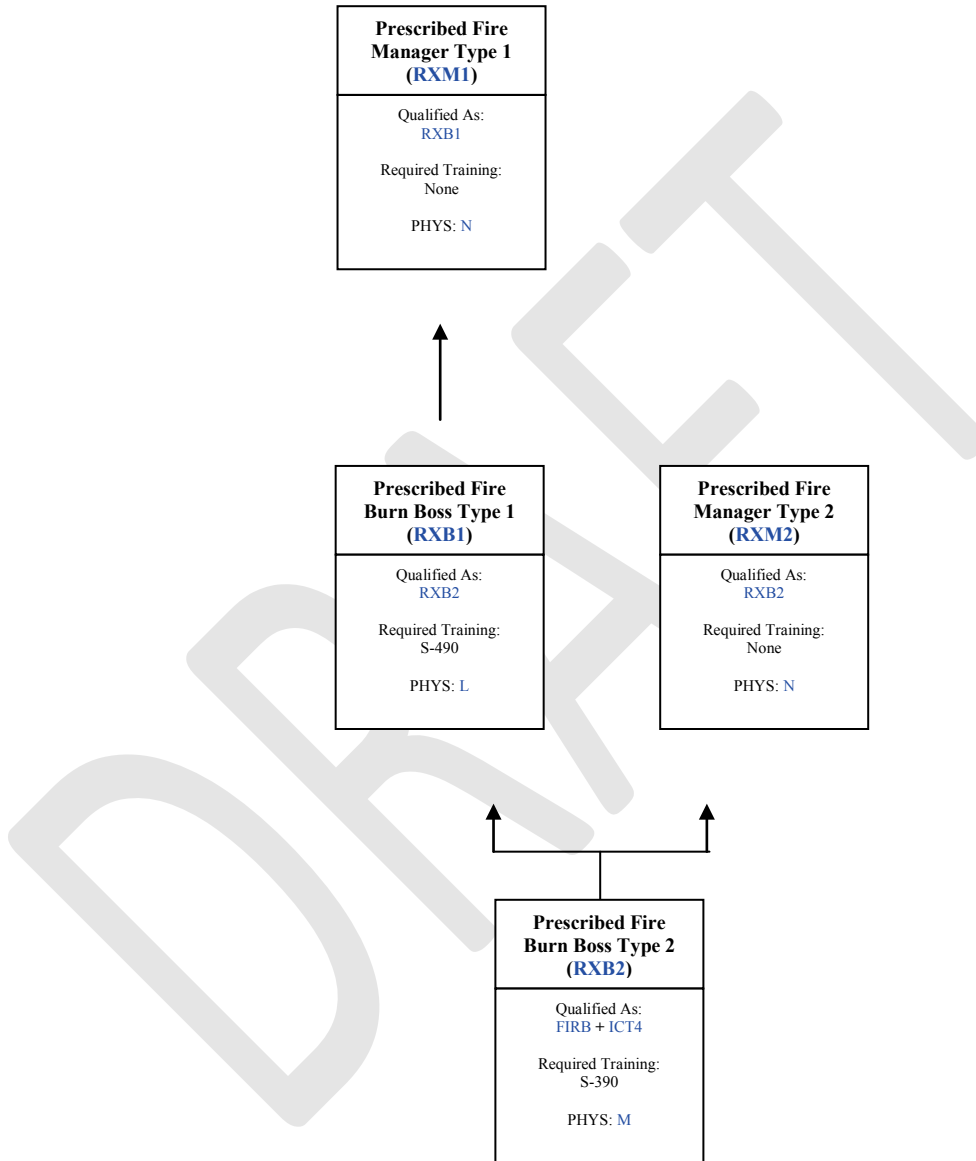
This is not an ICS chain of command organization chart



PRESCRIBED FIRE

June 2011

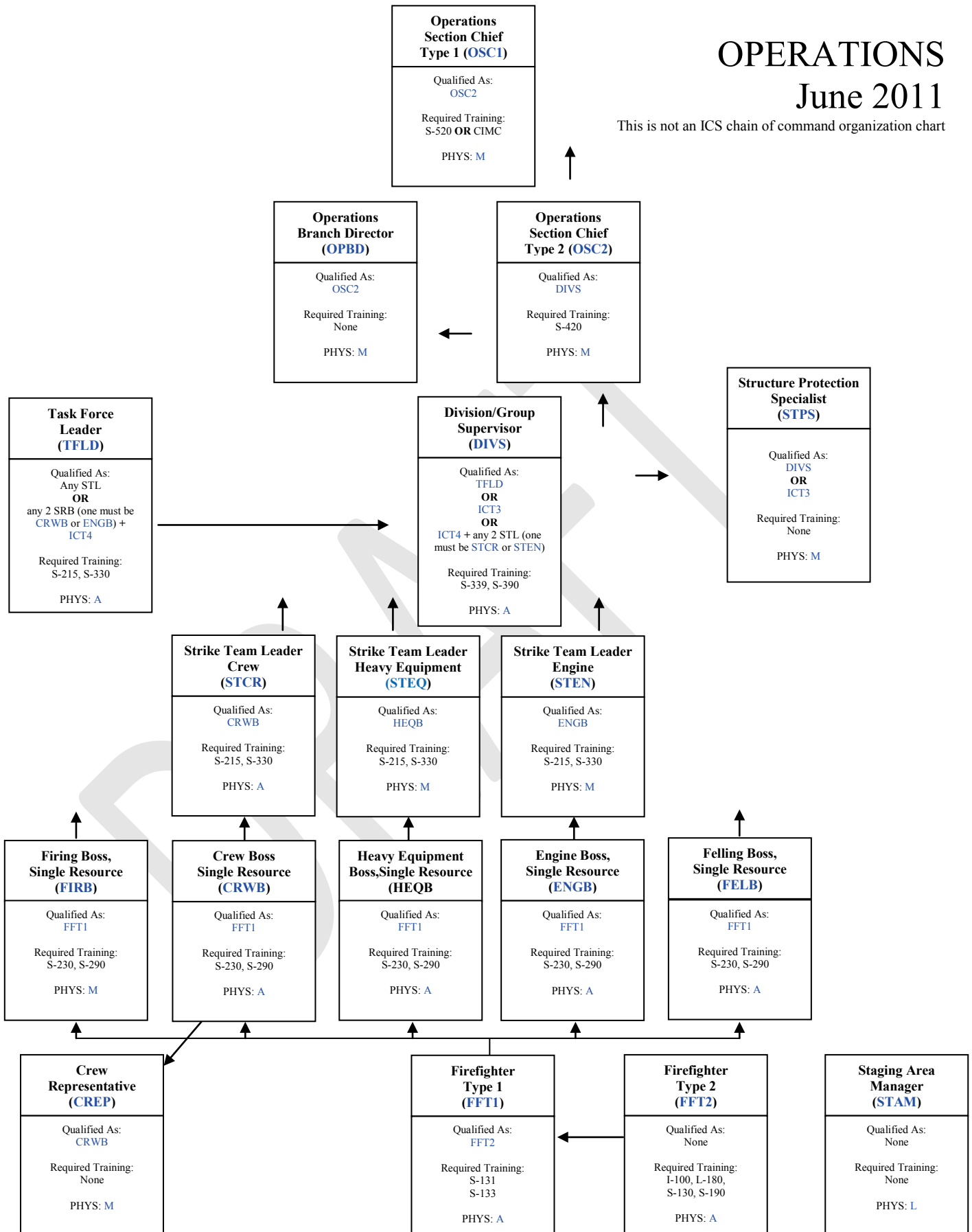
This is not an ICS chain of command organization chart



OPERATIONS

June 2011

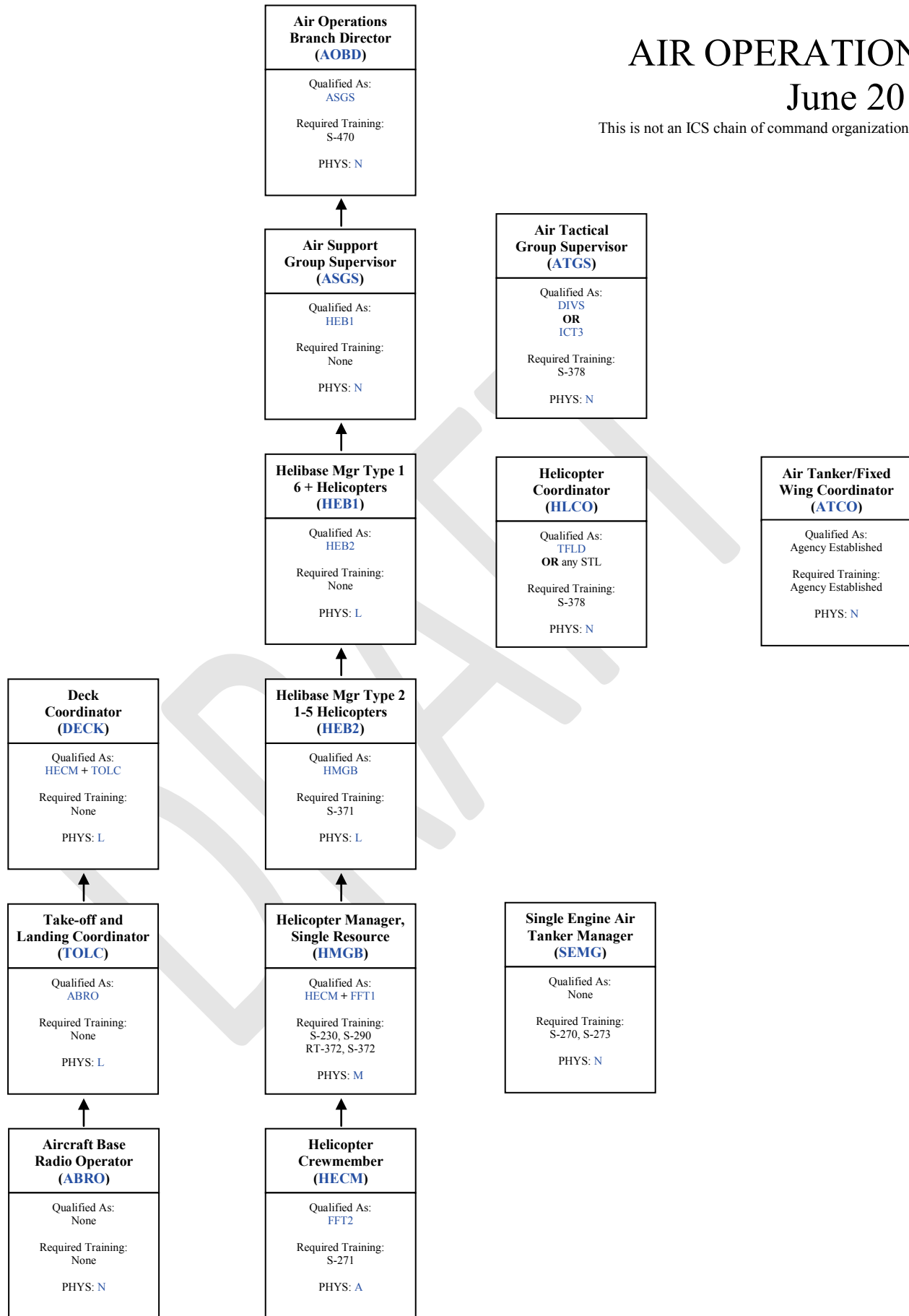
This is not an ICS chain of command organization chart



AIR OPERATIONS

June 2011

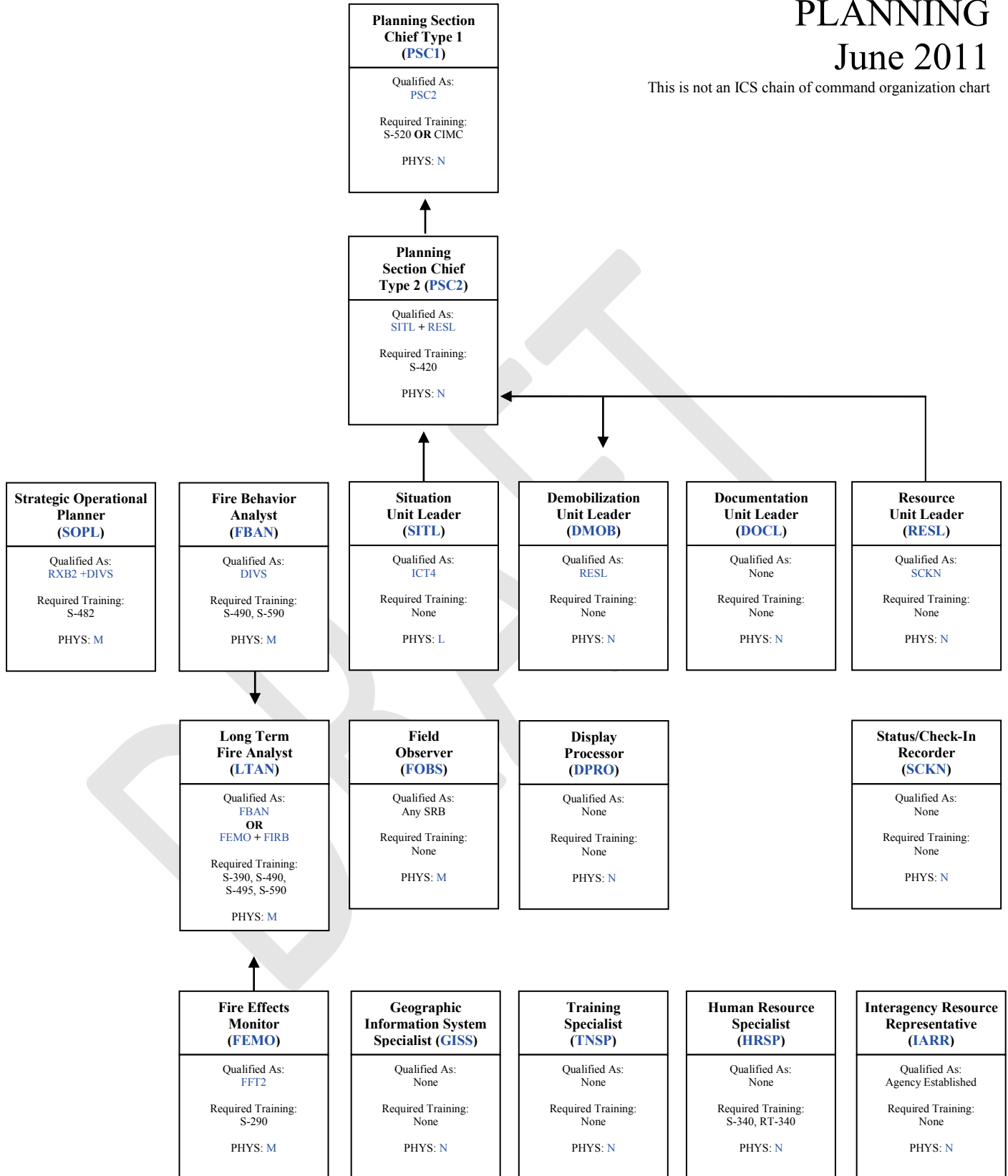
This is not an ICS chain of command organization chart



PLANNING

June 2011

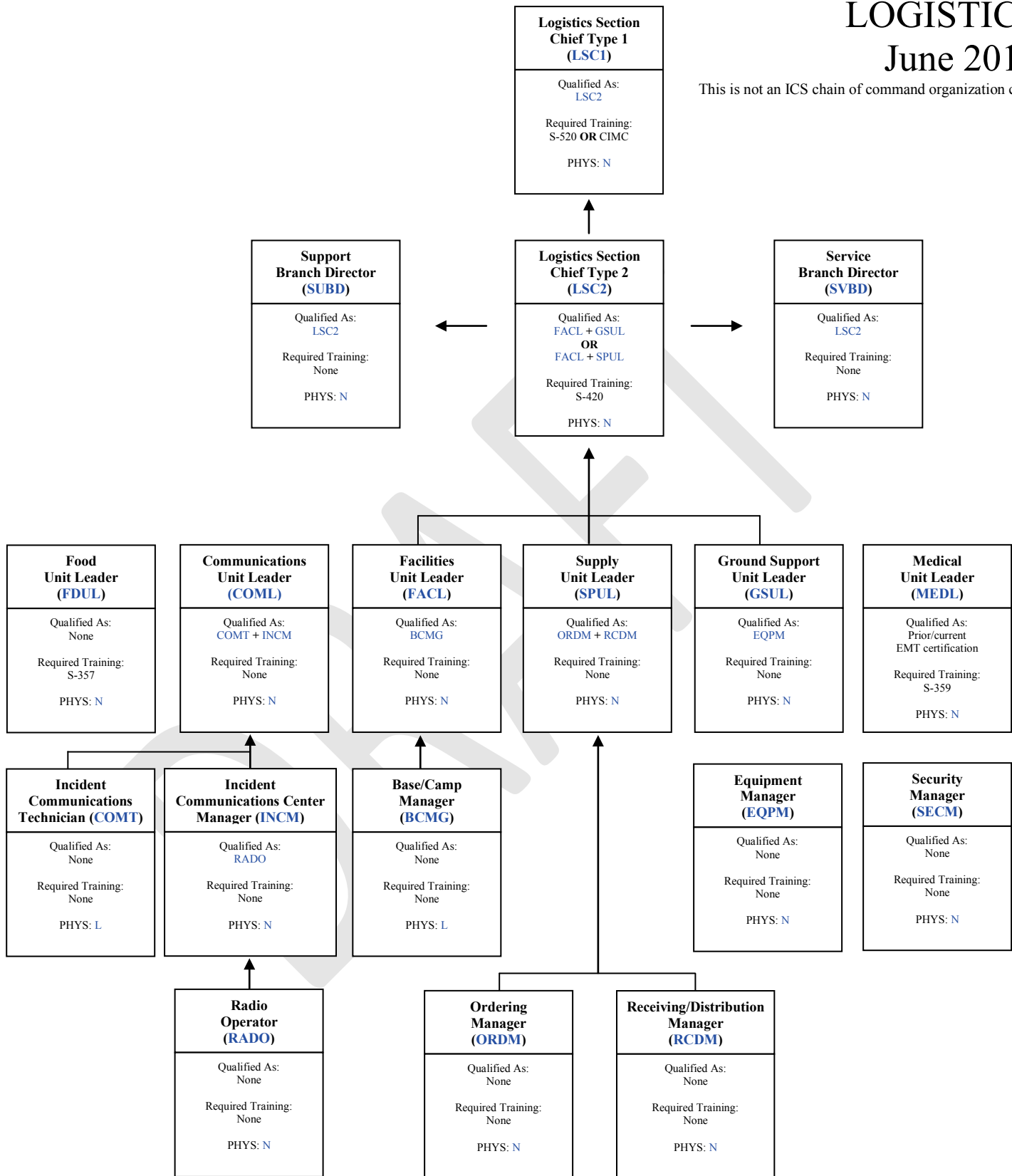
This is not an ICS chain of command organization chart



LOGISTICS

June 2011

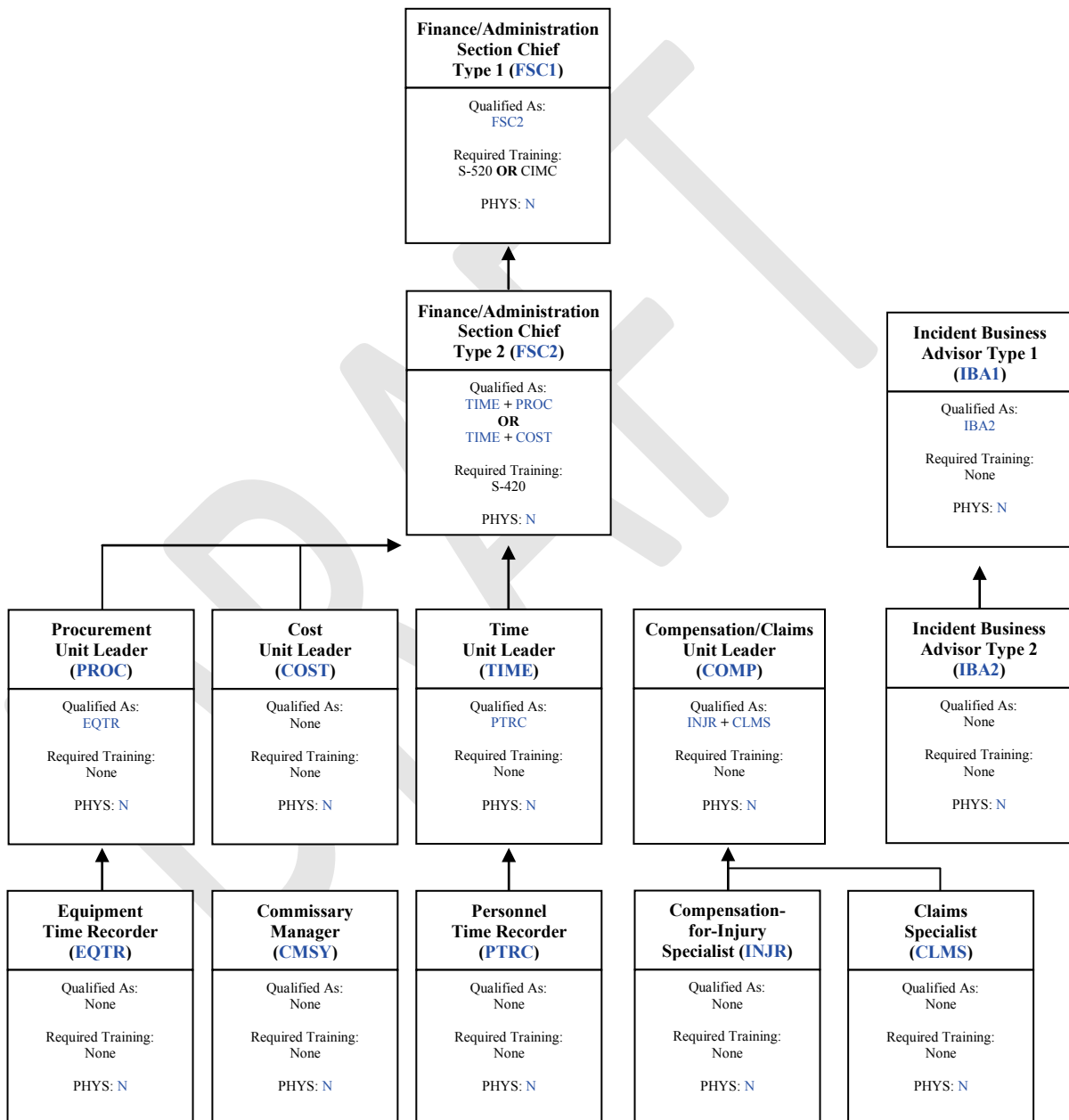
This is not an ICS chain of command organization chart



FINANCE & ADMINISTRATION

June 2011

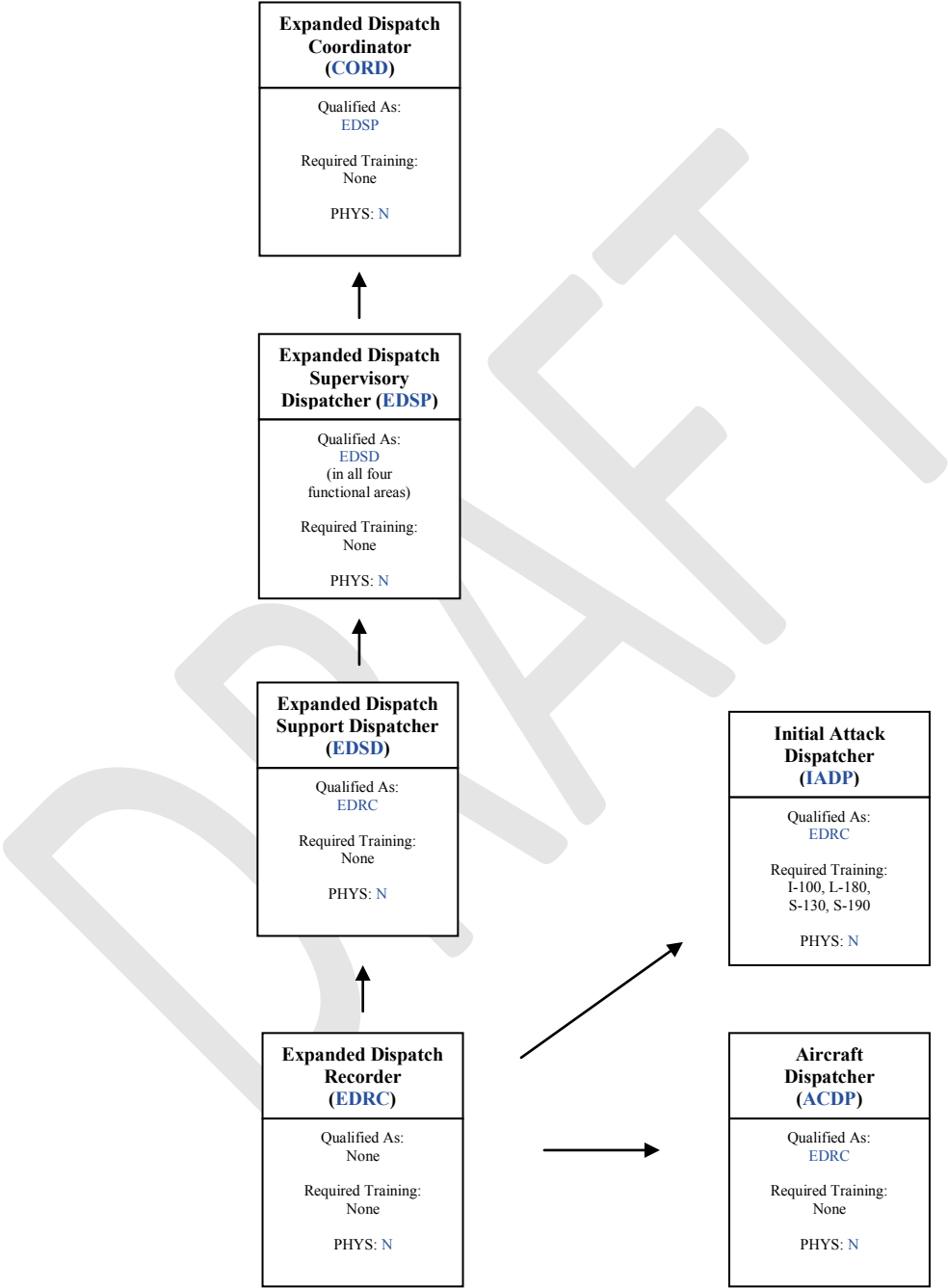
This is not an ICS chain of command organization chart



DISPATCH

June 2011

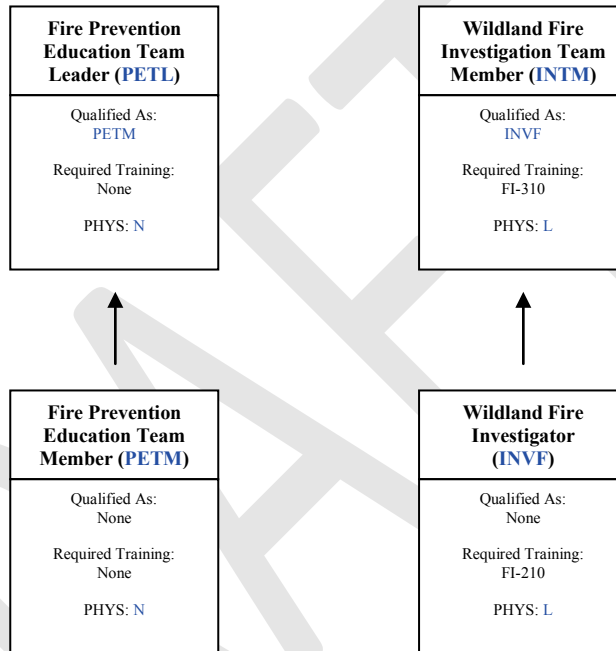
This is not an ICS chain of command organization chart



PREVENTION & INVESTIGATION

June 2011

This is not an ICS chain of command organization chart



This page intentionally left blank.

DRAFT