

Event Geodatabase- GISS workflow

How-To

Layouts, Legend, and Labeling Tips

Description

This document will serve as the third of three how-to/step by step guides for the Event GDB GISS workflow. Although the entire workflow is not always a linear path, the how-to documents cover the path from creating the master map document and creating the incident geodatabase from the NWCG Wildland Fire Event Geodatabase model (disconnected) to editing and map creation.

This document highlights working with layout template and legend and labeling tips.

Target Audience

GIS Specialists

Objectives

Demonstrate implementation of layout templates and legend configuration. Give tips on labeling.

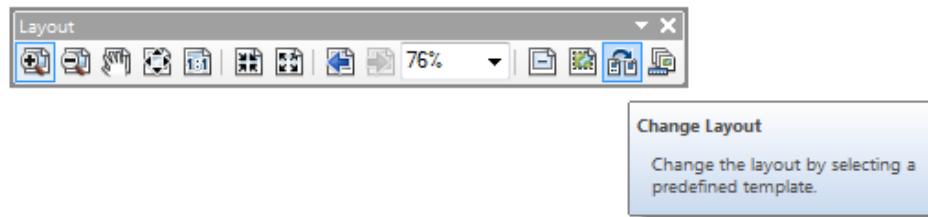
GSTOP Reference

Chapter 5: Map Symbolology, Chapter 6: Map Products

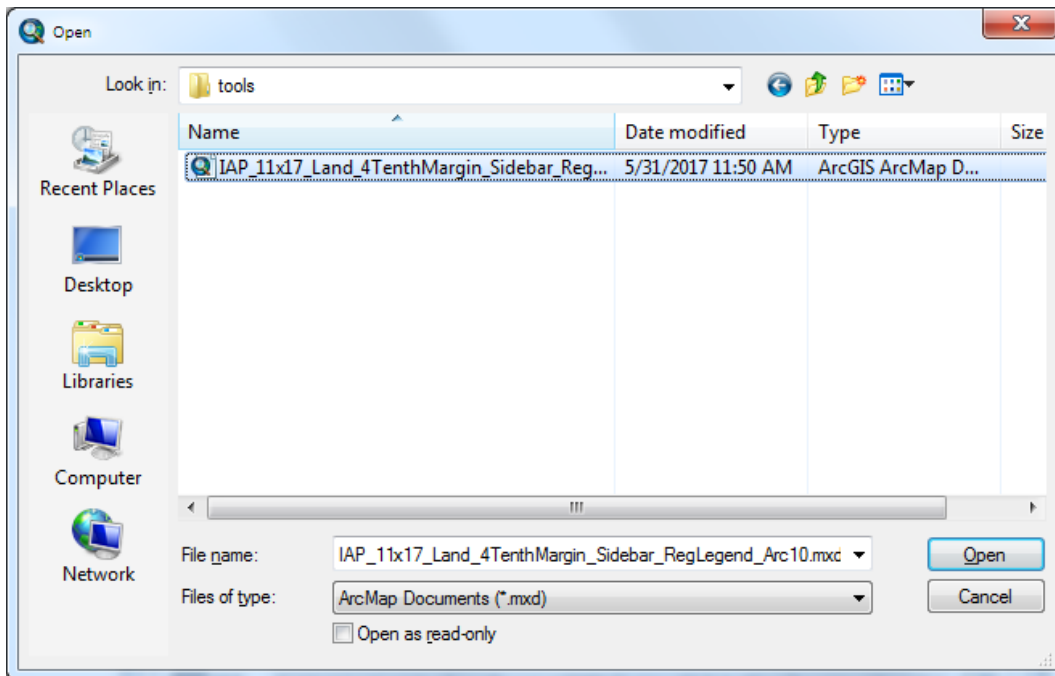
Apply a Template Layout

Using an existing map template may save you time when creating your map. For example, there are map templates available for download on the Geospatial Subcommittee web page at, <https://www.nwcg.gov/committees/geospatial-subcommittee/resources/tools/giss-map-layout-templates>

1. On the Layout toolbar, click on the Change Layout button.



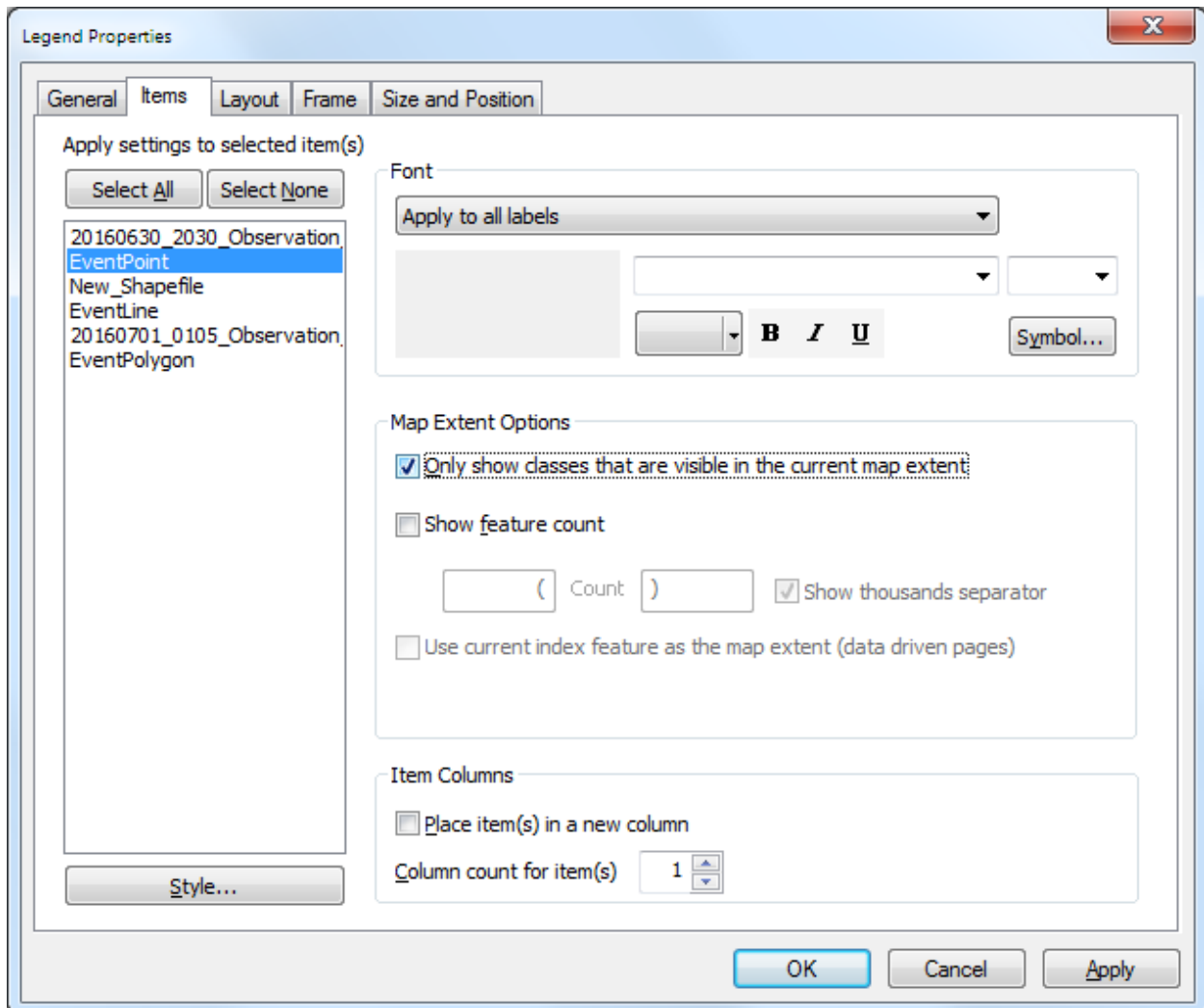
2. In the Select Template window, click on the folder icon to browse to the location of the template.
3. Navigate to the template, select it and click Open.



4. If you have more than one data frame in your map you may need to order your data frames appropriately in the Data Frame Order window.
5. Click Finish.
6. The template layout should now be applied to your map.

Restrict legend items to only show features in current map extent

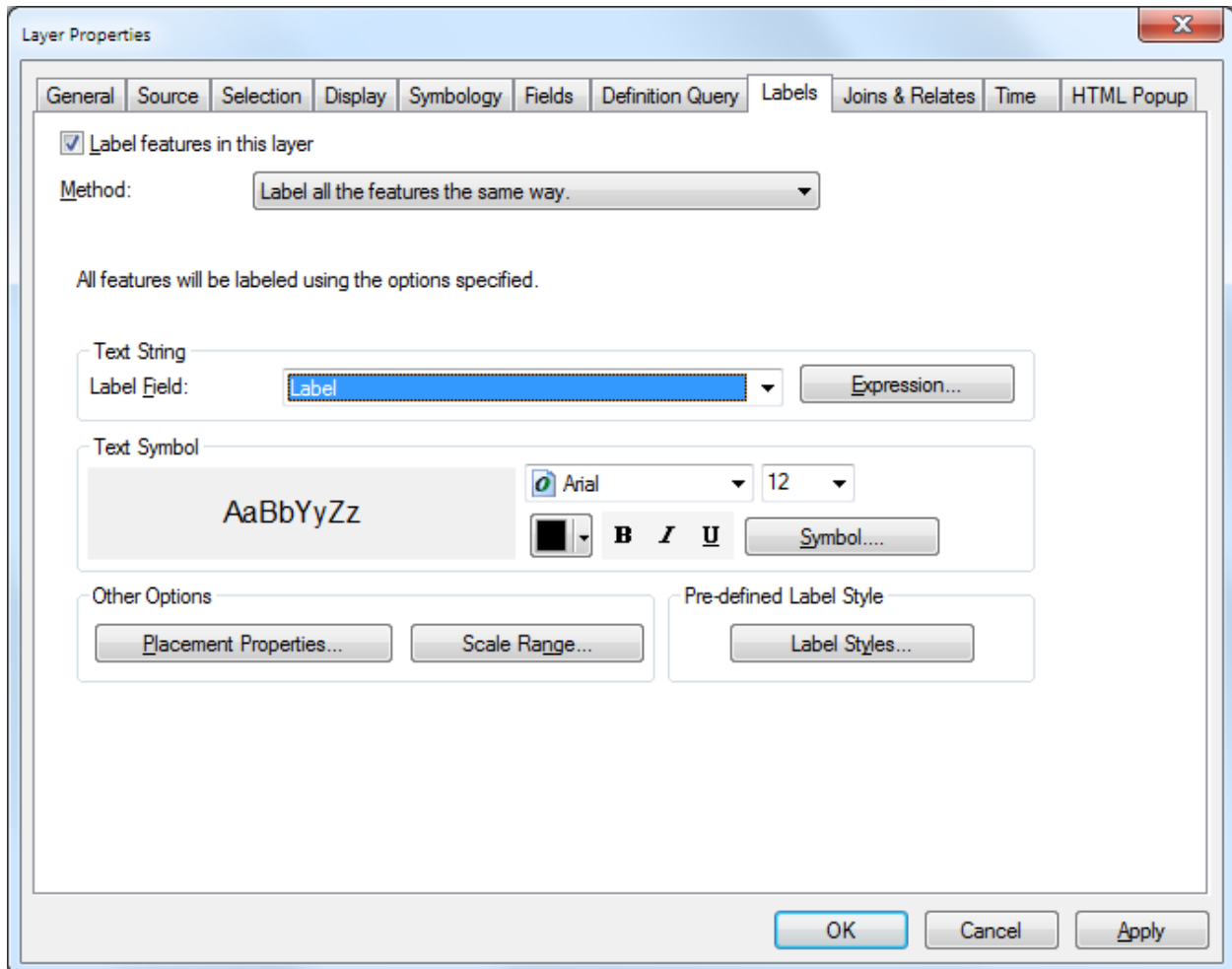
1. Bring up the Legend Properties dialog box, by double clicking on the legend.
2. Go to the Items tab
3. Click on the appropriate feature class.
4. Under Map Extent Options, check the box in front of “Only show classes that are visible in the current map extent.”



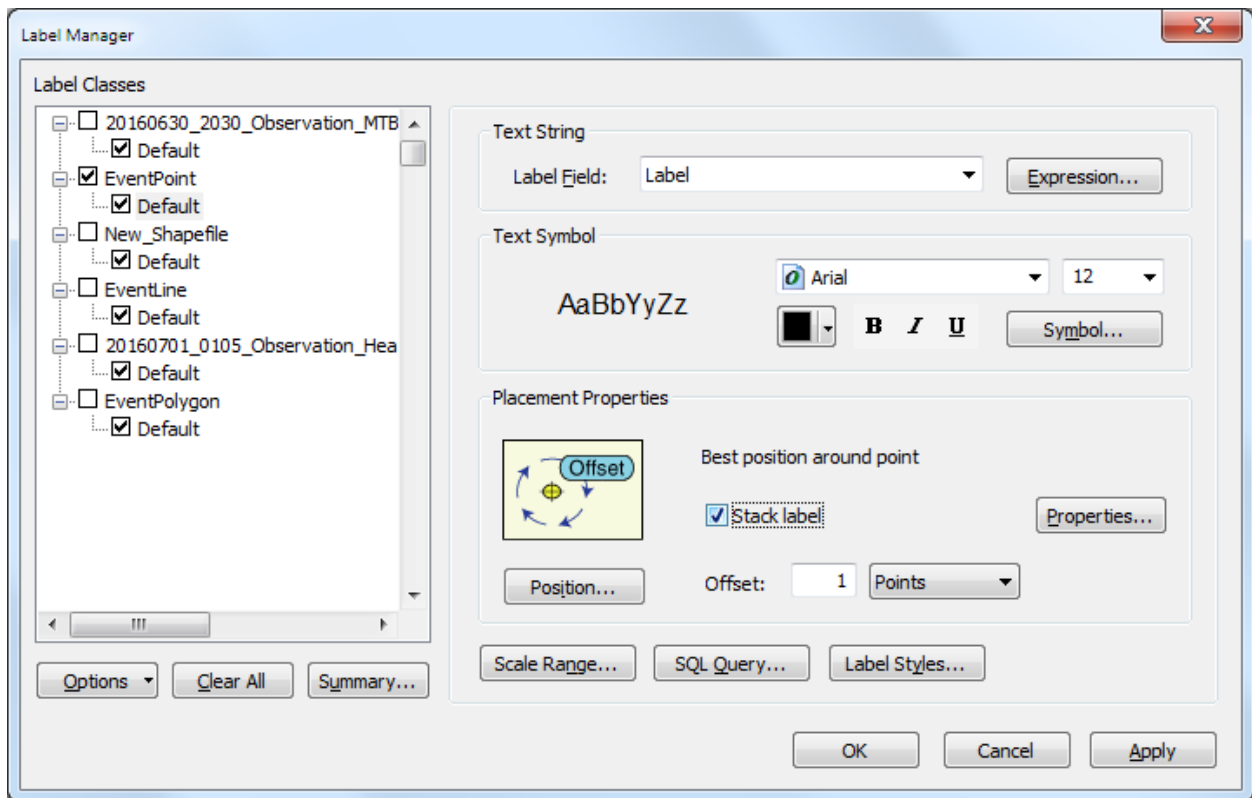
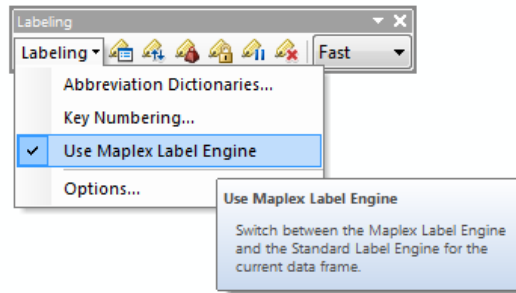
Labeling of features

Keep labeling simple.

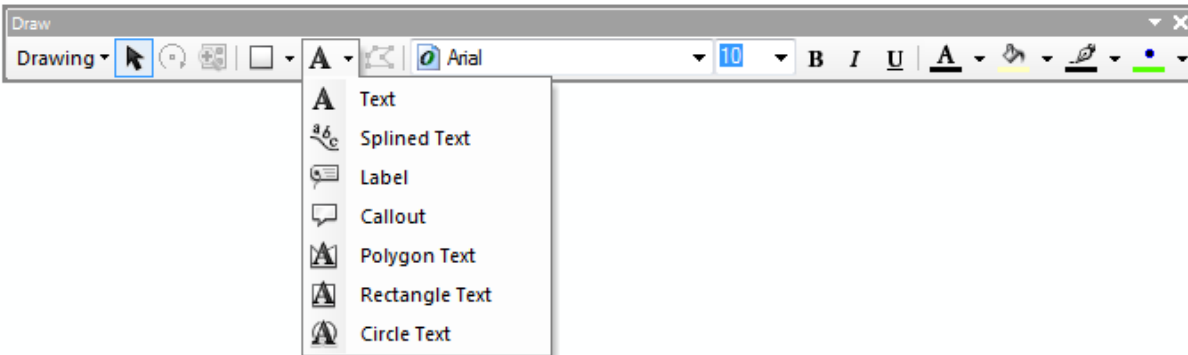
Labels can be added using the Labels tab in the Layer Properties dialog.



Alternatively labels can be added using Maplex and placed with greater automated control using the buttons on the Labeling toolbar.



Text can also be added manually to the Data View or the Layout View using options on the Draw toolbar.

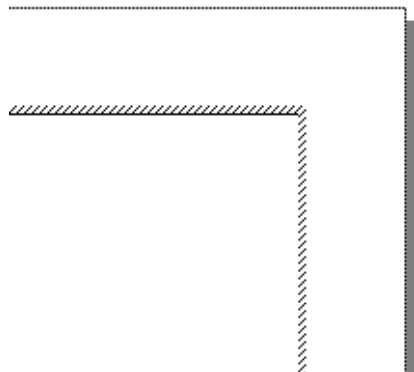


Labeling in the Data View

WARNING: Using this method can be challenging to manage and keep up to date. Consider using an annotation feature class.

Labels that are tied to a place on the ground and change location relative to the page when the map is panned, need to be placed while in Data View or in

Layout View using the Focus Data Frame button on the Layout toolbar. In Focus Data Frame mode there will be slashes around the perimeter of your page.



Labeling in the Layout View

Labels placed while in Layout View will retain their placement on the page and will not change location on the page when the map is panned or zoomed and therefore should not be used to label features on the ground.