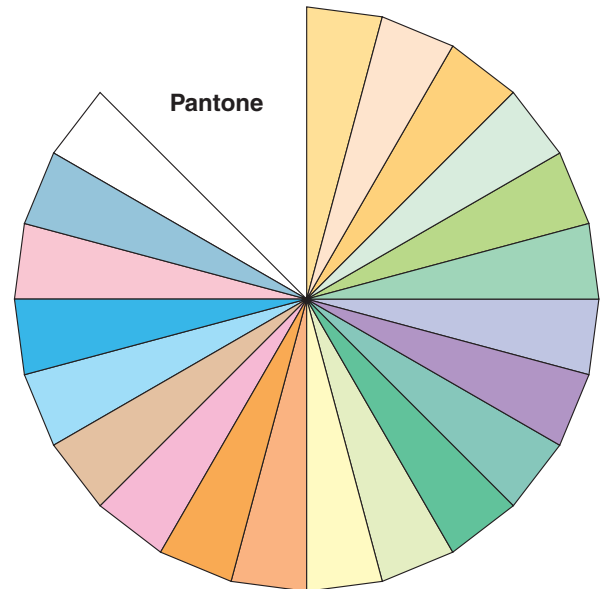
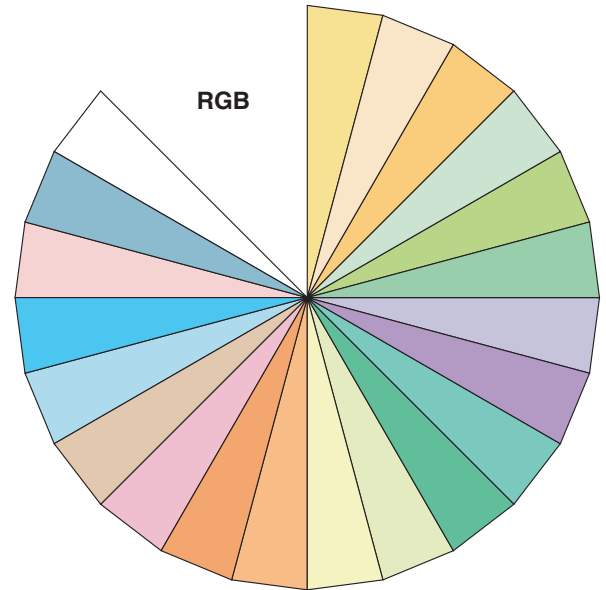
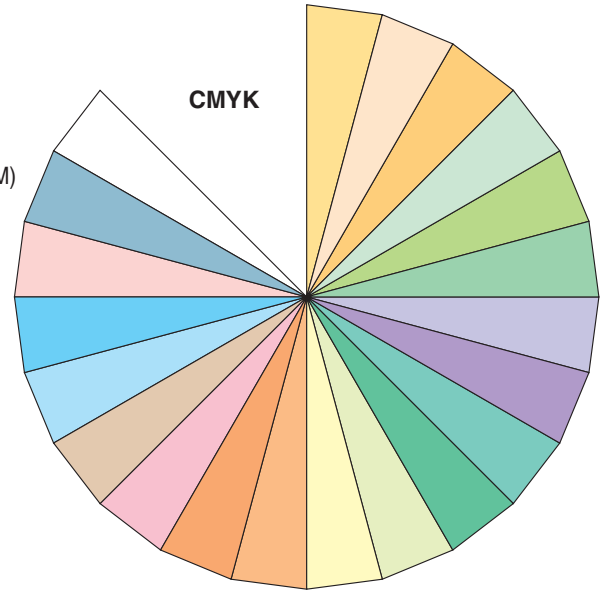


H-1553-PUBLICATION STANDARDS MANUAL HANDBOOK

Map Ownership Matrix

CMYK	RGB (ArcView HSV)	Pantone	
0-10-50-0	254-230-121 (34-134-254)	141C	Bureau of Land Management (BLM)
0-10-20-0	254-230-191 (26-64-254)	475C	BLM Oregon and California Lands (O&C)
0-20-60-0	254-204-92 (29-163-254)	135C	BLM Wilderness Area
20-0-20-0	204-235-197 (77-41-235)	351C	US Forest Service (USFS)
30-0-60-0	179-222-105 (58-134-222)	367C	USFS O&C
40-0-40-0	153-213-148 (82-78-213)	345C	USFS Wilderness Area
20-20-0-0	202-189-220 (188-36-220)	665C	National Park Service (NPS)
30-40-0-0	177-137-193 (201-74-193)	2563C	NPS Wilderness Area
50-0-30-0	127-204-167 (107-96-204)	563C	US Fish and Wildlife (USFW) National Wildlife Refuge
60-0-50-0	102-191-127 (97-119-191)	346C	USFW Wilderness Area
10-0-30-0	230-245-177 (52-71-245)	365C	National Grasslands
0-0-30-0	255-255-179 (42-76-255)	601C	Bureau of Reclamation
0-30-50-0	253-180-108 (21-146-253)	472C	Indian Reservation (IR)
0-40-60-0	253-154-82 (17-173-253)	157C	IR Wilderness Area
0-30-5-0	251-180-206 (240-72-251)	203C	Military Reservations and Corps of Engineers
10-20-30-0	228-196-159 (22-77-228)	4665C	Other Federal
30-0-0-0	179-227-238 (135-63-238)	2975C	State
50-0-0-0	107-207-226 (134-134-226)	2915C	State Wilderness Area
0-20-10-0	252-205-207 (254-47-252)	196C	Bankhead-Jones Land Use Lands
30-0-0-20	143-181-190 (136-63-190)	551C	State, County, City; Wildlife, Park and Outdoor Recreation Areas
0-0-0-0	255-255-255 (0-0-255)		Private



Colors on a printed product may differ from the colors shown above; colors may be affected by any combination of variables inherent to four-color process printing. These variables include, but are not limited to, film and plate registration, plate quality, type and weight of paper stock, different types of process color ink, printing press dot gain, print run color sequence, press color control, and pressmanship.