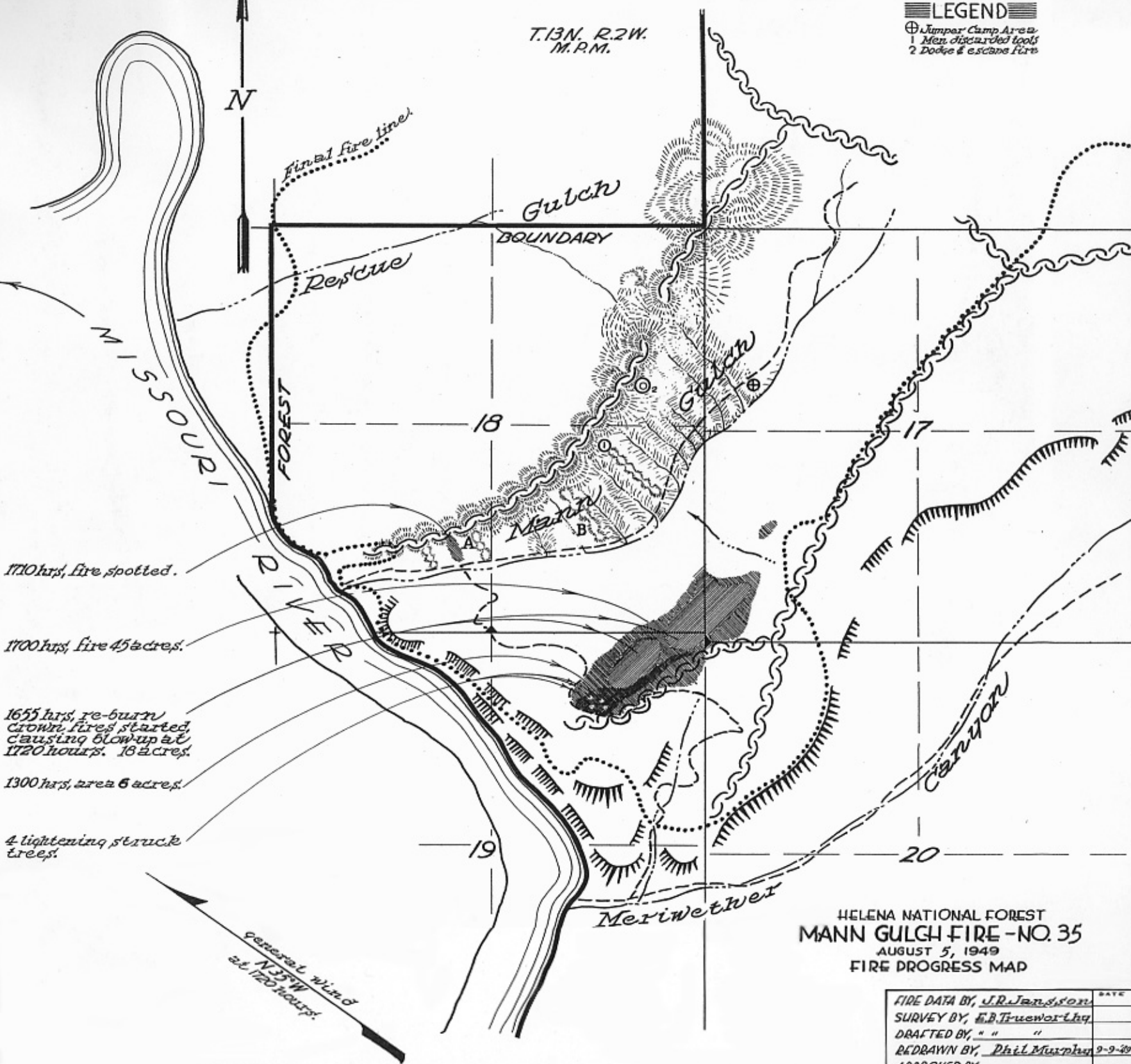


T.13N. R.2W.
M.P.M.

LEGEND
⊕ Jumper Camp Area
1 Max. discarded tools
2 Dodge & escape fire



1710 hrs, fire spotted.

1700 hrs, fire 45 acres.

1655 hrs, re-burn
crown fires started,
causing blowup at
1720 hours. 18 acres.

1300 hrs, area 6 acres.

4 lightning struck
trees.

general wind
at 1720 hours
from N
at 1725 hrs
from NW

HELENA NATIONAL FOREST
MANN GULCH FIRE - NO. 35
AUGUST 5, 1949
FIRE PROGRESS MAP

FIRE DATA BY, J.R. Janson	DATE
SURVEY BY, E.B. Truener	
DRAFTED BY, " "	
REDRAWN BY, Phil Murphy	9-9-59
APPROVED BY,	